

## 2. People

### 2.1 Population

Figure 1 shows that Hutt City is the ninth largest territorial authority in the country. This is unchanged from the last Census.

Figure 1: Ten Largest Territorial Authorities ranked by the 2001 Usually Resident Population

		Usually Resident Population	Increase or Decrease (-) 1996 - 2001	
			Number	Percent
1	Auckland City	367,734	21,966	6.4%
2	Christchurch City	316,227	7,200	2.3%
3	Manukau City	283,197	28,923	11.4%
4	North Shore City	184,821	12,657	7.4%
5	Waitakere City	168,750	13,185	8.5%
6	Wellington City	163,824	6,105	3.9%
7	Hamilton City	114,921	6,495	6.0%
8	Dunedin City	114,342	-3,801	-3.2%
<b>9</b>	<b>Lower Hutt City</b>	<b>95,478</b>	<b>-393</b>	<b>-0.4%</b>
10	Tauranga District	90,906	13,128	16.9%

### 2.2 Population Change

Hutt City experienced a population decrease of 393 (-0.4%) between 1996 and 2001. New Zealand's population grew by 3.3% over this period. Kapiti Coast District, Wellington City, and Porirua City all experienced growth over this period.

Over the period 1991-2001, the population of Hutt City grew by 594. Hutt City's population can be described as fairly static.

Figures 2 and 4 show that within Hutt City there are considerable differences between the individual area units. The area units Belmont, Avalon West, Taita North, and Haywards-Manor Park have all experienced significant growth. Haywards-Manors Park experienced a growth rate of 46% (a population increase of 117).

All of the area units in Wainuiomata experienced a population decline between 1991-2001. This is contrary to the general trend in Hutt City. Many of the area units that experienced a decline between 1996-2001 still had an increase in population over the last ten years, as shown in Figure 4.

Figure 3 shows both the change in the population and the number of occupied dwellings between 1996-2001. Many of the area units that are experiencing either no change or a decline in population are experiencing an increase in the number of occupied dwellings (see Figure 36). This indicates that the size of households is decreasing.

Note that in Figure 3 both the increase in occupied dwellings for Hutt City and the decrease in population for Wainuiomata go off the scale of the graph. The actual value for each of these has been added to the graph.

2.2 Population Change

Figure 2: Population Change in the Usually Resident Population between 1996-2001

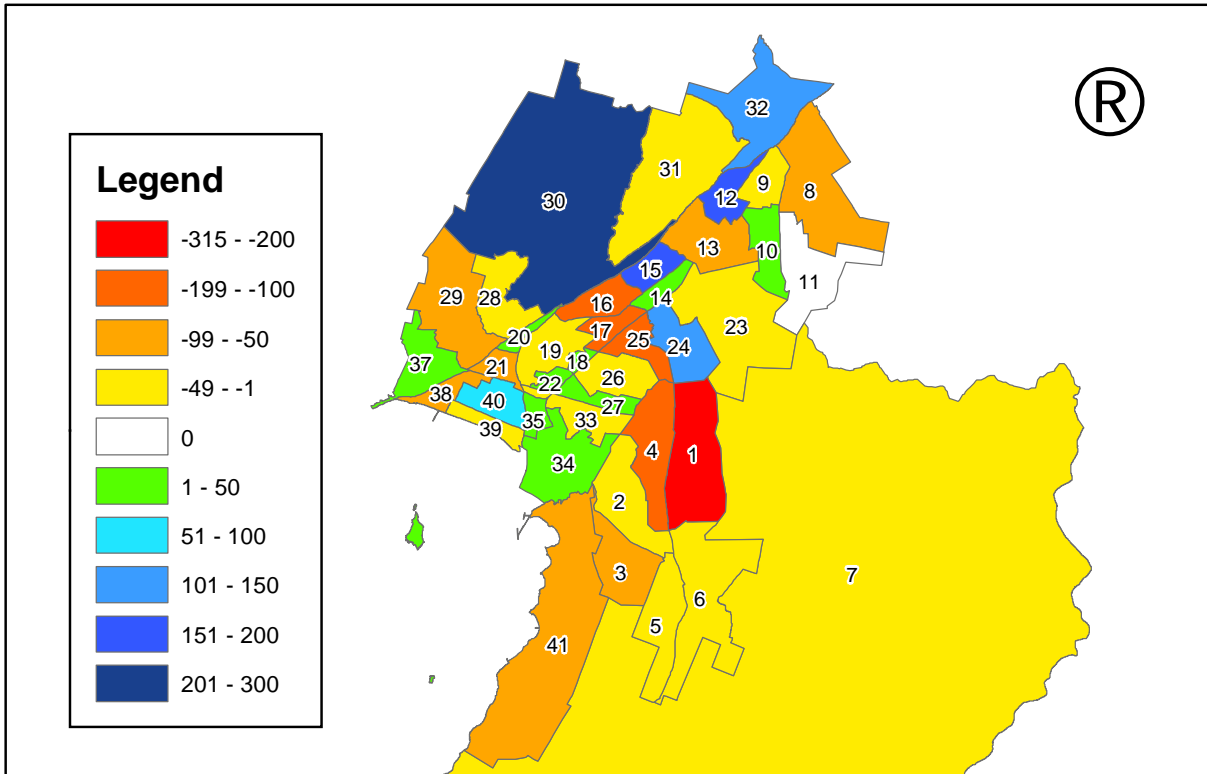


Figure 3: Change in Population and Occupied Dwellings 1996-2001

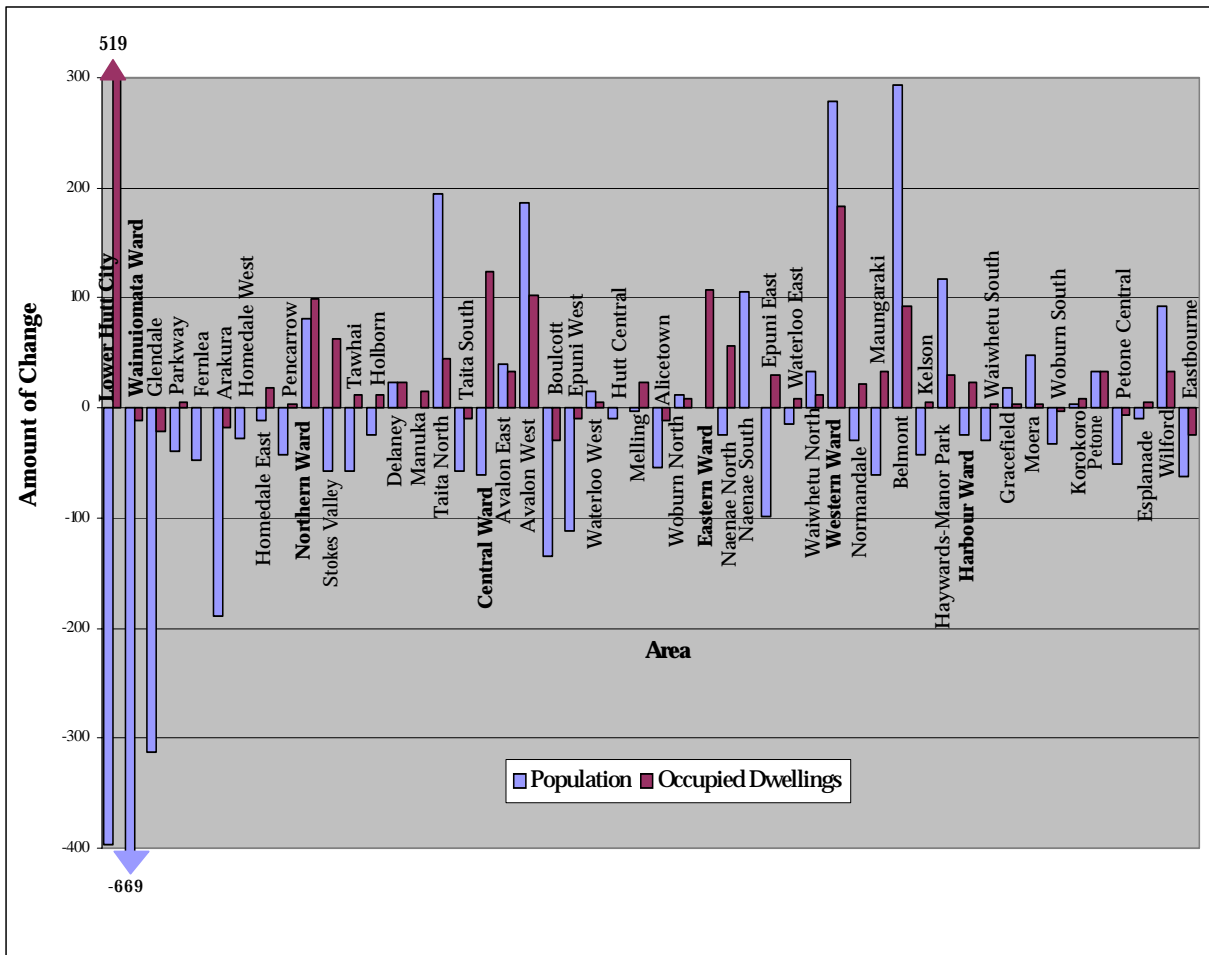


Figure 4: Population Change in Usually Resident Population

	2001	1996	1991	Change 1996-2001		Change 1991-2001	
				Number	Percent	Number	Percent
<b>Lower Hutt City</b>	<b>95,475</b>	<b>95,871</b>	<b>94,881</b>	<b>-396</b>	<b>-0.4%</b>	<b>594</b>	<b>0.6%</b>
<b>Wainuiomata Ward</b>	<b>17,058</b>	<b>17,727</b>	<b>18,417</b>	<b>-669</b>	<b>-3.8%</b>	<b>-1,359</b>	<b>-7.4%</b>
1. Glendale	3,525	3,837	3,897	-312	-8.1%	-372	-9.5%
2. Parkway	2,991	3,030	3,198	-39	-1.3%	-207	-6.5%
3. Fernlea	1,998	2,046	2,133	-48	-2.3%	-135	-6.3%
4. Arakura	2,526	2,715	2,763	-189	-7.0%	-237	-8.6%
5. Homedale West	2,484	2,511	2,667	-27	-1.1%	-183	-6.9%
6. Homedale East	3,081	3,093	3,258	-12	-0.4%	-177	-5.4%
7. Pencarrow	453	495	501	-42	-8.5%	-48	-9.6%
<b>Northern Ward</b>	<b>14,805</b>	<b>14,724</b>	<b>14,838</b>	<b>81</b>	<b>0.6%</b>	<b>-33</b>	<b>-0.2%</b>
<i>Stokes Valley</i>	<i>9,198</i>	<i>9,255</i>	<i>9,291</i>	<i>-57</i>	<i>-0.6%</i>	<i>-93</i>	<i>-1.0%</i>
8. Tawhai	3,147	3,204	2,991	-57	-1.8%	156	5.2%
9. Holborn	2,034	2,058	2,151	-24	-1.2%	-117	-5.4%
10. Delaney	2,340	2,316	2,427	24	1.0%	-87	-3.6%
11. Manuka	1,677	1,677	1,722	0	0.0%	-45	-2.6%
12. Taita North	2,856	2,661	2,811	195	7.3%	45	1.6%
13. Taita South	2,751	2,808	2,736	-57	-2.0%	15	0.5%
<b>Central Ward</b>	<b>18,141</b>	<b>18,201</b>	<b>17,502</b>	<b>-60</b>	<b>-0.3%</b>	<b>639</b>	<b>3.7%</b>
14. Avalon East	2,238	2,199	2,031	39	1.8%	207	10.2%
15. Avalon West	2,298	2,112	2,154	186	8.8%	144	6.7%
16. Boulcott	2,421	2,556	2,433	-135	-5.3%	-12	-0.5%
17. Epunu West	2,940	3,051	2,874	-111	-3.6%	66	2.3%
18. Waterloo West	924	909	909	15	1.7%	15	1.7%
19. Hutt Central	3,606	3,615	3,504	-9	-0.2%	102	2.9%
20. Melling	534	537	519	-3	-0.6%	15	2.9%
21. Alicetown	1,869	1,923	1,863	-54	-2.8%	6	0.3%
22. Woburn North	1,311	1,299	1,215	12	0.9%	96	7.9%
<b>Eastern Ward</b>	<b>16,479</b>	<b>16,479</b>	<b>16,257</b>	<b>0</b>	<b>0.0%</b>	<b>222</b>	<b>1.4%</b>
23. Naenae North	4,440	4,464	4,416	-24	-0.5%	24	0.5%
24. Naenae South	3,558	3,453	3,483	105	3.0%	75	2.2%
25. Epunu East	2,934	3,033	2,991	-99	-3.3%	-57	-1.9%
26. Waterloo East	4,134	4,149	4,083	-15	-0.4%	51	1.2%
27. Waiwhetu North	1,413	1,380	1,284	33	2.4%	129	10.0%
<b>Western Ward</b>	<b>11,913</b>	<b>11,634</b>	<b>11,337</b>	<b>279</b>	<b>2.4%</b>	<b>576</b>	<b>5.1%</b>
28. Normandale	2,052	2,082	2,061	-30	-1.4%	-9	-0.4%
29. Maungaraki	3,411	3,471	3,420	-60	-1.7%	-9	-0.3%
30. Belmont	3,468	3,174	2,892	294	9.3%	576	19.9%
31. Kelson	2,610	2,652	2,634	-42	-1.6%	-24	-0.9%
32. Haywards-Manor Pk	372	255	330	117	45.9%	42	12.7%
<b>Harbour Ward</b>	<b>17,076</b>	<b>17,100</b>	<b>16,533</b>	<b>-24</b>	<b>-0.1%</b>	<b>543</b>	<b>3.3%</b>
33. Waiwhetu South	2,178	2,208	2,091	-30	-1.4%	87	4.2%
34. Gracefield	75	57	60	18	31.6%	15	25.0%
35. Moera	1,668	1,620	1,632	48	3.0%	36	2.2%
36. Woburn South	417	450	453	-33	-7.3%	-36	-7.9%
37. Korokoro	1,269	1,266	1,188	3	0.2%	81	6.8%
<i>Petone</i>	<i>6,765</i>	<i>6,732</i>	<i>6,510</i>	<i>33</i>	<i>0.5%</i>	<i>255</i>	<i>3.9%</i>
38. Petone Central	843	894	843	-51	-5.7%	0	0.0%
39. Esplanade	2,436	2,445	2,349	-9	-0.4%	87	3.7%
40. Wilford	3,486	3,393	3,318	93	2.7%	168	5.1%
41. Eastbourne	4704	4767	4599	-63	-1.3%	105	2.3%
Kapiti Coast District	42,447	38,583	34,941	3,864	10.0%	7,506	21.5%
Porirua City	47,370	46,626	46,545	744	1.6%	825	1.8%
Upper Hutt	36,372	36,717	36,882	-345	-0.9%	-510	-1.4%
Wellington City	163,827	157,722	148,440	6,105	3.9%	15,387	10.4%
<b>New Zealand</b>	<b>3,737,277</b>	<b>3,618,303</b>	<b>3,373,926</b>	<b>118,974</b>	<b>3.3%</b>	<b>363,351</b>	<b>10.8%</b>

### 2.3 Gender

Hutt City is very similar to New Zealand in terms of gender breakdown with only a 0.1% difference between them. Like New Zealand, Hutt City has more females than males. Figure 5 shows that for the Wards the greatest gender discrepancy occurs in the Central and Eastern Wards. The Central Ward also has the highest average age.

As Figure 6 shows, the largest derivation from an even gender mix occurs in Woburn South where 54.3% of the population are female. Gracefield only has 45.7% males but this is likely to be due to a combination of a rounding error and the small population of Gracefield. In terms of the actual numbers the largest difference occurs in Waterloo East where there is 276 more females than males. Petone Central had the highest proportion of males, with 51.8%

Both Avalon West and Boulcott have a higher than usual proportion of females at 54.0%. In both area units there is a high percentage of the population in the over 65 age group (23.3% and 16.4% respectively). The fact that women are expected to live longer may explain the gender discrepancy. Avalon West has both the largest median age (42.6) and the largest mean age 43. Hutt Central is the other area unit with a high proportion of its population aged over 65 (19.2%). Hutt Central had a gender mix of 53.4%-46.6% in favour of females.

Figure 5: Gender by Ward

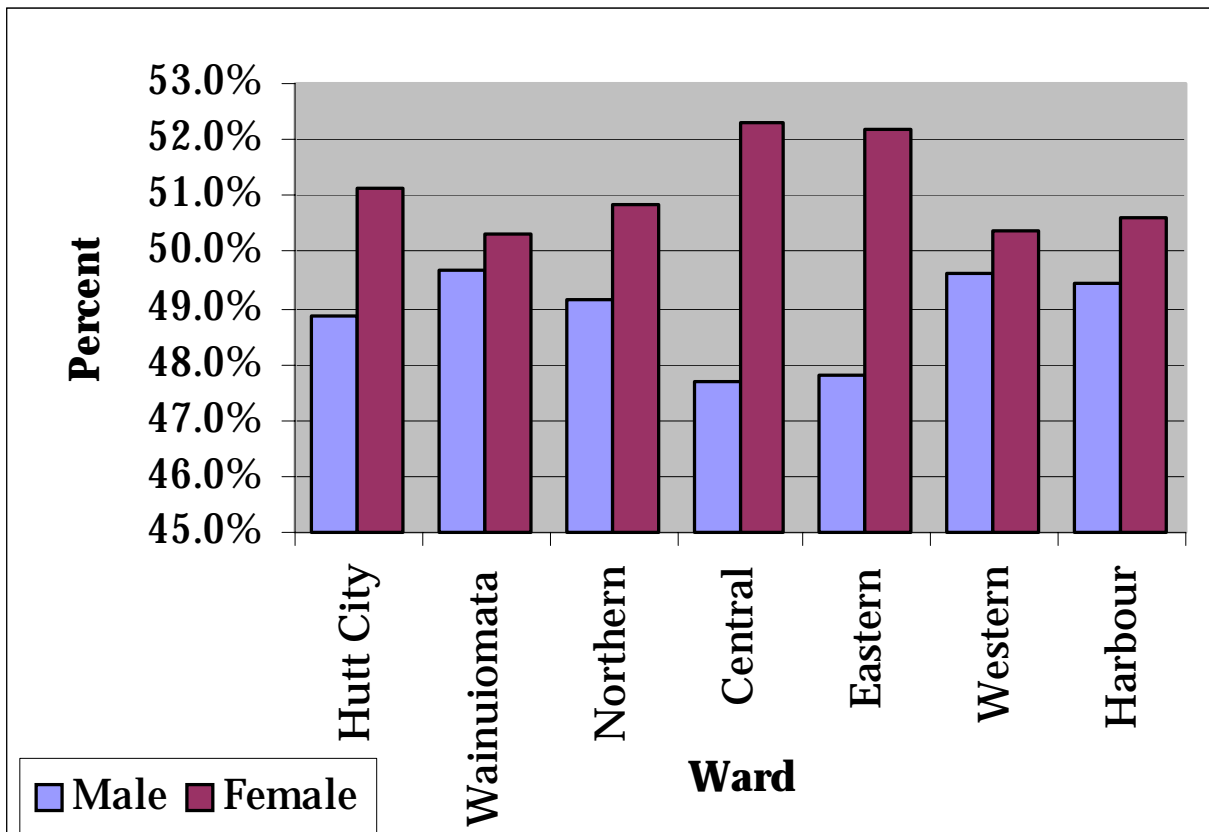


Figure 6: Gender

	Male		Female	
	Count	Percent	Count	Percent
<b>Lower Hutt City</b>	<b>46,650</b>	<b>48.9%</b>	<b>48,828</b>	<b>51.1%</b>
<b>Wainuiomata Ward</b>	<b>8,478</b>	<b>49.7%</b>	<b>8,586</b>	<b>50.3%</b>
1. Glendale	1,737	49.3%	1,788	50.7%
2. Parkway	1,473	49.2%	1,518	50.8%
3. Fernlea	993	49.8%	1,002	50.2%
4. Arakura	1,263	50.0%	1,263	50.0%
5. Homedale West	1,224	49.2%	1,263	50.8%
6. Homedale East	1,557	50.5%	1,527	49.5%
7. Pencarrow	231	50.7%	225	49.3%
<b>Northern Ward</b>	<b>7,278</b>	<b>49.1%</b>	<b>7,530</b>	<b>50.9%</b>
<i>Stokes Valley</i>	4,542	49.4%	4,659	50.6%
8. Tawhai	1,551	49.2%	1,599	50.8%
9. Holborn	990	48.7%	1,041	51.3%
10. Delaney	1,164	49.7%	1,179	50.3%
11. Manuka	837	49.9%	840	50.1%
12. Taita North	1,407	49.3%	1,449	50.7%
13. Taita South	1,329	48.3%	1,422	51.7%
<b>Central Ward</b>	<b>8,661</b>	<b>47.7%</b>	<b>9,492</b>	<b>52.3%</b>
14. Avalon East	1,095	48.9%	1,143	51.1%
15. Avalon West	1,059	46.0%	1,242	54.0%
16. Boulcott	1,116	46.0%	1,308	54.0%
17. Epunu West	1,419	48.2%	1,524	51.8%
18. Waterloo West	450	48.7%	474	51.3%
19. Hutt Central	1,680	46.6%	1,926	53.4%
20. Melling	267	49.7%	270	50.3%
21. Alicetown	945	50.6%	924	49.4%
22. Woburn North	630	48.1%	681	51.9%
<b>Eastern Ward</b>	<b>7,881</b>	<b>47.8%</b>	<b>8,601</b>	<b>52.2%</b>
23. Naenae North	2,142	48.2%	2,301	51.8%
24. Naenae South	1,749	49.2%	1,809	50.8%
25. Epunu East	1,401	47.8%	1,533	52.2%
26. Waterloo East	1,929	46.7%	2,205	53.3%
27. Waiwhetu North	660	46.7%	753	53.3%
<b>Western Ward</b>	<b>5,910</b>	<b>49.6%</b>	<b>6,003</b>	<b>50.4%</b>
28. Normandale	996	48.5%	1,056	51.5%
29. Maungaraki	1,686	49.5%	1,722	50.5%
30. Belmont	1,734	50.0%	1,737	50.0%
31. Kelson	1,308	50.1%	1,302	49.9%
32. Haywards-Manor Park	186	50.0%	186	50.0%
<b>Harbour Ward</b>	<b>8,439</b>	<b>49.4%</b>	<b>8,640</b>	<b>50.6%</b>
33. Waiwhetu South	1,047	48.0%	1,134	52.0%
34. Gracefield	33	45.8%	39	54.2%
35. Moera	837	50.3%	828	49.7%
36. Woburn South	192	45.7%	228	54.3%
37. Korokoro	642	50.5%	630	49.5%
<i>Petone</i>	3,396	50.2%	3,369	49.8%
38. Petone Central	438	51.8%	408	48.2%
39. Esplanade	1,221	50.1%	1,215	49.9%
40. Wilford	1,737	49.9%	1,746	50.1%
41. Eastbourne	2,292	48.7%	2,412	51.3%
Kapiti Coast District	19,908	46.9%	22,539	53.1%
Porirua City	23,244	49.1%	24,126	50.9%
Upper Hutt	18,120	49.8%	18,252	50.2%
Wellington City	79,251	48.4%	84,573	51.6%
<b>New Zealand</b>	<b>1,823,007</b>	<b>48.8%</b>	<b>1,914,270</b>	<b>51.2%</b>

## 2.4 Age Profile

Hutt City, like New Zealand, has an aging population. However, there are some areas where the average age of the population is decreasing including Naenae, Waiwhetu North, and Taita North. Taita North also has the highest percentage of children under five years old.

The Central Ward has the oldest average population of the six wards, shown in Figure 7. This is not surprising as the Central Ward is predominately flat and is the closest to amenities such as the Central Business District (CBD) and Hutt Hospital.

Glendale, in Wainuiomata, had the lowest average age (mean of 29.7). Avalon West had the highest average age (mean of 42.6), and also the largest percentage of people over 65 years old. Hutt Central and Haywards-Manor Park were the only other area units to have an average age of over 40 years old. Haywards-Manor Park experienced the largest increase in the average age; see Figure 8.

Figure 7: Average Age of Population by Ward

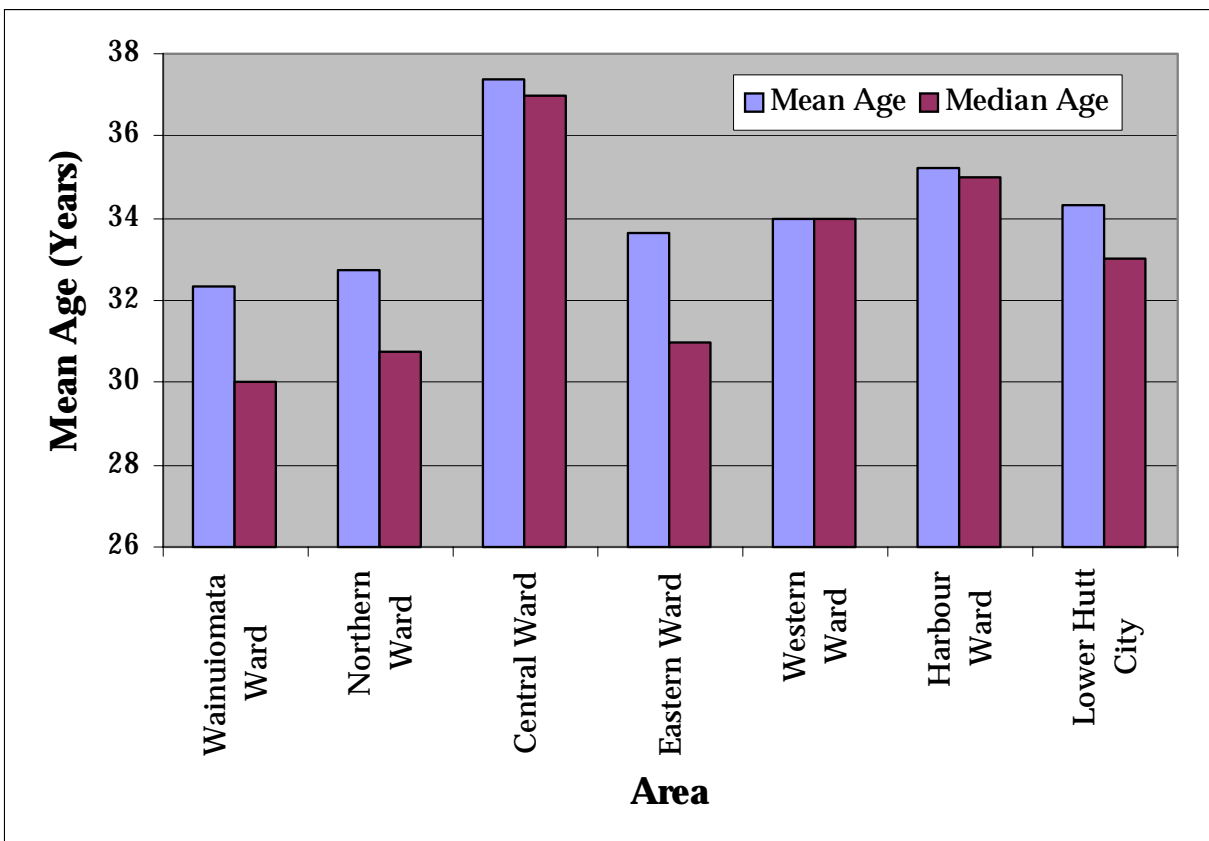


Figure 8: Age Profile

	Under 5yrs	5-12 yrs	13-16 yrs	17-19 yrs	20-24 yrs	25-44 yrs	45-64 yrs	65+ yrs	2001 Mean*	2001 Median*	1996 Mean*	1996 Median*
<b>Lower Hutt City</b>	<b>7.9%</b>	<b>13.1%</b>	<b>5.8%</b>	<b>4.1%</b>	<b>6.2%</b>	<b>31.0%</b>	<b>21.4%</b>	<b>10.5%</b>	<b>34.3</b>	<b>33</b>	<b>33.6</b>	<b>32</b>
<b>Wainuiomata Ward</b>	<b>8.6%</b>	<b>15.0%</b>	<b>7.2%</b>	<b>4.9%</b>	<b>6.6%</b>	<b>29.9%</b>	<b>19.7%</b>	<b>8.1%</b>	<b>32.3</b>	<b>30</b>	<b>30.8</b>	<b>29</b>
1. Glendale	9.0%	16.3%	7.5%	5.3%	7.1%	31.1%	18.0%	5.5%	29.7	28	27.6	26
2. Parkway	9.4%	16.0%	6.6%	3.9%	6.1%	31.4%	19.1%	7.4%	30.9	30	29.5	28
3. Fernlea	8.1%	14.4%	7.2%	5.1%	6.6%	29.3%	20.6%	8.6%	32.3	31	31.7	31
4. Arakura	9.6%	13.9%	6.5%	5.7%	7.5%	29.6%	20.1%	7.4%	31	30	29.5	28
5. Homedale West	7.1%	13.9%	7.1%	4.9%	6.0%	29.2%	19.5%	12.3%	34.4	33	33	31
6. Homedale East	8.5%	15.2%	7.8%	4.6%	6.3%	28.9%	19.8%	9.0%	32.2	31	31.5	30
7. Pencarrow	6.6%	11.2%	7.9%	3.9%	3.9%	27.0%	32.2%	6.6%	35.7	39	33.2	35
<b>Northern Ward</b>	<b>8.9%</b>	<b>14.3%</b>	<b>6.3%</b>	<b>4.1%</b>	<b>6.4%</b>	<b>31.0%</b>	<b>20.0%</b>	<b>9.0%</b>	<b>32.7</b>	<b>31</b>	<b>32.0</b>	<b>30</b>
<i>Stokes Valley</i>	8.3%	14.2%	6.5%	4.0%	6.3%	32.2%	20.5%	7.9%	32.6	32.5	31.4	31
8. Tawhai	8.0%	13.9%	6.2%	3.8%	5.6%	33.4%	20.7%	8.6%	33.1	32	31.6	31
9. Holborn	9.7%	14.6%	5.6%	4.0%	6.8%	34.7%	18.7%	6.0%	30.7	30	29.7	29
10. Delaney	9.9%	15.8%	7.6%	4.1%	6.9%	30.6%	17.3%	7.8%	30.6	29	29.8	28
11. Manuka	4.8%	12.2%	6.4%	4.5%	5.9%	29.3%	26.7%	9.1%	35.6	36	34	34
12. Taita North	10.8%	15.3%	5.9%	3.8%	6.9%	29.5%	18.0%	9.9%	31.8	29	32.5	29
13. Taita South	8.9%	13.5%	6.0%	4.8%	6.5%	28.6%	20.3%	11.6%	33.7	31	33.5	31
<b>Central Ward</b>	<b>6.6%</b>	<b>12.0%</b>	<b>5.2%</b>	<b>3.9%</b>	<b>6.0%</b>	<b>28.6%</b>	<b>22.5%</b>	<b>15.5%</b>	<b>37.4</b>	<b>37</b>	<b>37.1</b>	<b>35</b>
14. Avalon East	7.8%	12.1%	6.2%	4.2%	6.7%	29.4%	19.7%	14.6%	35.9	33	36.1	34
15. Avalon West	6.3%	9.6%	4.0%	3.8%	5.5%	22.7%	24.6%	23.3%	42.6	43	40.7	42
16. Boulcott	6.8%	13.4%	5.3%	2.6%	5.8%	28.6%	21.0%	16.3%	37.6	37	36.9	35
17. Epuni West	6.7%	11.9%	4.2%	4.2%	6.6%	30.2%	21.7%	14.2%	37	36.5	36.6	34
18. Waterloo West	6.5%	14.6%	5.2%	4.5%	5.2%	30.5%	22.7%	11.4%	35.5	37	34.3	34
19. Hutt Central	5.0%	11.5%	6.7%	3.8%	4.6%	23.9%	25.5%	19.2%	41	41	40.7	40
20. Melling	7.9%	10.7%	5.1%	4.5%	10.1%	38.2%	18.5%	7.3%	32.7	32	32.2	30
21. Alicetown	8.5%	11.7%	3.4%	3.7%	6.4%	40.9%	17.3%	8.0%	32.8	32	33	31
22. Woburn North	6.2%	13.5%	6.6%	5.0%	6.4%	24.5%	27.7%	11.0%	36.1	38	35.5	36
<b>Eastern Ward</b>	<b>8.4%</b>	<b>13.4%</b>	<b>5.6%</b>	<b>3.9%</b>	<b>6.5%</b>	<b>30.5%</b>	<b>20.1%</b>	<b>11.5%</b>	<b>33.6</b>	<b>31</b>	<b>33.6</b>	<b>30</b>
23. Naenae North	9.0%	14.3%	6.6%	4.3%	7.2%	29.3%	16.8%	12.7%	33.4	30	34.1	31
24. Naenae South	8.5%	14.1%	6.0%	4.3%	7.1%	30.5%	20.8%	8.8%	32.6	31	33.3	31
25. Epuni East	8.2%	12.1%	4.6%	3.7%	6.4%	31.5%	22.5%	10.8%	34.9	34	33.9	32
26. Waterloo East	7.4%	12.7%	5.0%	3.6%	5.3%	30.6%	22.6%	12.8%	36.2	35	36.3	34
27. Waiwhetu North	9.1%	14.2%	5.3%	3.8%	6.4%	32.2%	16.7%	11.9%	33.2	31	34	31
<b>Western Ward</b>	<b>7.2%</b>	<b>12.6%</b>	<b>5.8%</b>	<b>4.0%</b>	<b>5.7%</b>	<b>34.0%</b>	<b>24.9%</b>	<b>5.9%</b>	<b>34.0</b>	<b>34</b>	<b>32.6</b>	<b>32.5</b>
28. Normandale	6.0%	13.0%	6.1%	3.8%	6.1%	32.3%	26.5%	6.0%	34	35	32.2	33
29. Maungaraki	6.3%	10.9%	4.7%	3.9%	6.6%	35.1%	25.9%	6.6%	34.5	34	33.2	32
30. Belmont	7.8%	14.4%	6.6%	4.1%	4.8%	31.5%	25.6%	5.5%	32.8	35	32	33
31. Kelson	8.6%	12.6%	6.1%	4.3%	5.5%	38.2%	20.6%	4.0%	31	31	29.4	30
32. Haywards-Manor Pk	7.3%	8.1%	4.8%	3.2%	4.8%	26.6%	31.5%	14.5%	40.5	41	36.3	35
<b>Harbour Ward</b>	<b>7.6%</b>	<b>11.5%</b>	<b>4.8%</b>	<b>3.7%</b>	<b>6.2%</b>	<b>33.2%</b>	<b>21.7%</b>	<b>11.4%</b>	<b>35.2</b>	<b>35</b>	<b>35.1</b>	<b>33</b>
33. Waiwhetu South	6.5%	12.5%	5.0%	4.0%	6.9%	32.6%	19.4%	12.8%	35.2	33	34.3	32
34. Gracefield	4.2%	4.2%	16.7%	8.3%	4.2%	45.8%	12.5%	4.2%	30.9	31	27.2	26
35. Moera	9.9%	13.8%	5.0%	3.6%	7.0%	33.5%	18.9%	8.8%	32	30	32	29
36. Woburn South	7.9%	10.1%	6.5%	2.9%	6.5%	33.1%	20.9%	14.4%	36.4	36	33.5	30
37. Korokoro	6.1%	9.9%	5.0%	3.1%	6.1%	34.7%	26.2%	8.7%	36.1	36	34.6	34
<i>Petone</i>	8.4%	10.3%	3.8%	3.9%	7.9%	37.6%	18.1%	9.8%	33.9	31	33.9	32
38. Petone Central	9.3%	10.3%	3.6%	3.6%	8.9%	43.4%	15.7%	6.0%	31.3	31	31.6	29
39. Esplanade	8.7%	8.7%	3.3%	3.9%	8.1%	38.5%	17.6%	10.6%	34.3	32	34.1	31
40. Wilford	7.9%	11.4%	4.2%	4.0%	7.5%	35.6%	19.1%	10.2%	34.2	33	34.4	32
41. Eastbourne	6.6%	12.6%	5.5%	3.6%	3.3%	26.4%	27.9%	14.4%	38.5	40	38.3	39
Kapiti Coast District	6.2%	12.0%	5.3%	2.9%	3.3%	23.9%	24.1%	22.3%	41.5	42	40.1	40
Porirua City	9.6%	15.2%	6.5%	4.5%	6.2%	30.5%	20.7%	6.8%	31.2	30	30.7	29
Upper Hutt	7.3%	12.9%	6.1%	4.3%	5.9%	29.7%	21.8%	11.9%	35.1	35	33.6	32
Wellington City	6.5%	9.7%	4.6%	4.6%	9.5%	36.2%	20.3%	8.6%	34.1	32	33.5	31
<b>New Zealand</b>	<b>7.2%</b>	<b>12.4%</b>	<b>5.9%</b>	<b>4.2%</b>	<b>6.4%</b>	<b>29.7%</b>	<b>22.1%</b>	<b>12.1%</b>	<b>35.4</b>	<b>34</b>	<b>34.3</b>	<b>32</b>

\* The mean and median age has been calculated using meshblock data for the Ward, Stokes Valley and Petone totals.

## 2.5 Ethnicity

Many of the Census variables can be released by Statistics New Zealand at different levels of detail and ethnicity is one of them. Due to size constraints and the level of complexity in graphing the more detailed data sets Figures 9-11 depict different levels of ethnicity Census data.

The Census ethnicity question allowed for multiple responses to be given. This meant that people could mark down every ethnic group that they feel they belong to. For this reason the values in the ethnicity tables do not add up to 100% or the total city population. The percentages in Figures 10 and 11 have been calculated on the basis of what percent of the population identified themselves as belonging to the ethnic group. Whereas, the percentages in Figure 9 are based on the total number of responses (i.e. multiple responses are counted once for every response).

Where 'Other' has been used in the ethnicity group title this includes all the more detailed classifications that have not already been mentioned. E.g. 'Other European' in Figure 10 includes all the European Groups except 'NZ European'. The term "nfd" (not further defined) is used when the response is less detailed than other groupings. E.g. European was specified but not whether they are NZ European, British, German etc.

Hutt City has a similar ethnic breakdown to New Zealand. The only significant difference is that Hutt City has a higher percentage within the 'Pacific Peoples Ethnic Groups'. Figures 9 and 11 show that there is considerable variation between the different areas of the City.

Figure 9: Ethnic Diversity

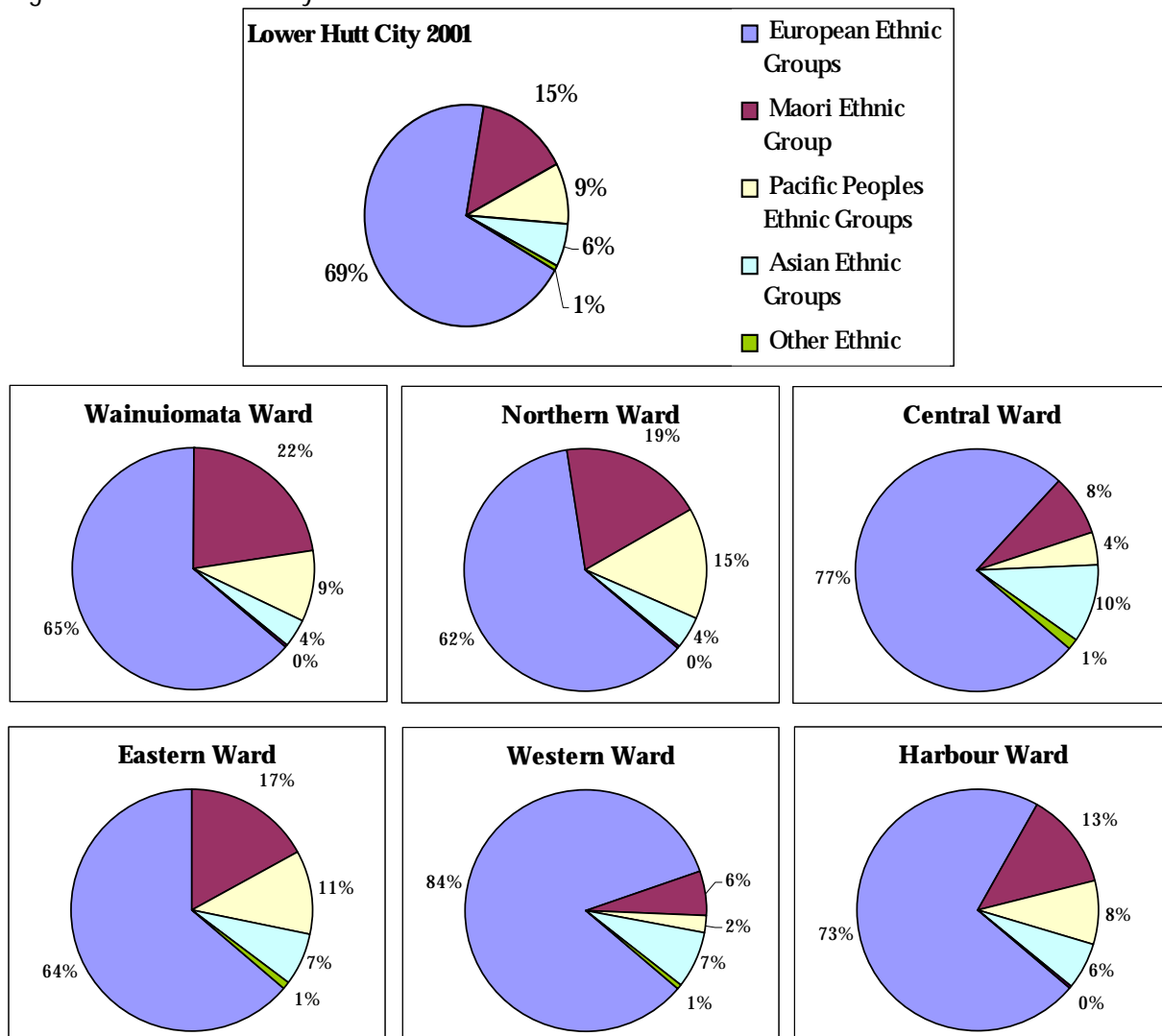


Figure 9 also shows that the Western Ward is dominated by the European groups with the Asian groups the next highest. The proportion of Maori in the Wainuiomata, Northern, and Eastern Wards are higher than for Hutt City as a whole. The Northern Ward also has a significantly higher proportion of Pacific Islanders. The largest proportion of Asians are found within the Central Ward.

The vast majority of city residents identify themselves as New Zealand European. As Figure 10 shows this is consistent with the New Zealand proportions. Hutt City also has a slightly larger proportion of Maori to the New Zealand data. However the most significant difference is in the proportion of Samoans in Hutt City. Samoans, Tokelauans, Indians, Sri Lankans, British and Irish, and Africans all have a higher representation in Hutt City than New Zealand.

There are large percentages of Maori in Arakura, Glendale (and most of urban Wainuiomata), Delaney, Taita, Naenae, Waiwhetu North, and Moera. With the exception of Moera, these area units are within the three wards that have the highest proportions of Maori than Hutt City (see Figure 11). The Western Ward, Eastbourne, Hutt Central, and Waterloo West all have a low percentage of people whom identify themselves as Maori.

Often members of individual minority ethnic groups live within close proximity to each other. Therefore, there are areas of Hutt City with much higher percentages of particular ethnic groups. This can be seen in Figure 11, which shows the ethnic diversity of the individual area units. For example there is a large proportion of Samoans in Taita (especially Taita North) and a large proportion of Africans in Avalon East.

Figure 10: Ethnic Groups ranked by population in City

	Lower Hutt City		New Zealand
New Zealand European	66,687	71.7%	75.2%
Maori	14,913	16.0%	14.7%
Samoan	5,655	6.1%	3.2%
Chinese	2,583	2.8%	2.9%
British and Irish	2,325	2.5%	2.2%
Indian	2,253	2.4%	1.7%
Cook Island Maori	1,398	1.5%	1.5%
Other European	1,170	1.3%	1.4%
Tokelauan	933	1.0%	0.2%
Tongan	741	0.8%	1.1%
Dutch	702	0.8%	0.8%
European nfd	615	0.7%	0.7%
Sri Lankan	474	0.5%	0.2%
Australian	411	0.4%	0.6%
Filipino	354	0.4%	0.3%
African (or cultural groups of African origin)	327	0.4%	0.2%
Other Southeast Asian	324	0.3%	0.3%
Niuean	294	0.3%	0.6%
South Slav (formerly Yugoslav)	276	0.3%	0.2%
German	243	0.3%	0.3%
Middle Eastern	240	0.3%	0.4%
Khmer/Kampuchean/Cambodian	237	0.3%	0.1%
Fijian	204	0.2%	0.2%
Polish	168	0.2%	0.1%
Italian	129	0.1%	0.1%
Asian nfd	126	0.1%	0.1%
Greek	117	0.1%	0.1%
Other Pacific Peoples	114	0.1%	0.2%
Japanese	99	0.1%	0.3%
Vietnamese	87	0.1%	0.1%
Korean	84	0.1%	0.5%
Latin American/ Hispanic	84	0.1%	0.1%
Pacific Peoples nfd	21	0.0%	0.0%
Other Asian	12	0.0%	0.1%
Other European nfd	6	0.0%	0.0%
Southeast Asian nfd	6	0.0%	0.0%
Other	15	0.0%	0.0%

nfd = not further defined

2.5 Ethnicity

Figure 11: Ethnicity (Total Response)

	European nfd	NZ European	Other European	Maori	Pacific Peoples nfd	Samoan	Cook Island Maori	Tongan	Niuean	Tokelauan	Fijian
<b>Lower Hutt City</b>	<b>0.7%</b>	<b>71.7%</b>	<b>5.7%</b>	<b>16.0%</b>	<b>0.0%</b>	<b>6.1%</b>	<b>1.5%</b>	<b>0.8%</b>	<b>0.3%</b>	<b>1.0%</b>	<b>0.2%</b>
<b>Wainuiomata Ward</b>	<b>0.5%</b>	<b>69.0%</b>	<b>5.8%</b>	<b>25.6%</b>	<b>0.0%</b>	<b>8.1%</b>	<b>1.5%</b>	<b>0.5%</b>	<b>0.4%</b>	<b>0.5%</b>	<b>0.2%</b>
1. Glendale	0.5%	62.2%	4.8%	35.4%	0.0%	9.3%	2.4%	0.7%	0.3%	1.0%	0.0%
2. Parkway	0.9%	69.3%	6.1%	18.9%	0.0%	10.4%	1.3%	0.3%	0.6%	0.3%	0.2%
3. Fernlea	0.6%	69.4%	5.3%	22.6%	0.0%	8.2%	1.4%	0.3%	0.2%	0.2%	0.8%
4. Arakura	0.1%	62.8%	5.8%	30.1%	0.0%	10.5%	1.5%	1.0%	0.4%	0.7%	0.4%
5. Homedale West	0.4%	74.2%	6.2%	24.5%	0.0%	4.7%	1.2%	0.5%	0.5%	0.6%	0.2%
6. Homedale East	0.6%	74.3%	6.5%	22.7%	0.0%	6.3%	1.0%	0.4%	0.5%	0.3%	0.0%
7. Pencarrow	0.7%	88.3%	7.6%	7.6%	0.0%	0.7%	0.0%	0.0%	0.0%	0.0%	0.0%
<b>Northern Ward</b>	<b>0.6%</b>	<b>65.6%</b>	<b>4.6%</b>	<b>21.6%</b>	<b>0.0%</b>	<b>10.9%</b>	<b>2.4%</b>	<b>1.5%</b>	<b>0.6%</b>	<b>1.4%</b>	<b>0.4%</b>
<i>Stokes Valley</i>	<i>0.7%</i>	<i>74.9%</i>	<i>5.6%</i>	<i>19.2%</i>	<i>0.0%</i>	<i>4.4%</i>	<i>1.9%</i>	<i>0.4%</i>	<i>0.3%</i>	<i>0.9%</i>	<i>0.2%</i>
8. Tawhai	0.9%	81.1%	6.3%	15.2%	0.0%	2.4%	2.0%	0.1%	0.2%	0.2%	0.2%
9. Holborn	0.5%	73.3%	5.1%	22.7%	0.0%	5.4%	1.1%	0.0%	0.3%	1.2%	0.3%
10. Delaney	0.7%	59.5%	4.8%	28.2%	0.0%	8.8%	3.1%	1.3%	0.5%	1.9%	0.1%
11. Manuka	0.7%	86.2%	6.1%	10.3%	0.0%	0.7%	1.3%	0.0%	0.0%	0.6%	0.2%
12. Taita North	0.2%	42.6%	2.5%	26.3%	0.0%	26.7%	4.3%	5.4%	1.3%	2.3%	1.3%
13. Taita South	0.6%	58.0%	3.4%	25.0%	0.1%	16.4%	2.0%	1.2%	1.0%	1.9%	0.3%
<b>Central Ward</b>	<b>0.6%</b>	<b>76.4%</b>	<b>5.5%</b>	<b>8.6%</b>	<b>0.0%</b>	<b>3.0%</b>	<b>0.9%</b>	<b>0.4%</b>	<b>0.2%</b>	<b>0.4%</b>	<b>0.2%</b>
14. Avalon East	0.3%	61.2%	4.9%	13.5%	0.0%	8.9%	1.5%	1.1%	0.4%	0.7%	0.5%
15. Avalon West	0.5%	74.3%	4.5%	6.7%	0.0%	2.9%	1.2%	0.4%	0.1%	0.4%	0.1%
16. Boulcott	0.6%	81.0%	5.5%	7.3%	0.0%	2.3%	0.4%	0.3%	0.1%	0.6%	0.1%
17. Epuni West	0.9%	76.6%	5.6%	10.6%	0.1%	3.0%	1.3%	0.4%	0.2%	0.4%	0.4%
18. Waterloo West	0.3%	80.8%	3.6%	4.6%	0.0%	0.7%	0.3%	0.3%	0.0%	0.3%	0.0%
19. Hutt Central	0.7%	81.2%	6.1%	4.4%	0.0%	0.8%	0.1%	0.1%	0.1%	0.0%	0.0%
20. Melling	0.0%	74.4%	5.4%	16.1%	0.0%	3.0%	1.8%	0.0%	0.0%	1.2%	0.0%
21. Alicetown	0.7%	76.2%	5.1%	13.8%	0.0%	3.8%	1.8%	0.2%	0.2%	0.2%	0.2%
22. Woburn North	1.2%	81.6%	7.7%	5.8%	0.0%	1.2%	0.0%	0.2%	0.0%	0.0%	0.0%
<b>Eastern Ward</b>	<b>0.5%</b>	<b>66.8%</b>	<b>4.7%</b>	<b>18.5%</b>	<b>0.0%</b>	<b>7.1%</b>	<b>2.4%</b>	<b>1.1%</b>	<b>0.4%</b>	<b>2.1%</b>	<b>0.1%</b>
23. Naenae North	0.5%	57.9%	3.6%	24.2%	0.0%	12.3%	3.5%	1.1%	0.9%	4.9%	0.1%
24. Naenae South	0.5%	59.3%	4.1%	25.3%	0.0%	9.2%	3.3%	1.5%	0.4%	2.4%	0.3%
25. Epuni East	0.7%	72.1%	4.9%	11.8%	0.0%	5.2%	1.8%	1.1%	0.0%	0.7%	0.2%
26. Waterloo East	0.4%	80.8%	5.4%	8.2%	0.1%	1.4%	0.7%	0.6%	0.1%	0.2%	0.1%
27. Waiwhetu North	0.4%	60.3%	7.2%	28.0%	0.0%	5.9%	2.8%	1.3%	0.0%	1.5%	0.0%
<b>Western Ward</b>	<b>1.0%</b>	<b>81.5%</b>	<b>7.6%</b>	<b>6.1%</b>	<b>0.1%</b>	<b>1.5%</b>	<b>0.4%</b>	<b>0.1%</b>	<b>0.1%</b>	<b>0.4%</b>	<b>0.2%</b>
28. Normandale	1.8%	84.7%	8.2%	5.2%	0.0%	1.5%	0.3%	0.0%	0.0%	0.0%	0.0%
29. Maungaraki	1.1%	78.7%	7.4%	5.7%	0.0%	1.5%	0.2%	0.1%	0.1%	0.5%	0.2%
30. Belmont	0.8%	84.4%	8.2%	5.8%	0.0%	0.8%	0.4%	0.0%	0.2%	0.1%	0.3%
31. Kelson	0.5%	78.7%	6.9%	6.7%	0.1%	2.0%	0.6%	0.1%	0.2%	0.6%	0.5%
32. Haywards-Manor Pk	1.7%	81.8%	7.4%	13.2%	0.8%	3.3%	2.5%	0.0%	0.0%	1.7%	0.0%
<b>Harbour Ward</b>	<b>0.9%</b>	<b>76.4%</b>	<b>6.7%</b>	<b>11.8%</b>	<b>0.0%</b>	<b>4.5%</b>	<b>1.2%</b>	<b>0.9%</b>	<b>0.2%</b>	<b>1.0%</b>	<b>0.1%</b>
33. Waiwhetu South	0.3%	71.2%	5.6%	15.1%	0.0%	8.8%	1.9%	1.4%	0.1%	0.4%	0.3%
34. Gracefield	0.0%	59.1%	13.6%	36.4%	0.0%	9.1%	0.0%	0.0%	0.0%	0.0%	0.0%
35. Moera	0.8%	46.2%	4.5%	29.0%	0.0%	9.3%	4.0%	4.4%	0.4%	1.9%	0.0%
36. Woburn South	1.4%	71.2%	12.2%	12.9%	0.0%	4.3%	0.0%	0.0%	0.0%	0.0%	0.0%
37. Korokoro	1.0%	86.1%	7.1%	5.9%	0.0%	1.0%	0.5%	0.0%	0.0%	0.7%	0.0%
<i>Petone</i>	<i>0.7%</i>	<i>64.9%</i>	<i>5.4%</i>	<i>19.1%</i>	<i>0.0%</i>	<i>8.2%</i>	<i>1.7%</i>	<i>1.3%</i>	<i>0.3%</i>	<i>2.3%</i>	<i>0.1%</i>
38. Petone Central	1.1%	69.5%	5.9%	18.6%	0.0%	5.2%	0.7%	1.5%	0.7%	1.1%	0.0%
39. Esplanade	0.4%	65.1%	5.1%	21.7%	0.0%	6.6%	2.2%	2.1%	0.4%	2.6%	0.4%
40. Wilford	0.8%	63.6%	5.5%	17.4%	0.0%	9.9%	1.6%	0.8%	0.2%	2.4%	0.0%
41. Eastbourne	1.1%	90.0%	8.0%	3.4%	0.1%	0.5%	0.3%	0.0%	0.1%	0.1%	0.0%
<b>New Zealand</b>	<b>0.7%</b>	<b>75.2%</b>	<b>5.3%</b>	<b>14.7%</b>	<b>0.0%</b>	<b>3.2%</b>	<b>1.5%</b>	<b>1.1%</b>	<b>0.6%</b>	<b>0.2%</b>	<b>0.2%</b>

nfd = not further defined

Figure 11: Ethnicity (Total Response) continued

	Other Pacific Peoples	Asian nfd	Southeast Asian	Chinese	Indian	Other Asian	Middle Eastern	Latin American/Hispanic	African	Other
<b>Lower Hutt City</b>	<b>0.1%</b>	<b>0.1%</b>	<b>1.1%</b>	<b>2.8%</b>	<b>2.4%</b>	<b>0.7%</b>	<b>0.3%</b>	<b>0.1%</b>	<b>0.4%</b>	<b>0.0%</b>
<b>Wainuiomata Ward</b>	<b>0.1%</b>	<b>0.1%</b>	<b>1.0%</b>	<b>1.2%</b>	<b>1.8%</b>	<b>0.2%</b>	<b>0.3%</b>	<b>0.0%</b>	<b>0.0%</b>	<b>0.0%</b>
1. Glendale	0.2%	0.0%	0.9%	1.1%	1.4%	0.3%	0.5%	0.0%	0.0%	0.0%
2. Parkway	0.0%	0.1%	1.3%	1.4%	3.3%	0.4%	0.2%	0.1%	0.0%	0.0%
3. Fernlea	0.0%	0.5%	1.2%	1.1%	3.0%	0.0%	0.3%	0.0%	0.0%	0.0%
4. Arakura	0.2%	0.0%	1.8%	1.6%	1.6%	0.2%	0.5%	0.0%	0.0%	0.0%
5. Homedale West	0.1%	0.1%	0.2%	0.9%	1.0%	0.5%	0.0%	0.0%	0.2%	0.0%
6. Homedale East	0.3%	0.1%	0.7%	1.2%	0.8%	0.0%	0.0%	0.0%	0.0%	0.1%
7. Pencarrow	0.0%	0.0%	0.0%	1.4%	0.7%	0.0%	0.0%	0.0%	0.0%	0.0%
<b>Northern Ward</b>	<b>0.1%</b>	<b>0.2%</b>	<b>1.3%</b>	<b>1.5%</b>	<b>1.5%</b>	<b>0.5%</b>	<b>0.0%</b>	<b>0.1%</b>	<b>0.1%</b>	<b>0.0%</b>
<i>Stokes Valley</i>	<i>0.1%</i>	<i>0.2%</i>	<i>1.0%</i>	<i>1.1%</i>	<i>1.1%</i>	<i>0.6%</i>	<i>0.0%</i>	<i>0.1%</i>	<i>0.1%</i>	<i>0.0%</i>
8. Tawhai	0.1%	0.3%	0.9%	1.5%	1.0%	0.5%	0.0%	0.3%	0.0%	0.0%
9. Holborn	0.2%	0.0%	1.1%	0.6%	0.9%	0.5%	0.0%	0.0%	0.2%	0.2%
10. Delaney	0.1%	0.3%	1.3%	0.8%	1.9%	1.1%	0.0%	0.0%	0.4%	0.0%
11. Manuka	0.0%	0.0%	0.7%	1.7%	0.4%	0.2%	0.0%	0.0%	0.0%	0.0%
12. Taita North	0.2%	0.2%	1.4%	2.0%	1.2%	0.2%	0.0%	0.0%	0.1%	0.0%
13. Taita South	0.1%	0.1%	2.0%	2.3%	3.3%	0.5%	0.1%	0.0%	0.0%	0.0%
<b>Central Ward</b>	<b>0.1%</b>	<b>0.2%</b>	<b>0.9%</b>	<b>5.2%</b>	<b>3.5%</b>	<b>1.0%</b>	<b>0.4%</b>	<b>0.1%</b>	<b>1.0%</b>	<b>0.0%</b>
14. Avalon East	0.1%	0.1%	0.8%	6.8%	4.1%	0.3%	1.0%	0.3%	4.9%	0.0%
15. Avalon West	0.1%	0.0%	1.1%	6.7%	5.6%	0.8%	0.0%	0.0%	1.5%	0.0%
16. Boulcott	0.1%	0.1%	0.8%	5.1%	2.5%	0.6%	0.4%	0.0%	0.5%	0.0%
17. Epuni West	0.0%	0.2%	0.8%	3.5%	3.1%	2.1%	0.4%	0.1%	0.2%	0.0%
18. Waterloo West	0.3%	1.0%	2.3%	5.6%	4.0%	1.3%	0.7%	0.0%	0.0%	0.0%
19. Hutt Central	0.0%	0.3%	1.1%	6.3%	2.2%	1.4%	0.2%	0.2%	0.3%	0.1%
20. Melling	0.0%	0.0%	0.6%	6.0%	3.6%	0.6%	0.6%	0.0%	1.2%	0.0%
21. Alicetown	0.0%	0.0%	0.5%	2.8%	5.6%	0.0%	0.5%	0.0%	0.0%	0.0%
22. Woburn North	0.0%	0.0%	0.9%	4.0%	2.3%	1.2%	0.5%	0.2%	0.0%	0.0%
<b>Eastern Ward</b>	<b>0.1%</b>	<b>0.1%</b>	<b>1.2%</b>	<b>3.3%</b>	<b>2.2%</b>	<b>0.9%</b>	<b>0.3%</b>	<b>0.0%</b>	<b>0.5%</b>	<b>0.0%</b>
23. Naenae North	0.1%	0.1%	1.7%	2.4%	1.7%	0.2%	0.2%	0.0%	0.9%	0.0%
24. Naenae South	0.1%	0.2%	1.7%	2.9%	1.3%	0.9%	0.4%	0.1%	0.4%	0.0%
25. Epuni East	0.2%	0.1%	1.6%	4.3%	3.2%	0.4%	0.2%	0.0%	0.9%	0.0%
26. Waterloo East	0.1%	0.0%	0.3%	3.5%	2.7%	2.2%	0.4%	0.0%	0.0%	0.0%
27. Waiwhetu North	0.0%	0.0%	0.7%	4.6%	1.7%	0.9%	0.2%	0.2%	0.0%	0.0%
<b>Western Ward</b>	<b>0.2%</b>	<b>0.1%</b>	<b>1.3%</b>	<b>2.6%</b>	<b>3.2%</b>	<b>0.8%</b>	<b>0.4%</b>	<b>0.1%</b>	<b>0.2%</b>	<b>0.0%</b>
28. Normandale	0.1%	0.0%	0.6%	1.9%	1.5%	0.4%	0.9%	0.0%	0.3%	0.0%
29. Maungaraki	0.1%	0.2%	2.4%	3.4%	4.1%	1.4%	0.5%	0.2%	0.2%	0.1%
30. Belmont	0.2%	0.2%	0.7%	1.9%	1.8%	0.4%	0.4%	0.2%	0.2%	0.0%
31. Kelson	0.2%	0.0%	1.3%	2.8%	5.8%	1.2%	0.0%	0.1%	0.1%	0.0%
32. Haywards-Manor Pk	0.0%	0.0%	0.0%	3.3%	0.8%	0.0%	0.0%	0.0%	0.0%	0.0%
<b>Harbour Ward</b>	<b>0.1%</b>	<b>0.2%</b>	<b>0.6%</b>	<b>2.1%</b>	<b>1.9%</b>	<b>0.7%</b>	<b>0.1%</b>	<b>0.1%</b>	<b>0.1%</b>	<b>0.0%</b>
33. Waiwhetu South	0.0%	0.1%	0.9%	2.6%	1.9%	0.7%	0.3%	0.3%	0.1%	0.0%
34. Gracefield	0.0%	0.0%	0.0%	0.0%	0.0%	0.0%	0.0%	0.0%	0.0%	0.0%
35. Moera	0.4%	0.0%	1.7%	2.5%	7.0%	4.2%	0.2%	0.2%	0.0%	0.0%
36. Woburn South	1.4%	0.0%	0.0%	1.4%	2.2%	1.4%	0.0%	0.0%	0.0%	0.7%
37. Korokoro	0.0%	0.2%	1.0%	1.5%	0.7%	0.0%	0.2%	0.0%	0.5%	0.0%
<i>Petone</i>	<i>0.1%</i>	<i>0.2%</i>	<i>0.8%</i>	<i>3.9%</i>	<i>3.3%</i>	<i>0.7%</i>	<i>0.2%</i>	<i>0.0%</i>	<i>0.1%</i>	<i>0.0%</i>
38. Petone Central	0.0%	0.0%	1.5%	4.1%	2.6%	0.4%	0.4%	0.0%	0.0%	0.0%
39. Esplanade	0.0%	0.1%	0.5%	3.5%	2.5%	0.4%	0.3%	0.1%	0.3%	0.0%
40. Wilford	0.3%	0.3%	0.8%	4.2%	4.1%	1.0%	0.1%	0.0%	0.0%	0.0%
41. Eastbourne	0.1%	0.2%	0.3%	0.8%	0.2%	0.2%	0.1%	0.1%	0.1%	0.0%
<b>New Zealand</b>	<b>0.2%</b>	<b>0.1%</b>	<b>0.9%</b>	<b>2.9%</b>	<b>1.7%</b>	<b>1.1%</b>	<b>0.4%</b>	<b>0.1%</b>	<b>0.2%</b>	<b>0.0%</b>

nfd = not further defined

## 2.6 Religious Affiliation

There is a diversity of religious affiliation in Hutt City. In some cases the religious affiliation can be related to the ethnic groups that live in the area. For instance Figure 12 shows the relationship between the Indian Ethnic Group and Hindus, and the Maori Ethnic Group and Maori Christians.

Figure 13 has been limited to only those religions that 0.5% or more of Hutt City's population belong to. The categories that have not been included are as follows with the percentage in Hutt City in brackets: Judaism/Jewish (0.2%), Spiritualism and New Age Religions (0.46%), and Other Religions (0.4%).

The 'Not Elsewhere Included' category includes any responses that Statistics New Zealand does not recognise as a religion (e.g. Jedi).

Again, Hutt City is very similar to the responses for New Zealand. Like the Ethnicity responses, there are variations between the different areas of Hutt City. For instance, only 0.6% of people in Hutt City identify themselves as Islam/Muslim, but in Avalon East the percentage is 4.8%.

Figure 12: Religious Affiliation and Ethnicity

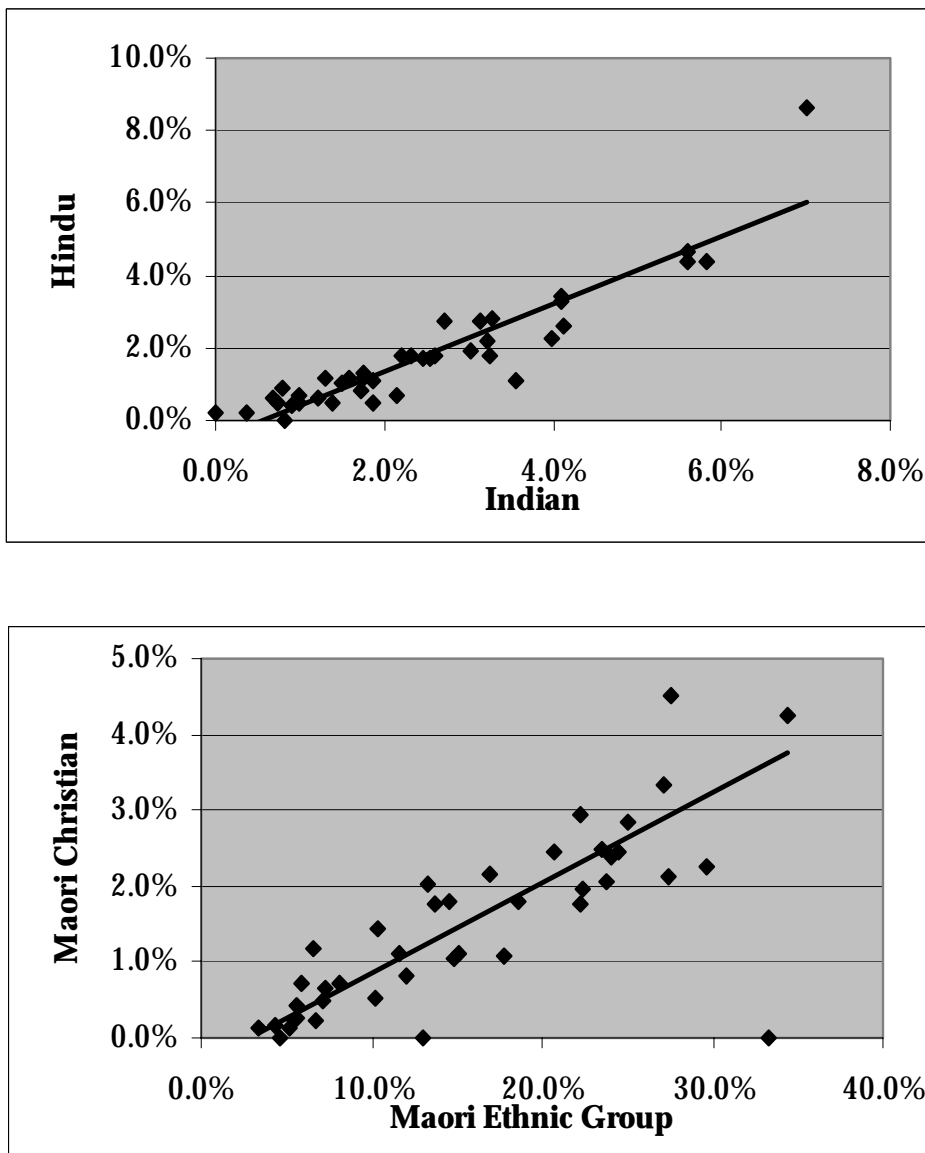


Figure 13: Religious Affiliation

	No Religion	Buddhist	Christian	Hindu	Islam / Muslim	Maori Christian	Object to Answering	Not Elsewhere Included
<b>Lower Hutt City</b>	<b>27.1%</b>	<b>1.2%</b>	<b>54.3%</b>	<b>1.8%</b>	<b>0.6%</b>	<b>1.5%</b>	<b>6.2%</b>	<b>6.1%</b>
<b>Wainuiomata Ward</b>	<b>28.9%</b>	<b>0.8%</b>	<b>52.5%</b>	<b>1.1%</b>	<b>0.2%</b>	<b>2.3%</b>	<b>7.5%</b>	<b>5.8%</b>
1. Glendale	27.2%	0.8%	52.3%	0.5%	0.2%	4.2%	8.3%	5.9%
2. Parkway	28.8%	1.2%	53.5%	1.8%	0.2%	1.8%	7.5%	4.5%
3. Fernlea	28.5%	1.2%	55.3%	1.9%	0.1%	1.9%	6.0%	4.4%
4. Arakura	27.6%	0.8%	53.7%	1.2%	0.2%	2.2%	7.5%	5.9%
5. Homedale West	31.6%	0.5%	49.4%	0.7%	0.4%	2.0%	8.4%	6.3%
6. Homedale East	29.6%	0.7%	52.2%	0.9%	0.3%	1.7%	6.9%	7.1%
7. Pencarrow	33.1%	0.6%	49.4%	0.6%	0.0%	0.6%	7.8%	7.1%
<b>Northern Ward</b>	<b>26.4%</b>	<b>1.4%</b>	<b>53.1%</b>	<b>0.9%</b>	<b>0.2%</b>	<b>2.2%</b>	<b>7.1%</b>	<b>7.6%</b>
<i>Stokes Valley</i>	<i>29.6%</i>	<i>1.4%</i>	<i>51.0%</i>	<i>0.4%</i>	<i>0.1%</i>	<i>1.9%</i>	<i>7.5%</i>	<i>6.9%</i>
8. Tawhai	31.0%	1.5%	51.2%	0.5%	0.0%	1.0%	8.0%	5.5%
9. Holborn	30.7%	1.0%	49.9%	0.4%	0.0%	2.9%	8.0%	6.4%
10. Delaney	26.3%	2.0%	48.7%	0.5%	0.4%	3.3%	7.0%	10.5%
11. Manuka	30.5%	1.1%	55.4%	0.2%	0.0%	0.5%	6.5%	5.3%
12. Taita North	18.3%	1.1%	60.0%	0.6%	0.4%	2.8%	5.9%	9.8%
13. Taita South	24.0%	1.3%	53.1%	2.8%	0.5%	2.4%	7.1%	7.8%
<b>Central Ward</b>	<b>25.3%</b>	<b>1.6%</b>	<b>57.0%</b>	<b>2.8%</b>	<b>1.4%</b>	<b>0.9%</b>	<b>5.5%</b>	<b>4.8%</b>
14. Avalon East	24.6%	2.0%	51.7%	3.4%	4.8%	2.0%	6.2%	4.8%
15. Avalon West	23.7%	2.1%	56.9%	4.6%	1.3%	1.2%	5.8%	3.9%
16. Boulcott	26.3%	1.3%	58.6%	1.7%	1.1%	0.5%	5.1%	4.7%
17. Epuni West	25.7%	1.7%	56.2%	2.7%	0.6%	1.4%	5.9%	4.3%
18. Waterloo West	22.0%	1.6%	62.7%	2.2%	1.0%	0.0%	5.1%	4.8%
19. Hutt Central	22.6%	1.8%	63.5%	1.8%	0.6%	0.2%	4.6%	4.4%
20. Melling	30.5%	1.6%	43.3%	1.1%	3.2%	1.1%	7.0%	11.8%
21. Alicetown	32.2%	0.6%	46.7%	4.4%	1.1%	1.7%	5.9%	5.8%
22. Woburn North	23.8%	0.9%	63.8%	1.8%	0.0%	0.2%	4.8%	4.3%
<b>Eastern Ward</b>	<b>25.2%</b>	<b>1.2%</b>	<b>56.0%</b>	<b>1.8%</b>	<b>0.8%</b>	<b>1.7%</b>	<b>6.3%</b>	<b>6.0%</b>
23. Naenae North	23.6%	1.9%	54.3%	1.3%	0.9%	2.4%	6.9%	7.3%
24. Naenae South	25.6%	1.8%	53.8%	1.2%	0.9%	2.4%	6.4%	6.9%
25. Epuni East	25.0%	1.1%	56.9%	2.2%	1.1%	1.1%	5.4%	5.9%
26. Waterloo East	26.1%	0.1%	59.1%	2.7%	0.1%	0.7%	6.2%	3.8%
27. Waiwhetu North	26.9%	0.6%	56.0%	0.8%	0.8%	2.1%	5.6%	5.8%
<b>Western Ward</b>	<b>29.4%</b>	<b>1.2%</b>	<b>54.0%</b>	<b>2.4%</b>	<b>0.6%</b>	<b>0.3%</b>	<b>5.7%</b>	<b>5.2%</b>
28. Normandale	31.8%	0.4%	54.4%	1.0%	0.3%	0.1%	5.8%	4.5%
29. Maungaraki	27.7%	1.6%	53.5%	3.3%	0.9%	0.4%	5.5%	5.7%
30. Belmont	31.2%	0.9%	53.6%	1.2%	0.2%	0.3%	5.8%	5.4%
31. Kelson	27.8%	1.6%	54.3%	4.4%	1.0%	0.2%	5.3%	4.5%
32. Haywards-Manor Pk	26.0%	0.0%	57.7%	0.0%	0.8%	0.8%	7.3%	6.5%
<b>Harbour Ward</b>	<b>28.2%</b>	<b>0.9%</b>	<b>52.9%</b>	<b>2.0%</b>	<b>0.4%</b>	<b>1.6%</b>	<b>5.4%</b>	<b>7.2%</b>
33. Waiwhetu South	24.1%	0.7%	58.7%	1.1%	0.5%	1.8%	4.7%	7.0%
34. Gracefield	42.9%	0.0%	28.6%	3.6%	0.0%	0.0%	0.0%	21.4%
35. Moera	23.1%	0.7%	46.0%	8.6%	0.7%	4.4%	5.6%	9.7%
36. Woburn South	22.9%	0.0%	66.4%	0.7%	0.0%	0.0%	2.9%	4.3%
37. Korokoro	31.3%	1.8%	53.5%	0.5%	0.2%	0.7%	5.1%	6.0%
<i>Petone</i>	<i>27.9%</i>	<i>1.0%</i>	<i>50.8%</i>	<i>2.2%</i>	<i>0.6%</i>	<i>2.1%</i>	<i>5.7%</i>	<i>8.3%</i>
38. Petone Central	32.0%	2.1%	45.4%	1.8%	0.7%	1.1%	7.4%	8.1%
39. Esplanade	28.7%	0.5%	49.6%	1.7%	0.5%	2.4%	5.7%	9.4%
40. Wilford	26.4%	1.2%	52.9%	2.6%	0.7%	2.1%	5.4%	7.5%
41. Eastbourne	31.6%	0.7%	54.9%	0.3%	0.1%	0.1%	5.4%	5.3%
Kapiti Coast District	27.9%	0.5%	56.3%	0.3%	0.1%	0.6%	6.9%	6.3%
Porirua City	24.3%	1.2%	57.7%	0.6%	0.6%	1.9%	6.0%	7.0%
Upper Hutt	27.4%	0.8%	56.3%	0.5%	0.2%	1.4%	6.6%	5.7%
Wellington City	30.0%	1.8%	49.6%	2.4%	0.8%	0.6%	5.0%	8.4%
<b>New Zealand</b>	<b>27.0%</b>	<b>1.1%</b>	<b>53.7%</b>	<b>1.0%</b>	<b>0.6%</b>	<b>1.7%</b>	<b>6.3%</b>	<b>7.5%</b>

## 2.7 Birthplace and Years Since Arrival in New Zealand

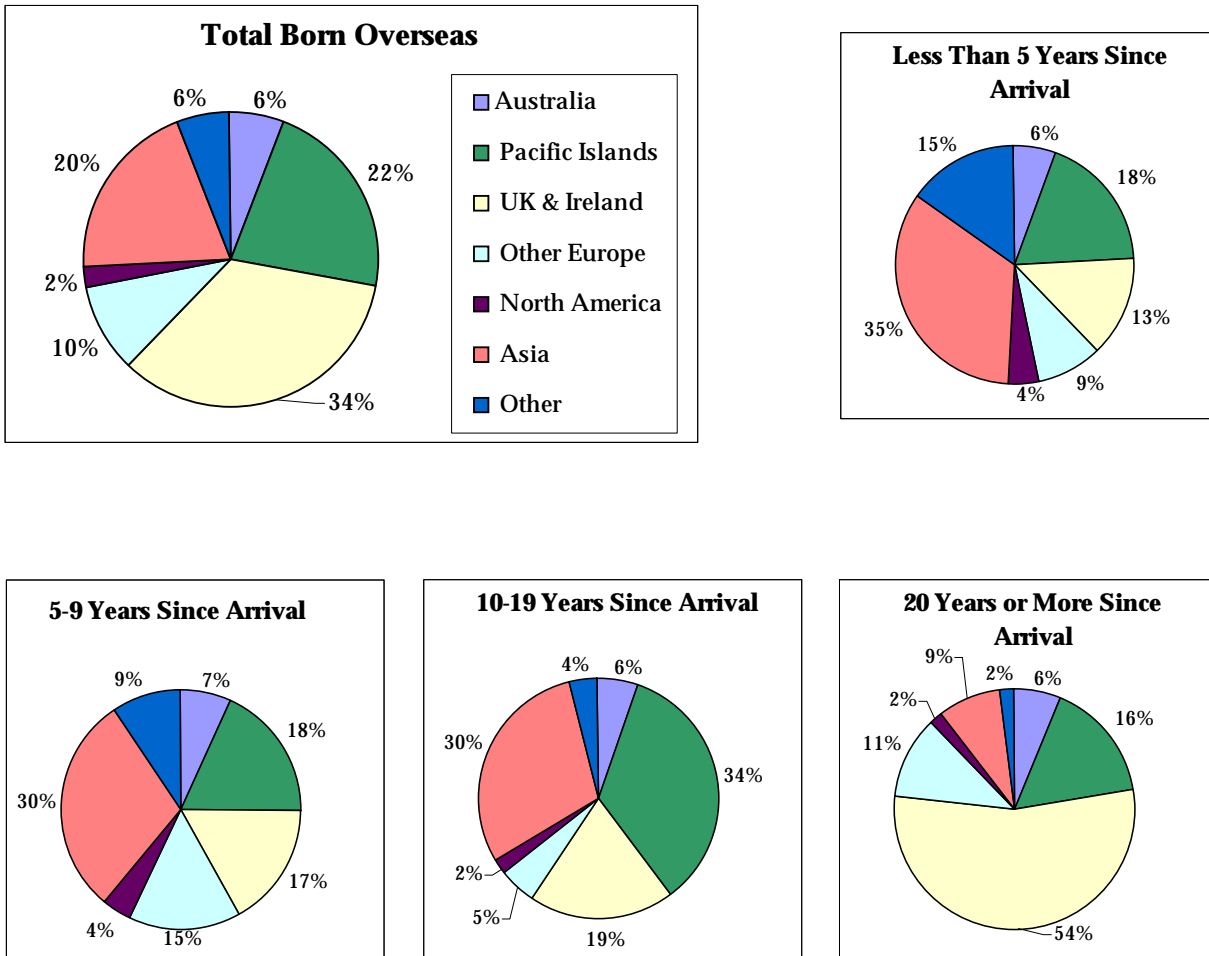
The immigration patterns to New Zealand have changed over the last twenty years. Figures 14 and 15 represent the residents of Hutt City that were born overseas. Over 20 years ago, the majority of immigrants to New Zealand were from the United Kingdom and Ireland. Within the last ten years the highest proportion of immigrants have come from Asia. Immigration from the Pacific Islands has always been one of the highest proportions but was exceptionally high 10 to 19 years ago.

Figure 14: Birthplace and Years Since Arrival in New Zealand

Years in NZ	Australia	Pacific Islands	United Kingdom & Ireland	Europe*	North America	Asia	Other	Total Overseas Born
Less than One Year	60	126	96	48	42	291	111	777
1 Year	51	153	117	69	36	249	84	756
2 Years	33	102	102	60	24	252	150	726
3 Years	33	123	72	57	24	171	126	606
4 Years	33	156	90	84	18	261	72	708
5-9 Years	132	345	315	282	72	561	177	1881
10-19 Years	201	1215	690	177	75	1065	138	3561
20 Years or More	552	1386	4671	957	141	753	165	8619
Not Elsewhere Included	69	477	156	60	21	159	66	1014
<b>Total</b>	<b>1164</b>	<b>4089</b>	<b>6312</b>	<b>1797</b>	<b>447</b>	<b>3756</b>	<b>1089</b>	<b>18651</b>

\* = excl. United Kingdom and Ireland

Figure 15: Birthplace and Years Since Arrival in New Zealand



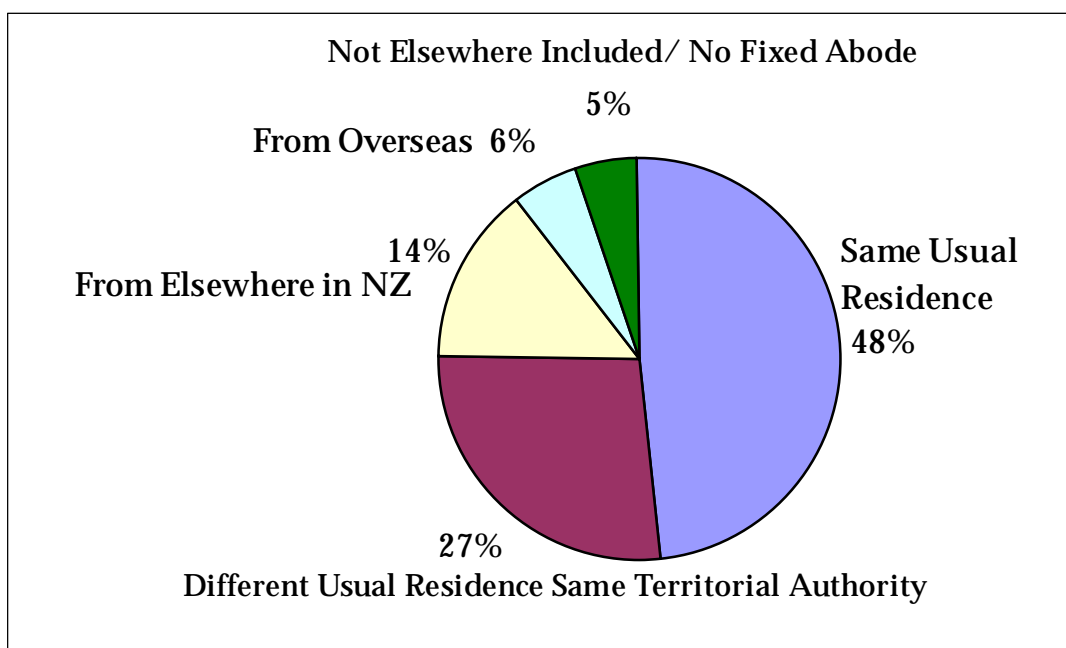
## 2.8 Migration

New Zealanders are a reasonably mobile group of people. Hutt City residents appear to be less mobile than the other Cities in this region. Figures 16 & 17 show the population of the Territorial Authority compared to where they lived five years ago. Only the population that is aged over five years old is included in the comparison.

Figure 16 shows that 75% of the 2001 Census population lived in Hutt City at the time of the 1996 Census. This is the highest percentage of the Territorial Authorities shown in Figure 17. Hutt City also has the highest percentage of the population that has moved to another residence but remained within the same Territorial Authority area.

In terms of migration within New Zealand, Hutt City experienced a net population decline of 2,556. However, when the international migration rates are included Hutt City's population gained a total of 2,289 new residents. This suggests that Hutt City's population decline is due to the number of births in Hutt City being less than the number of deaths and/or a decline in the population under five years old.

Figure 16: Lower Hutt City - Usual Residence 5 Years Ago



## 2.8 Migration

Figure 17: Usual Residence 5 Years Ago

Usual Residence Five Years Ago	Territorial Authority					Total New Zealand
	Lower Hutt City	Kapiti Coast District	Porirua City	Upper Hutt City	Wellington City	
Same Usual Residence	42,351	16,725	20,277	16,479	60,723	1,524,297
Different Usual Residence in same Territorial Authority	23,646	9,609	10,335	7,971	39,144	1,462,359
From elsewhere in New Zealand	12,708	9,744	7,293	6,291	28,971	0
From Overseas	4,845	1,545	2,460	1,365	15,060	244,098
Total People who moved to Territorial Authority	17,553	11,289	9,753	7,659	44,031	244,098
Not Elsewhere Included/No Fixed Abode <sup>(1)</sup>	4,386	2,202	2,475	1,590	9,288	235,722
Total Usually Resident Population Aged 5 and over	87,936	39,825	42,843	33,696	153,186	3,466,476
Total People Usually Resident in Territorial Authority in 1996 now living elsewhere in New Zealand <sup>(2)</sup>	15,261	6,360	8,364	6,972	24,270	0
<b>Net Population Gain or Loss for Area:</b>						
Within New Zealand <sup>(3)</sup>	-2,556	3,384	-1,068	-678	4,698	0
Total <sup>(4)</sup>	2,289	4,926	1,392	687	19,761	244,098

<sup>(1)</sup> Includes people who were usually resident in New Zealand in 1996 but whose usual residence five years ago was unable to be coded to territorial authority.

<sup>(2)</sup> Excludes New Zealand Not Further Defined (ie where usual residence five years ago could not be coded to territorial authority) and No Fixed Abode Five Years Ago.

<sup>(3)</sup> People who moved into the territorial authority from elsewhere in New Zealand minus people who moved from the territorial authority to elsewhere in New Zealand between censuses.

<sup>(4)</sup> People who moved into the territorial authority from overseas and elsewhere in New Zealand minus people who moved from the territorial authority to elsewhere in New Zealand between censuses.