

### 3. Social and Economic

#### 3.1 Average Personal Income

The average personal income information that Statistics New Zealand release as Census data includes everybody in the area over the age of fifteen. This is regardless of whether or not they are in the workforce or receive any income. It does not represent an average wage/salary.

Figure 18: Ten Territorial Authorities with the highest Personal Income  
Ranked by mean personal income.

	<b>Territorial Authority</b>	<b>Mean</b>	<b>Median</b>
1	Wellington City	\$34,695	\$26,964
2	Auckland City	\$30,522	\$22,318
3	North Shore City	\$30,172	\$23,348
4	Chatham Islands District	\$29,013	\$18,032
5	Queenstown-Lakes District	\$27,802	\$23,004
<b>6</b>	<b>Lower Hutt City</b>	<b>\$27,716</b>	<b>\$21,962</b>
7	Porirua City	\$27,368	\$20,517
8	Franklin District	\$27,364	\$21,313
9	Southland District	\$27,241	\$20,410
10	Matamata-Piako District	\$27,175	\$20,100

Figure 18 shows that Hutt City has the sixth highest mean personal income for territorial authority areas in New Zealand. At \$27,716, this is above the New Zealand mean of \$25,357.

However, as Figure 19 shows, there is considerable variation across different areas of Hutt City. Eastbourne (\$41,801) and Woburn North (\$41,271) had the highest personal income. Taita North (\$17,994) and Naenae North (\$19,304) have the lowest personal income.

Figure 19: Average Personal Income

	Mean	Median
<b>Lower Hutt City</b>	<b>\$27,716</b>	<b>\$21,962</b>
<b>Wainuiomata Ward</b>	<b>\$22,300</b>	<b>\$19,347</b>
1. Glendale	\$21,029	\$19,152
2. Parkway	\$23,459	\$21,176
3. Fernlea	\$22,545	\$19,771
4. Arakura	\$21,435	\$18,750
5. Homedale West	\$22,304	\$19,218
6. Homedale East	\$23,108	\$19,489
7. Pencarrow	\$31,925	\$25,569
<b>Northern Ward</b>	<b>\$22,164</b>	<b>\$19,271</b>
<i>Stokes Valley</i>	<i>\$24,388</i>	<i>\$22,188</i>
8. Tawhai	\$25,835	\$23,183
9. Holborn	\$24,581	\$23,521
10. Delaney	\$20,633	\$16,338
11. Manuka	\$28,974	\$26,285
12. Taita North	\$17,994	\$15,222
13. Taita South	\$20,184	\$16,514
<b>Central Ward</b>	<b>\$30,393</b>	<b>\$23,438</b>
14. Avalon East	\$21,512	\$16,030
15. Avalon West	\$26,086	\$20,787
16. Boulcott	\$31,722	\$23,788
17. Epuni West	\$28,457	\$21,076
18. Waterloo West	\$34,580	\$26,575
19. Hutt Central	\$37,372	\$25,915
20. Melling	\$28,281	\$23,611
21. Alicetown	\$30,324	\$26,069
22. Woburn North	\$41,271	\$28,473
<b>Eastern Ward</b>	<b>\$23,508</b>	<b>\$18,453</b>
23. Naenae North	\$19,304	\$15,042
24. Naenae South	\$21,541	\$16,821
25. Epuni East	\$27,521	\$21,816
26. Waterloo East	\$30,116	\$23,837
27. Waiwhetu North	\$24,140	\$20,715
<b>Western Ward</b>	<b>\$34,441</b>	<b>\$30,114</b>
28. Normandale	\$35,420	\$30,951
29. Maungaraki	\$33,543	\$29,676
30. Belmont	\$36,449	\$30,182
31. Kelson	\$31,341	\$29,688
32. Haywards-Manor Park	\$24,955	\$19,762
<b>Harbour Ward</b>	<b>\$30,642</b>	<b>\$24,643</b>
33. Waiwhetu South	\$24,462	\$20,720
34. Gracefield	\$25,188	\$25,228
35. Moera	\$20,635	\$17,026
36. Woburn South	\$28,414	\$24,265
37. Korokoro	\$35,166	\$28,803
<i>Petone</i>	<i>\$26,885</i>	<i>\$24,167</i>
38. Petone Central	\$29,978	\$25,683
39. Esplanade	\$26,447	\$21,490
40. Wilford	\$26,732	\$21,795
41. Eastbourne	\$41,801	\$29,782
Kapiti Coast District	\$25,218	\$17,912
Porirua City	\$27,368	\$20,517
Upper Hutt	\$26,323	\$20,966
Wellington City	\$34,695	\$26,964
<b>New Zealand</b>	<b>\$25,357</b>	<b>\$18,545</b>

### 3.2 Average Household Income

At \$54,081 Hutt City has a significantly higher mean household income than the New Zealand mean of \$49,343. Figure 20 shows that Hutt City had the seventh highest mean household income of all the territorial authority areas in New Zealand.

Figure 20: Ten Territorial Authorities with the highest Household Income

Territorial Authority	Mean	Median
1. Wellington City	\$67,898	\$59,410
2. Auckland City	\$61,860	\$51,094
3. North Shore City	\$61,685	\$53,355
4. Porirua City	\$58,222	\$49,363
5. Manukau City	\$55,968	\$48,441
6. Franklin District	\$55,495	\$48,223
7. <b>Lower Hutt City</b>	<b>\$54,081</b>	<b>\$45,667</b>
8. Selwyn District	\$53,882	\$47,170
9. Waitakere City	\$53,274	\$46,426
10. Papakura District	\$53,193	\$45,821

There is a great disparity in terms of average household income over the different areas of Hutt City. There are areas both well above and well below the New Zealand average. Figure 21 shows the locations of both extremes across Hutt City.

Figure 22 shows that Woburn North has the highest mean household income at \$83,669. Eastbourne, Normandale, and Belmont all have high average incomes of around \$75,000. Gracefield reported the lowest income (\$27,136), but also had the highest percentage of one-person households. The next lowest is significantly higher, being Taita North at \$35,971.

Figure 21: Mean Household Income

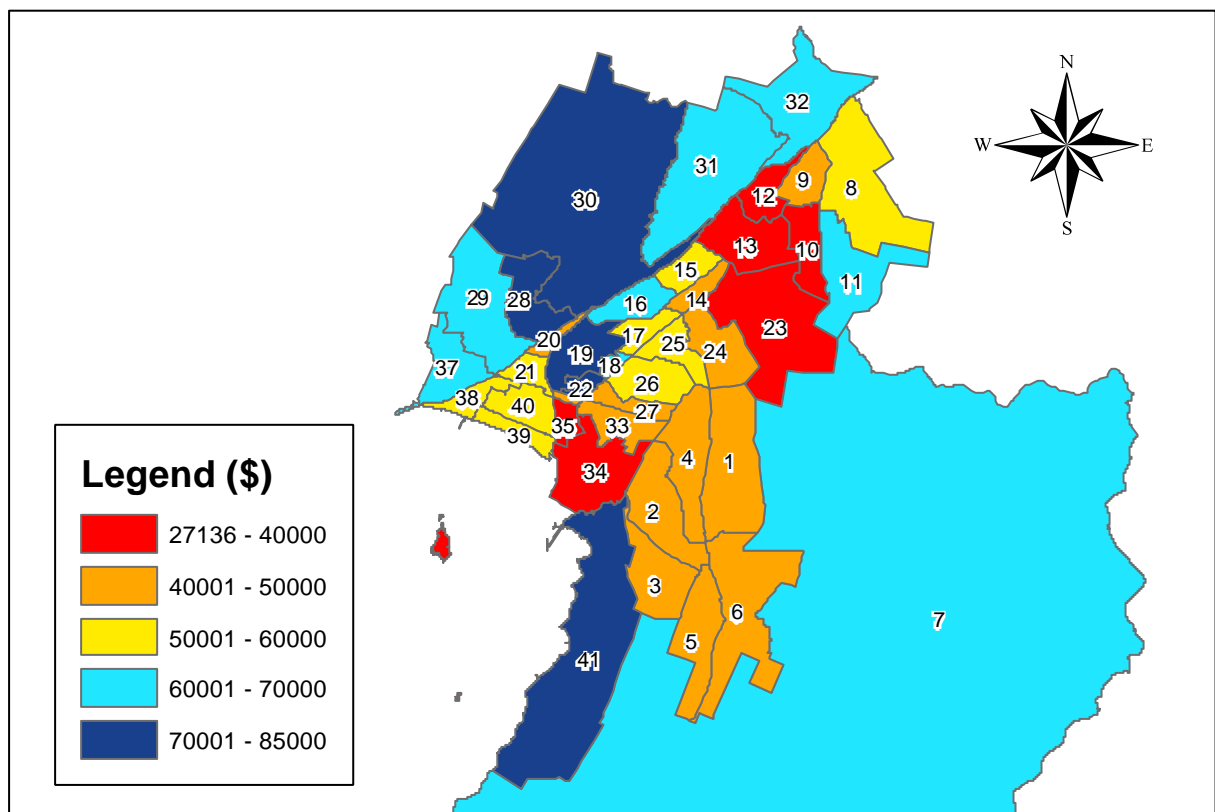


Figure 22: Average Household Income

	Mean	Median
<b>Lower Hutt City</b>	<b>\$54,081</b>	<b>\$45,667</b>
<b>Wainuiomata Ward</b>	<b>\$45,008</b>	<b>\$38,750</b>
1. Glendale	\$43,939	\$40,688
2. Parkway	\$46,513	\$42,281
3. Fernlea	\$47,890	\$41,913
4. Arakura	\$43,123	\$37,151
5. Homedale West	\$43,537	\$38,105
6. Homedale East	\$46,742	\$39,951
7. Pencarrow	\$63,001	\$56,155
<b>Northern Ward</b>	<b>\$44,508</b>	<b>\$37,750</b>
<i>Stokes Valley</i>	<i>\$49,372</i>	<i>\$45,001</i>
8. Tawhai	\$51,580	\$46,172
9. Holborn	\$48,198	\$44,013
10. Delaney	\$39,777	\$33,457
11. Manuka	\$61,896	\$57,914
12. Taita North	\$35,941	\$29,930
13. Taita South	\$39,147	\$32,635
<b>Central Ward</b>	<b>\$58,932</b>	<b>\$49,830</b>
14. Avalon East	\$40,952	\$31,137
15. Avalon West	\$50,439	\$40,965
16. Boulcott	\$60,707	\$50,604
17. Epuni West	\$51,835	\$41,024
18. Waterloo West	\$69,276	\$59,260
19. Hutt Central	\$73,300	\$63,681
20. Melling	\$49,768	\$41,251
21. Alicetown	\$56,221	\$47,971
22. Woburn North	\$83,669	\$80,368
<b>Eastern Ward</b>	<b>\$45,523</b>	<b>\$36,548</b>
23. Naenae North	\$36,509	\$28,379
24. Naenae South	\$42,664	\$33,991
25. Epuni East	\$51,691	\$43,637
26. Waterloo East	\$57,693	\$51,166
27. Waiwhetu North	\$46,064	\$41,059
<b>Western Ward</b>	<b>\$70,867</b>	<b>\$65,591</b>
28. Normandale	\$75,180	\$68,561
29. Maungaraki	\$67,442	\$61,586
30. Belmont	\$74,563	\$68,253
31. Kelson	\$64,182	\$59,769
32. Haywards-Manor Pk	\$60,946	\$54,001
<b>Harbour Ward</b>	<b>\$57,776</b>	<b>\$48,750</b>
33. Waiwhetu South	\$44,246	\$35,195
34. Gracefield	\$27,136	\$22,501
35. Moera	\$37,237	\$29,667
36. Woburn South	\$49,151	\$39,211
37. Korokoro	\$69,187	\$63,117
<i>Petone</i>	<i>\$52,039</i>	<i>\$45,001</i>
38. Petone Central	\$54,100	\$48,549
39. Esplanade	\$50,809	\$42,090
40. Wilford	\$50,221	\$42,201
41. Eastbourne	\$75,196	\$66,789
Kapiti Coast District	\$44,586	\$33,553
Porirua City	\$58,222	\$49,363
Upper Hutt	\$51,448	\$44,320
Wellington City	\$67,898	\$59,410
<b>New Zealand</b>	<b>\$49,343</b>	<b>\$39,588</b>

### 3.3 Sources of Personal Income

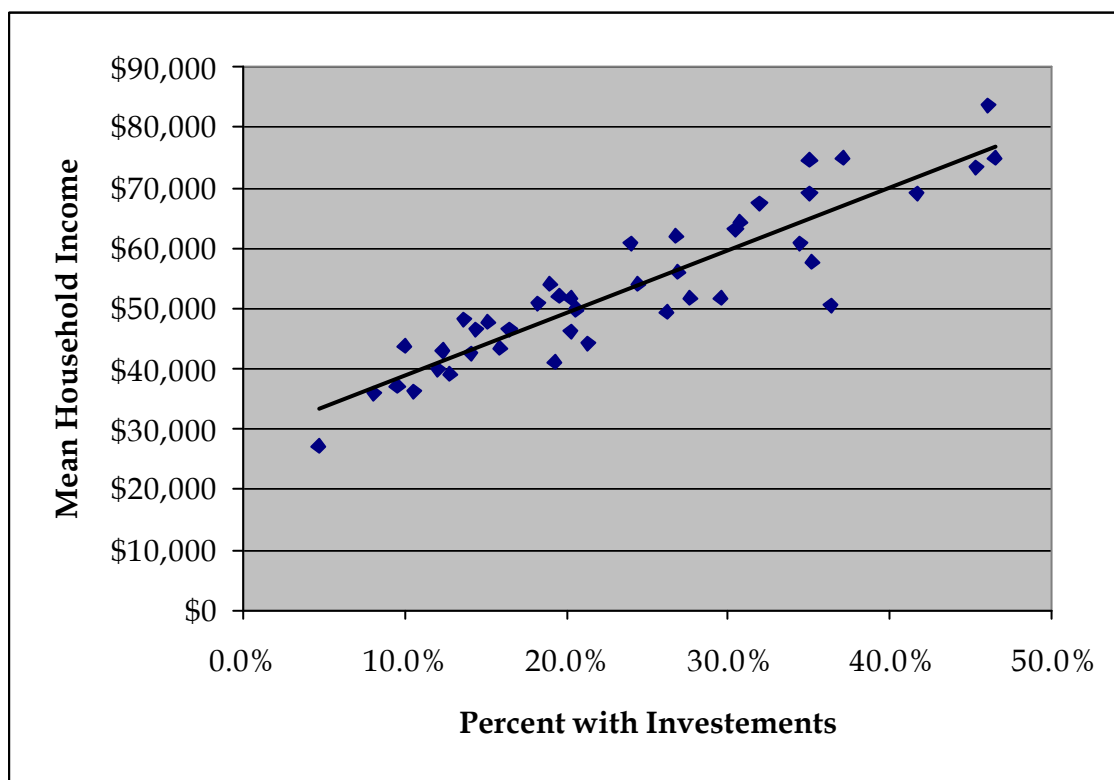
The Census question asked for people to identify all their sources of income. The percentages are calculated on the population of the area rather than on the number of responses given. This means that the percentages in Figure 24 will not add up to 100%, as many people receive income from more than one source.

The rural nature of Pencarrow would explain why Pencarrow has a high percentage in the 'self employment or business' category. Belmont, Woburn North, and Eastbourne also have a high percentage in the 'self employment or business' category. The area units with the highest average household income also have the highest percentages in the 'interest, dividends, rent, other investments' category; shown in Figure 23.

Taita North had the highest percentage in the category 'Community Wage – Job Seeker'. In that category, Delaney, Taita South, Naenae, and Arakura also had high percentages. When compared against the New Zealand totals, Hutt City had a lower percentage in the job seeker category and a higher percentage receiving the 'Domestic Purposes Benefit'.

Hutt Central and Avalon West both had a high percentage that receives Superannuation. These two areas also had the highest percentage of the population aged over 65 years.

Figure 23: Investments and Average Household Income



3.3 Sources of Personal Income

Figure 24: Sources of Personal Income (Total Response)

	No Sources of Income	Wages, Salary, Commissions, Bonuses etc Paid by Employer	Self-employment or Business	Interest, Dividends, Rent, Other Investments	Regular Payments from ACC or a Private Work Accident Insurer	New Zealand Superannuation or Veterans Pension	Other Superannuation, Pensions, Annuities (Excluding War Pension)
<b>Lower Hutt City</b>	<b>5.2%</b>	<b>58.3%</b>	<b>12.2%</b>	<b>24.5%</b>	<b>1.9%</b>	<b>13.0%</b>	<b>4.0%</b>
<b>Wainuiomata Ward</b>	<b>6.2%</b>	<b>59.8%</b>	<b>8.7%</b>	<b>14.3%</b>	<b>2.4%</b>	<b>11.1%</b>	<b>3.2%</b>
1. Glendale	6.6%	59.8%	6.6%	10.0%	2.0%	7.8%	2.8%
2. Parkway	6.5%	63.2%	8.6%	14.4%	2.8%	10.2%	2.5%
3. Fernlea	6.5%	61.4%	9.7%	15.2%	2.0%	12.1%	3.4%
4. Arakura	6.3%	58.9%	7.8%	12.4%	2.6%	10.2%	2.8%
5. Homedale West	5.4%	56.0%	7.7%	15.8%	2.6%	15.5%	4.8%
6. Homedale East	5.8%	59.2%	9.4%	16.4%	2.3%	12.5%	3.6%
7. Pencarrow	5.1%	61.9%	25.4%	30.5%	4.2%	7.6%	1.7%
<b>Northern Ward</b>	<b>5.5%</b>	<b>56.0%</b>	<b>9.3%</b>	<b>15.2%</b>	<b>2.6%</b>	<b>11.8%</b>	<b>2.8%</b>
<i>Stokes Valley</i>	5.5%	60.2%	11.2%	18.1%	3.0%	10.5%	2.9%
8. Tawhai	4.9%	62.7%	12.9%	20.3%	3.6%	11.0%	2.9%
9. Holborn	6.1%	64.8%	9.6%	13.6%	3.5%	8.7%	1.6%
10. Delaney	5.8%	48.8%	7.4%	12.1%	2.2%	10.8%	2.9%
11. Manuka	5.7%	64.9%	14.7%	26.8%	2.7%	11.3%	4.1%
12. Taita North	5.3%	47.3%	5.1%	8.0%	1.9%	12.8%	2.5%
13. Taita South	5.4%	50.5%	7.0%	12.8%	2.1%	14.8%	3.1%
<b>Central Ward</b>	<b>4.7%</b>	<b>54.8%</b>	<b>14.6%</b>	<b>34.3%</b>	<b>1.7%</b>	<b>18.1%</b>	<b>5.9%</b>
14. Avalon East	5.7%	47.8%	10.2%	19.2%	1.9%	16.8%	4.3%
15. Avalon West	4.3%	49.0%	12.5%	36.3%	1.7%	26.0%	8.4%
16. Boulcott	4.7%	54.6%	14.5%	34.5%	1.9%	20.1%	4.5%
17. Epuni West	4.1%	55.6%	13.0%	29.6%	1.7%	16.2%	5.8%
18. Waterloo West	5.6%	61.8%	15.0%	41.6%	1.3%	14.2%	7.3%
19. Hutt Central	5.5%	51.1%	18.5%	45.3%	1.0%	22.3%	7.6%
20. Melling	2.8%	63.8%	13.5%	20.6%	3.5%	7.1%	0.7%
21. Alicetown	2.9%	66.8%	13.7%	27.0%	1.9%	9.8%	3.1%
22. Woburn North	5.3%	60.8%	20.5%	46.0%	1.5%	13.4%	6.5%
<b>Eastern Ward</b>	<b>5.5%</b>	<b>55.0%</b>	<b>9.3%</b>	<b>21.6%</b>	<b>1.9%</b>	<b>14.2%</b>	<b>3.9%</b>
23. Naenae North	5.7%	47.6%	5.7%	10.5%	2.4%	15.9%	3.5%
24. Naenae South	5.9%	53.2%	7.7%	14.2%	1.8%	10.8%	2.2%
25. Epuni East	5.7%	56.2%	11.7%	27.7%	1.5%	13.5%	4.4%
26. Waterloo East	5.0%	62.1%	12.5%	35.2%	2.0%	15.7%	5.0%
27. Waiwhetu North	5.5%	57.7%	9.6%	20.3%	1.4%	14.2%	4.9%
<b>Western Ward</b>	<b>5.2%</b>	<b>69.8%</b>	<b>16.5%</b>	<b>33.2%</b>	<b>1.6%</b>	<b>7.0%</b>	<b>3.1%</b>
28. Normandale	5.3%	70.9%	18.4%	37.0%	0.9%	7.3%	3.6%
29. Maungaraki	4.2%	69.7%	12.6%	32.0%	1.8%	7.7%	3.3%
30. Belmont	6.0%	68.3%	21.2%	35.0%	1.4%	6.7%	3.5%
31. Kelson	5.6%	73.1%	14.8%	30.7%	2.1%	4.9%	2.1%
32. Haywards-Manor Park	4.8%	56.7%	11.5%	24.0%	1.9%	16.3%	2.9%
<b>Harbour Ward</b>	<b>4.4%</b>	<b>57.7%</b>	<b>14.8%</b>	<b>27.5%</b>	<b>1.6%</b>	<b>13.2%</b>	<b>4.3%</b>
33. Waiwhetu South	3.7%	58.6%	9.5%	21.3%	1.2%	15.2%	4.9%
34. Gracefield	9.5%	47.6%	9.5%	4.8%	4.8%	4.8%	4.8%
35. Moera	5.1%	53.4%	7.1%	9.5%	2.0%	10.5%	1.7%
36. Woburn South	5.4%	58.6%	9.0%	26.1%	2.7%	15.3%	4.5%
37. Korokoro	3.5%	65.9%	19.0%	35.0%	2.0%	10.2%	3.5%
<i>Petone</i>	4.5%	58.3%	12.1%	19.5%	1.7%	10.8%	2.7%
38. Petone Central	4.1%	67.0%	14.0%	19.0%	0.9%	6.3%	1.8%
39. Esplanade	4.0%	57.6%	11.5%	18.2%	1.8%	11.9%	2.9%
40. Wilford	4.9%	56.7%	12.1%	20.5%	1.9%	11.1%	2.9%
41. Eastbourne	4.6%	55.7%	23.3%	46.4%	1.1%	17.4%	7.3%
Kapiti Coast District	4.1%	44.6%	15.7%	30.5%	1.9%	27.0%	8.1%
Porirua City	6.1%	56.5%	11.3%	19.4%	1.7%	8.6%	3.0%
Upper Hutt	5.4%	58.8%	11.6%	24.9%	2.5%	14.8%	4.6%
Wellington City	4.3%	64.6%	15.1%	33.0%	1.1%	9.4%	3.8%
<b>New Zealand</b>	<b>5.2%</b>	<b>53.2%</b>	<b>15.7%</b>	<b>24.3%</b>	<b>1.5%</b>	<b>14.5%</b>	<b>3.1%</b>

Figure 24: Sources of Personal Income (Total Response) continued

	Community Wage - Job Seeker	Community Wage - Sickness Benefit	Domestic Purposes Benefit	Invalids Benefit	Student Allowance	Other Government Income Source (Including War Pension)	Other Sources of Income	Income Sources Not Stated
<b>Lower Hutt City</b>	<b>5.9%</b>	<b>1.9%</b>	<b>4.0%</b>	<b>1.9%</b>	<b>2.1%</b>	<b>3.4%</b>	<b>1.6%</b>	<b>4.5%</b>
<b>Wainuiomata Ward</b>	<b>7.1%</b>	<b>2.1%</b>	<b>5.6%</b>	<b>1.8%</b>	<b>2.2%</b>	<b>4.1%</b>	<b>1.5%</b>	<b>4.4%</b>
1. Glendale	8.3%	2.6%	7.1%	2.8%	2.6%	4.2%	1.6%	5.4%
2. Parkway	5.5%	1.7%	5.7%	1.3%	2.1%	4.2%	1.4%	3.0%
3. Fernlea	7.1%	2.0%	5.3%	1.2%	2.8%	4.0%	2.0%	3.0%
4. Arakura	9.3%	2.1%	6.3%	1.6%	2.3%	4.2%	1.3%	4.7%
5. Homedale West	6.7%	2.4%	4.8%	1.9%	2.4%	4.0%	1.4%	4.8%
6. Homedale East	6.3%	1.9%	4.7%	1.8%	1.6%	3.9%	1.5%	5.0%
7. Pencarrow	3.4%	0.0%	1.7%	0.8%	0.8%	2.5%	0.0%	4.2%
<b>Northern Ward</b>	<b>7.7%</b>	<b>2.5%</b>	<b>5.5%</b>	<b>2.3%</b>	<b>2.1%</b>	<b>4.1%</b>	<b>1.7%</b>	<b>6.1%</b>
<i>Stokes Valley</i>	6.2%	2.0%	4.7%	1.7%	1.9%	3.5%	1.9%	5.2%
8. Tawhai	4.7%	2.0%	4.5%	1.1%	1.8%	3.6%	1.9%	3.6%
9. Holborn	7.1%	2.2%	5.3%	1.2%	1.8%	4.3%	2.0%	3.7%
10. Delaney	9.9%	2.7%	7.2%	3.8%	2.2%	3.8%	1.6%	10.3%
11. Manuka	3.2%	0.7%	1.4%	0.7%	1.6%	2.0%	1.8%	3.4%
12. Taita North	10.7%	3.0%	7.0%	3.6%	2.5%	6.1%	1.2%	9.1%
13. Taita South	9.7%	4.0%	6.9%	2.9%	2.3%	4.3%	1.9%	6.3%
<b>Central Ward</b>	<b>4.3%</b>	<b>1.6%</b>	<b>2.6%</b>	<b>2.0%</b>	<b>2.0%</b>	<b>2.7%</b>	<b>1.4%</b>	<b>3.5%</b>
14. Avalon East	7.6%	3.3%	4.7%	5.4%	2.6%	4.2%	1.6%	4.5%
15. Avalon West	3.7%	1.4%	2.7%	1.6%	1.6%	2.5%	1.0%	4.1%
16. Boulcott	3.9%	1.6%	2.4%	1.1%	1.8%	2.7%	1.1%	3.4%
17. Epuni West	5.0%	1.9%	3.6%	3.3%	3.0%	3.5%	1.3%	3.6%
18. Waterloo West	3.0%	1.3%	1.7%	0.0%	2.6%	1.7%	0.9%	2.6%
19. Hutt Central	2.4%	0.8%	0.9%	0.9%	1.3%	2.3%	1.9%	2.9%
20. Melling	7.1%	1.4%	4.3%	0.7%	2.1%	3.5%	1.4%	6.4%
21. Alicetown	5.6%	1.9%	3.1%	1.7%	2.3%	1.7%	1.5%	3.3%
22. Woburn North	2.7%	0.9%	0.9%	0.9%	1.2%	2.1%	2.4%	2.1%
<b>Eastern Ward</b>	<b>7.4%</b>	<b>2.4%</b>	<b>5.3%</b>	<b>2.6%</b>	<b>2.1%</b>	<b>3.9%</b>	<b>1.5%</b>	<b>4.8%</b>
23. Naenae North	9.6%	3.0%	7.7%	3.2%	2.0%	4.8%	0.8%	7.0%
24. Naenae South	9.4%	2.9%	7.6%	4.1%	2.6%	4.9%	1.5%	5.9%
25. Epuni East	6.2%	2.4%	3.8%	2.4%	2.0%	2.9%	1.7%	4.0%
26. Waterloo East	4.5%	1.6%	2.4%	1.0%	1.6%	2.7%	1.7%	2.3%
27. Waiwhetu North	6.4%	2.0%	4.3%	2.0%	2.3%	4.9%	2.3%	4.6%
<b>Western Ward</b>	<b>2.7%</b>	<b>0.6%</b>	<b>1.6%</b>	<b>0.6%</b>	<b>1.9%</b>	<b>2.1%</b>	<b>1.7%</b>	<b>2.9%</b>
28. Normandale	2.8%	0.4%	1.5%	0.2%	1.7%	1.3%	2.4%	2.6%
29. Maungaraki	2.8%	0.8%	1.5%	0.8%	2.1%	2.1%	1.2%	3.9%
30. Belmont	2.6%	0.8%	1.4%	0.2%	1.9%	2.2%	1.9%	2.2%
31. Kelson	2.4%	0.5%	2.1%	0.8%	2.0%	2.1%	1.5%	2.6%
32. Haywards-Manor Park	3.8%	0.0%	1.9%	3.8%	1.9%	4.8%	1.0%	3.8%
<b>Harbour Ward</b>	<b>5.8%</b>	<b>1.7%</b>	<b>3.3%</b>	<b>1.7%</b>	<b>2.6%</b>	<b>3.2%</b>	<b>1.9%</b>	<b>5.3%</b>
33. Waiwhetu South	7.2%	2.6%	4.9%	1.9%	3.0%	3.5%	2.1%	5.1%
34. Gracefield	4.8%	0.0%	4.8%	4.8%	0.0%	0.0%	0.0%	23.8%
35. Moera	8.8%	2.7%	7.3%	3.2%	3.4%	5.4%	1.5%	7.8%
36. Woburn South	5.4%	1.8%	3.6%	1.8%	4.5%	4.5%	2.7%	1.8%
37. Korokoro	5.5%	0.6%	0.9%	0.3%	2.0%	1.2%	2.0%	4.7%
<i>Petone</i>	7.2%	2.1%	3.9%	2.4%	3.3%	4.1%	1.8%	6.3%
38. Petone Central	5.4%	2.7%	3.6%	0.9%	3.6%	4.1%	1.8%	5.9%
39. Esplanade	7.8%	2.3%	3.7%	2.4%	3.8%	3.8%	1.5%	7.0%
40. Wilford	7.3%	1.8%	4.1%	2.6%	2.9%	4.4%	2.0%	5.9%
41. Eastbourne	2.3%	0.6%	1.1%	0.6%	1.2%	1.5%	2.2%	3.2%
Kapiti Coast District	4.6%	1.4%	3.9%	1.9%	1.4%	3.9%	1.6%	4.5%
Porirua City	8.2%	1.9%	5.6%	2.3%	2.5%	4.2%	1.5%	6.4%
Upper Hutt	5.0%	1.3%	3.4%	2.1%	2.1%	3.6%	1.8%	4.0%
Wellington City	6.2%	1.2%	1.8%	1.3%	4.2%	2.6%	3.0%	5.7%
<b>New Zealand</b>	<b>6.2%</b>	<b>1.9%</b>	<b>3.7%</b>	<b>2.3%</b>	<b>2.7%</b>	<b>3.8%</b>	<b>1.9%</b>	<b>6.2%</b>

### 3.4 Participation in Unpaid Activities

The participation in unpaid activities question in the Census also allowed for multiple responses to be given.

The two area units with highest average household income were also the two area units with the highest participation in 'other helping or voluntary work for or through any organisation, group or marae'. However, as Figure 25 shows there is not a strong correlation (although there is slight upward trend) between the household income and participation in voluntary work.

Figure 26 shows that most unpaid work is carried out within the person's own household. 'Household Work ... for own household' was by far the common form of unpaid activity undertaken.

Figure 25: Household Income and Participation in Voluntary Work

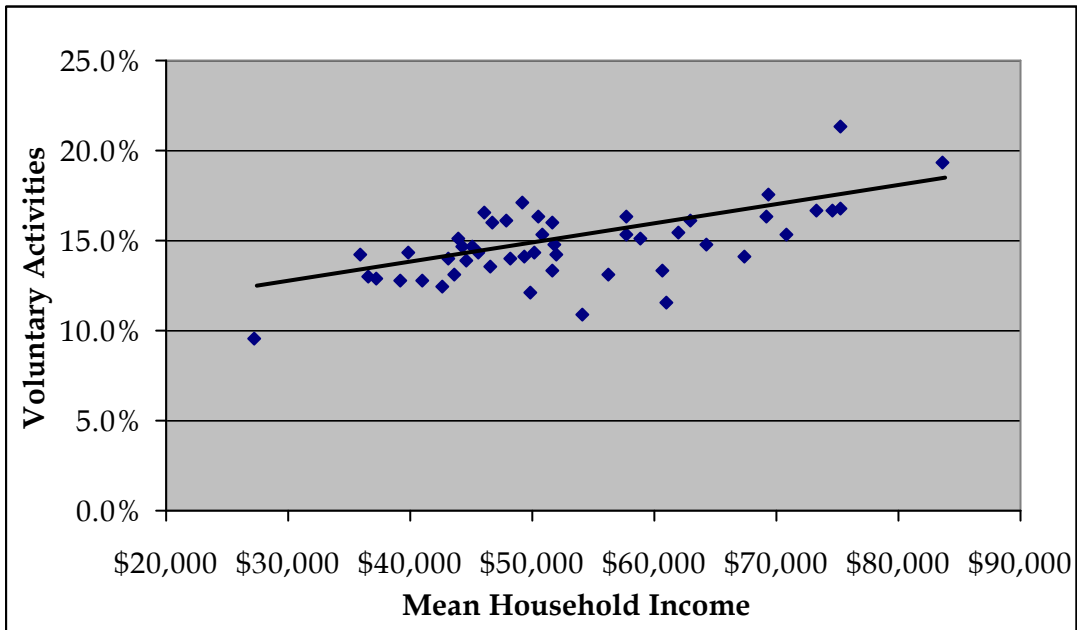


Figure 26: Participation in Unpaid Activities (Total Response)

	No Activities	Household work, cooking, repairs, gardening, etc, for own household	Looking after a child who is a member of own household	Looking after a member of own household who is ill or has a disability	Looking after a child who does not live in own household	Helping someone who is ill or has a disability who does not live in own household	Other helping or voluntary work for or through any organisation, group /marae	Studying for 20 hours or more per week	Studying for less than 20 hours per week	Not stated
<b>Lower Hutt City</b>	<b>8.4%</b>	<b>81.0%</b>	<b>32.0%</b>	<b>7.4%</b>	<b>16.1%</b>	<b>7.8%</b>	<b>15.0%</b>	<b>6.9%</b>	<b>6.6%</b>	<b>6.8%</b>
<b>Wainuiomata Ward</b>	<b>8.1%</b>	<b>81.6%</b>	<b>36.4%</b>	<b>8.7%</b>	<b>18.6%</b>	<b>8.1%</b>	<b>14.7%</b>	<b>6.9%</b>	<b>5.5%</b>	<b>6.7%</b>
1. Glendale	8.9%	79.7%	38.3%	10.3%	21.4%	7.9%	15.1%	7.1%	5.5%	7.7%
2. Parkway	8.1%	83.3%	39.2%	7.8%	18.5%	8.3%	13.6%	7.4%	5.4%	5.1%
3. Fernlea	7.5%	84.0%	34.5%	9.7%	18.6%	7.5%	16.2%	6.5%	5.9%	5.3%
4. Arakura	8.9%	79.8%	35.9%	8.3%	18.4%	7.5%	14.0%	6.8%	4.6%	7.2%
5. Homedale West	9.3%	80.0%	31.7%	8.5%	17.0%	8.2%	13.1%	7.2%	5.9%	7.5%
6. Homedale East	6.2%	82.7%	38.5%	8.5%	17.9%	9.0%	16.0%	6.3%	5.5%	6.9%
7. Pencarrow	7.6%	84.7%	29.7%	3.4%	15.3%	8.5%	16.1%	5.9%	6.8%	5.9%
<b>Northern Ward</b>	<b>9.7%</b>	<b>77.3%</b>	<b>32.9%</b>	<b>8.6%</b>	<b>16.7%</b>	<b>7.9%</b>	<b>13.9%</b>	<b>6.3%</b>	<b>5.5%</b>	<b>8.5%</b>
<i>Stokes Valley</i>	7.9%	81.2%	34.5%	7.8%	17.2%	8.2%	14.1%	6.4%	5.9%	6.8%
8. Tawhai	8.6%	83.0%	35.1%	7.9%	17.0%	7.9%	13.3%	6.4%	5.7%	4.6%
9. Holborn	9.3%	81.5%	36.2%	8.7%	17.9%	8.5%	14.0%	6.1%	5.7%	5.3%
10. Delaney	7.4%	75.0%	35.4%	8.9%	17.0%	8.5%	14.3%	6.3%	6.5%	12.5%
11. Manuka	5.9%	85.3%	30.2%	5.4%	17.0%	7.9%	15.4%	6.8%	5.9%	5.4%
12. Taita North	15.2%	67.0%	31.2%	10.4%	16.0%	7.4%	14.3%	5.9%	4.3%	12.5%
13. Taita South	10.3%	74.7%	29.4%	9.1%	15.7%	7.3%	12.8%	6.5%	5.0%	10.1%
<b>Central Ward</b>	<b>9.7%</b>	<b>80.2%</b>	<b>28.8%</b>	<b>6.5%</b>	<b>14.9%</b>	<b>7.6%</b>	<b>15.2%</b>	<b>6.9%</b>	<b>6.7%</b>	<b>6.3%</b>
14. Avalon East	11.3%	74.7%	28.6%	6.9%	14.4%	5.9%	12.8%	7.5%	6.2%	8.1%
15. Avalon West	11.0%	78.4%	24.0%	5.7%	14.4%	7.8%	16.3%	5.7%	5.2%	7.1%
16. Boulcott	10.6%	80.2%	31.6%	6.8%	15.6%	6.6%	13.4%	6.4%	5.8%	6.1%
17. Epuni West	9.9%	79.3%	27.5%	7.2%	15.2%	7.7%	14.8%	6.6%	6.9%	6.8%
18. Waterloo West	7.3%	85.8%	30.9%	5.2%	15.5%	8.6%	17.6%	7.3%	8.2%	4.3%
19. Hutt Central	11.3%	79.2%	28.3%	5.9%	12.8%	8.1%	16.7%	7.8%	7.2%	5.9%
20. Melling	7.1%	82.3%	26.2%	7.8%	19.1%	11.3%	12.1%	7.1%	5.7%	7.8%
21. Alicetown	7.1%	83.8%	31.5%	6.4%	17.2%	7.5%	13.1%	6.0%	7.3%	5.6%
22. Woburn North	4.5%	87.8%	33.5%	7.7%	14.8%	8.3%	19.3%	7.7%	8.9%	3.6%
<b>Eastern Ward</b>	<b>9.5%</b>	<b>79.0%</b>	<b>31.1%</b>	<b>7.7%</b>	<b>16.0%</b>	<b>8.0%</b>	<b>14.3%</b>	<b>6.5%</b>	<b>6.4%</b>	<b>7.6%</b>
23. Naenae North	12.6%	71.9%	29.2%	8.1%	15.4%	7.5%	13.0%	5.9%	6.2%	10.8%
24. Naenae South	10.5%	77.3%	31.6%	8.5%	16.8%	7.1%	12.5%	6.9%	6.0%	8.3%
25. Epuni East	7.8%	82.4%	30.6%	6.8%	15.5%	9.5%	16.0%	6.2%	6.6%	6.4%
26. Waterloo East	6.7%	85.3%	32.0%	6.9%	16.2%	8.4%	15.3%	7.0%	6.6%	4.2%
27. Waiwhetu North	9.0%	79.1%	33.3%	9.3%	16.8%	7.5%	16.5%	6.4%	7.5%	8.4%
<b>Western Ward</b>	<b>5.3%</b>	<b>87.6%</b>	<b>34.3%</b>	<b>5.7%</b>	<b>15.1%</b>	<b>6.7%</b>	<b>15.4%</b>	<b>7.8%</b>	<b>8.2%</b>	<b>3.9%</b>
28. Normandale	4.5%	88.2%	31.6%	5.3%	15.6%	5.5%	16.7%	9.6%	8.6%	3.4%
29. Maungaraki	5.1%	86.1%	29.7%	6.0%	14.0%	6.6%	14.1%	6.7%	8.7%	5.5%
30. Belmont	4.3%	89.7%	39.3%	5.8%	15.5%	8.0%	16.7%	8.0%	8.2%	2.8%
31. Kelson	4.7%	89.0%	37.6%	5.5%	15.3%	6.1%	14.8%	7.8%	7.3%	3.5%
32. Haywards-Manor Pk	21.2%	73.1%	26.0%	4.8%	16.3%	7.7%	11.5%	5.8%	7.7%	4.8%
<b>Harbour Ward</b>	<b>7.4%</b>	<b>81.6%</b>	<b>29.8%</b>	<b>7.1%</b>	<b>15.4%</b>	<b>8.3%</b>	<b>16.3%</b>	<b>7.0%</b>	<b>7.4%</b>	<b>7.5%</b>
33. Waiwhetu South	7.8%	80.8%	27.9%	7.6%	14.6%	10.2%	14.6%	6.0%	6.3%	8.1%
34. Gracefield	9.5%	61.9%	28.6%	0.0%	9.5%	9.5%	9.5%	4.8%	4.8%	19.0%
35. Moera	9.8%	72.7%	32.0%	8.5%	15.9%	8.0%	12.9%	6.3%	5.4%	13.2%
36. Woburn South	9.0%	82.9%	27.9%	6.3%	10.8%	6.3%	17.1%	8.1%	7.2%	4.5%
37. Korokoro	4.1%	87.5%	30.3%	6.4%	14.6%	7.9%	16.3%	6.7%	9.6%	5.5%
<i>Petone</i>	8.7%	79.2%	28.5%	7.1%	15.4%	7.1%	14.2%	7.2%	7.1%	8.4%
38. Petone Central	6.8%	82.8%	28.5%	4.5%	16.7%	7.2%	10.9%	6.3%	5.9%	7.7%
39. Esplanade	8.4%	78.4%	27.2%	7.8%	15.4%	7.5%	15.3%	7.2%	6.4%	9.6%
40. Wilford	9.5%	78.9%	29.3%	7.3%	14.9%	6.8%	14.3%	7.5%	7.8%	7.7%
41. Eastbourne	5.1%	87.2%	32.1%	6.8%	16.5%	9.5%	21.3%	7.3%	8.4%	4.6%
<b>Kapiti Coast District</b>	<b>8.7%</b>	<b>80.9%</b>	<b>26.8%</b>	<b>7.2%</b>	<b>15.0%</b>	<b>9.5%</b>	<b>17.0%</b>	<b>5.7%</b>	<b>5.9%</b>	<b>7.3%</b>
Porirua City	8.7%	78.9%	36.1%	8.7%	17.4%	7.7%	15.0%	8.0%	6.8%	8.2%
Upper Hutt	8.4%	81.7%	31.4%	7.2%	16.2%	7.8%	14.6%	7.4%	6.2%	6.0%
Wellington City	6.4%	83.1%	26.0%	5.6%	13.1%	7.0%	15.4%	8.8%	9.0%	7.0%
<b>New Zealand</b>	<b>9.0%</b>	<b>78.1%</b>	<b>28.8%</b>	<b>6.9%</b>	<b>14.3%</b>	<b>7.7%</b>	<b>14.8%</b>	<b>8.1%</b>	<b>6.5%</b>	<b>8.7%</b>

### 3.5 Family Type

The Census 'family type' describes the presence of couples (with or without children) or one parent and their child(ren) who are living within the same household. The 'children' can be of any age but cannot have a partner or their own children living in the same household.

The highest percentage of sole parent families were found in Naenae and Moera. Figure 27 shows that there is a strong negative correlation between the average household income and sole parent families. For the purposes of the trend line in Figure 27 the values for Gracefield (0.0,27136) were excluded.

The number of couples without children and the number of one parent families has both increased between 1996-2001. This is the case both for Hutt City and New Zealand, as shown in Figure 28. The highest occurrence of families made up of two parents and child(ren) is in Woburn North and Belmont. Couples in Melling and Avalon West are the least likely to have children. Avalon West also has a high percentage in the over 65 years age group.

Figure 27: Sole Parent Family and Household Income

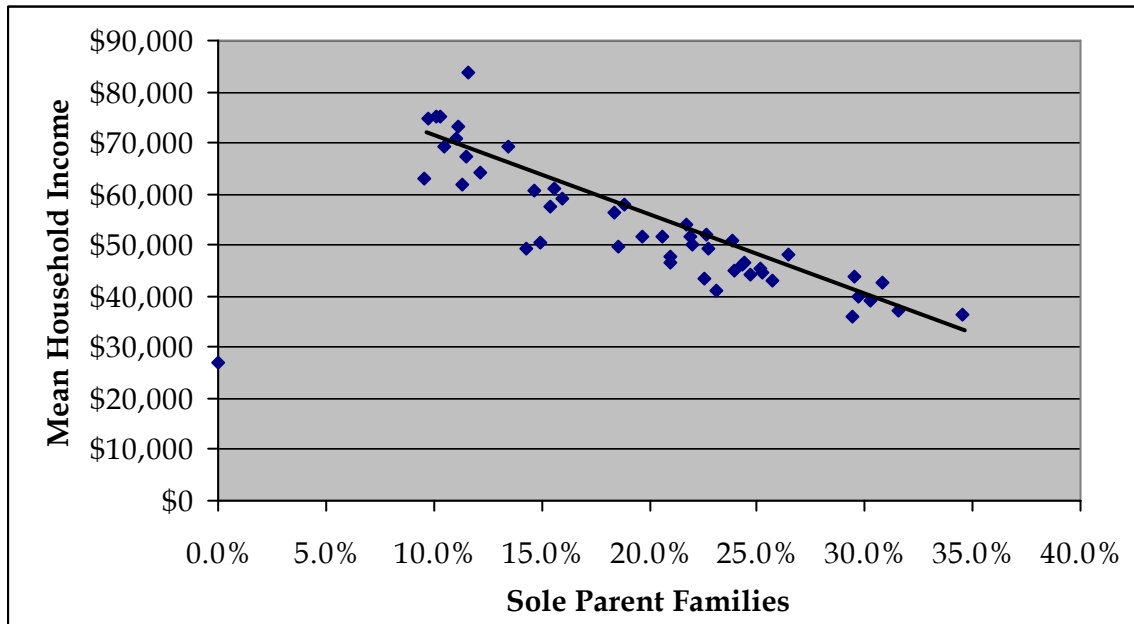


Figure 28: Family Type

	2001			1996		
	Couple without Children	Couple with Child(ren)	One Parent with Child(ren)	Couple without Children	Couple with Child(ren)	One Parent with Child(ren)
<b>Lower Hutt City</b>	<b>34.4%</b>	<b>45.4%</b>	<b>20.2%</b>	<b>33.6%</b>	<b>48.0%</b>	<b>18.4%</b>
<b>Wainuiomata Ward</b>	<b>30.0%</b>	<b>46.1%</b>	<b>23.9%</b>	<b>28.1%</b>	<b>51.2%</b>	<b>20.8%</b>
1. Glendale	26.6%	43.9%	29.5%	22.9%	52.8%	24.3%
2. Parkway	28.9%	46.7%	24.4%	27.5%	53.2%	19.4%
3. Fernlea	28.7%	50.3%	21.0%	28.2%	52.5%	19.3%
4. Arakura	27.9%	46.4%	25.7%	26.9%	53.0%	20.1%
5. Homedale West	32.7%	44.7%	22.6%	32.9%	45.3%	21.8%
6. Homedale East	33.3%	45.7%	21.0%	30.3%	48.9%	20.8%
7. Pencarrow	42.9%	47.6%	9.5%	38.6%	54.5%	6.8%
<b>Northern Ward</b>	<b>30.5%</b>	<b>44.3%</b>	<b>25.2%</b>	<b>28.7%</b>	<b>49.4%</b>	<b>21.8%</b>
<i>Stokes Valley</i>	<i>32.5%</i>	<i>44.7%</i>	<i>22.7%</i>	<i>30.6%</i>	<i>51.3%</i>	<i>18.1%</i>
8. Tawhai	33.3%	44.8%	21.9%	33.6%	52.6%	13.8%
9. Holborn	30.3%	43.2%	26.5%	25.9%	54.1%	20.0%
10. Delaney	27.2%	43.1%	29.7%	27.7%	46.0%	26.2%
11. Manuka	40.3%	48.4%	11.3%	34.4%	52.6%	13.0%
12. Taita North	22.7%	47.9%	29.4%	21.7%	48.3%	30.0%
13. Taita South	30.3%	39.5%	30.3%	28.3%	43.9%	27.8%
<b>Central Ward</b>	<b>37.7%</b>	<b>46.3%</b>	<b>16.0%</b>	<b>37.5%</b>	<b>47.0%</b>	<b>15.5%</b>
14. Avalon East	34.4%	42.5%	23.1%	34.9%	39.6%	25.5%
15. Avalon West	44.4%	40.6%	15.0%	44.1%	42.1%	13.9%
16. Boulcott	38.5%	46.8%	14.6%	36.9%	48.8%	14.3%
17. Epuni West	34.6%	45.7%	19.7%	33.6%	47.3%	19.1%
18. Waterloo West	34.1%	52.4%	13.4%	33.7%	50.6%	15.7%
19. Hutt Central	38.4%	50.5%	11.1%	38.6%	52.4%	9.0%
20. Melling	44.2%	37.2%	18.6%	38.5%	43.6%	17.9%
21. Alicetown	38.0%	43.6%	18.4%	42.9%	40.7%	16.4%
22. Woburn North	33.9%	54.5%	11.6%	31.6%	57.0%	11.4%
<b>Eastern Ward</b>	<b>31.9%</b>	<b>42.9%</b>	<b>25.2%</b>	<b>31.5%</b>	<b>43.6%</b>	<b>24.9%</b>
23. Naenae North	25.9%	39.7%	34.5%	27.5%	41.0%	31.5%
24. Naenae South	28.6%	40.6%	30.8%	28.1%	41.1%	30.8%
25. Epuni East	37.1%	42.3%	20.6%	34.8%	43.4%	21.7%
26. Waterloo East	36.9%	47.7%	15.4%	36.5%	47.8%	15.7%
27. Waiwhetu North	30.4%	45.2%	24.3%	29.9%	45.3%	24.8%
<b>Western Ward</b>	<b>38.8%</b>	<b>50.1%</b>	<b>11.1%</b>	<b>37.4%</b>	<b>53.8%</b>	<b>8.8%</b>
28. Normandale	41.9%	47.8%	10.3%	36.9%	55.6%	7.5%
29. Maungaraki	42.6%	45.9%	11.6%	39.5%	51.0%	9.5%
30. Belmont	36.2%	54.1%	9.7%	36.0%	56.1%	7.9%
31. Kelson	34.6%	53.3%	12.2%	35.9%	54.6%	9.6%
32. Haywards-Manor Park	40.6%	43.8%	15.6%	45.5%	40.9%	13.6%
<b>Harbour Ward</b>	<b>37.7%</b>	<b>43.5%</b>	<b>18.8%</b>	<b>38.5%</b>	<b>44.5%</b>	<b>17.1%</b>
33. Waiwhetu South	35.5%	39.8%	24.7%	33.3%	41.7%	25.0%
34. Gracefield	50.0%	50.0%	0.0%	25.0%	25.0%	50.0%
35. Moera	27.8%	40.6%	31.6%	29.2%	43.1%	27.7%
36. Woburn South	40.0%	45.7%	14.3%	41.0%	46.2%	12.8%
37. Korokoro	42.7%	46.8%	10.5%	42.9%	48.7%	8.4%
<i>Petone</i>	<i>37.2%</i>	<i>40.1%</i>	<i>22.7%</i>	<i>38.3%</i>	<i>42.4%</i>	<i>19.3%</i>
38. Petone Central	40.6%	37.7%	21.7%	42.3%	42.3%	15.5%
39. Esplanade	40.3%	35.8%	23.9%	37.7%	38.7%	23.6%
40. Wilford	34.3%	43.7%	22.0%	37.7%	45.0%	17.3%
41. Eastbourne	40.6%	49.3%	10.1%	42.4%	47.5%	10.1%
Kapiti Coast District	49.0%	33.9%	17.1%	47.8%	36.9%	15.3%
Porirua City	28.4%	46.7%	25.0%	27.3%	49.6%	23.1%
Upper Hutt	36.4%	45.7%	17.9%	34.6%	49.4%	16.0%
Wellington City	41.2%	43.8%	15.0%	40.2%	45.4%	14.4%
<b>New Zealand</b>	<b>39.0%</b>	<b>42.1%</b>	<b>18.9%</b>	<b>37.3%</b>	<b>44.9%</b>	<b>17.7%</b>

### 3.6 Marital Status

Figure 30 shows that the marital status percentages for both Hutt City and New Zealand are very similar. For both the legal and social marital status there is also a category for ‘not stated’ that has not been included in the table.

The residents of Petone Central are the most likely to have never been married. The highest rates of married couples are found within Woburn North, Normandale, and Belmont. Naenae North residents are the most likely to be separated, divorced, or widowed.

In terms of social marital status, Naenae North residents are the most likely to be single (non-partnered). The residents of the Western Ward, Pencarrow, Woburn North, Manuka, and Eastbourne have a higher rate of being partnered than the other areas. In terms of the Wards, the Western Ward has the largest proportion of the population that has a partner, as shown in Figure 29.

Figure 29: Social Marital Status

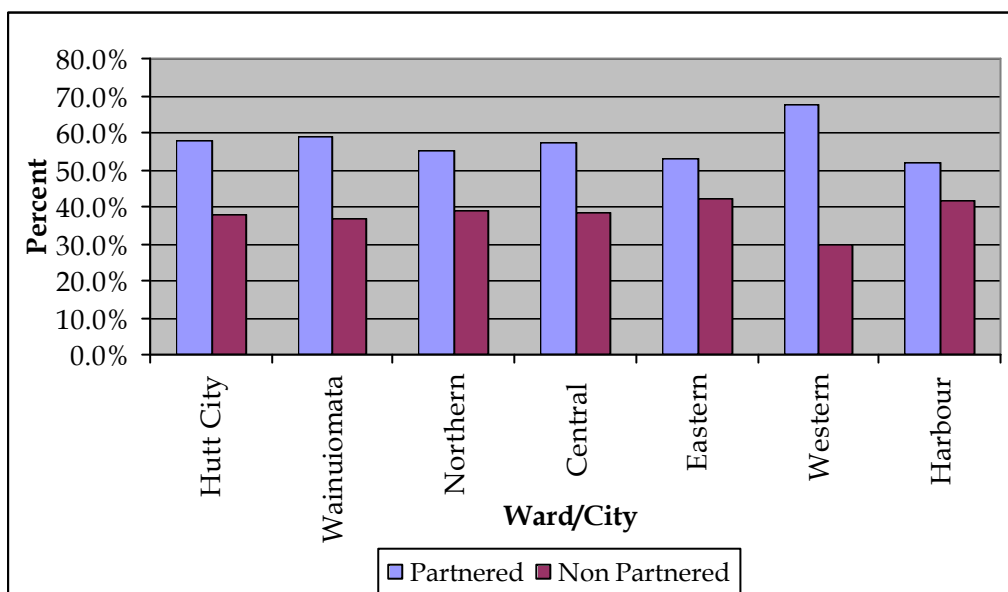


Figure 30: Marital Status

	Legal Marital Status			Social Marital Status	
	Never Married	Married (Not Separated)	Separated/ Divorced/ Widowed	Partnered	Non-Partnered
<b>Lower Hutt City</b>	<b>32.1%</b>	<b>46.4%</b>	<b>16.4%</b>	<b>57.6%</b>	<b>37.8%</b>
<b>Wainuiomata Ward</b>	<b>33.3%</b>	<b>46.7%</b>	<b>14.7%</b>	<b>59.1%</b>	<b>37.0%</b>
1. Glendale	35.5%	44.1%	14.3%	56.3%	39.0%
2. Parkway	32.2%	49.1%	14.4%	61.5%	35.8%
3. Fernlea	33.5%	49.5%	12.9%	61.2%	36.8%
4. Arakura	35.8%	42.8%	15.8%	56.6%	39.2%
5. Homedale West	32.5%	44.1%	17.8%	56.3%	38.4%
6. Homedale East	32.1%	49.2%	12.9%	61.2%	34.5%
7. Pencarrow	22.9%	57.6%	16.1%	68.6%	27.1%
<b>Northern Ward</b>	<b>32.3%</b>	<b>43.4%</b>	<b>17.5%</b>	<b>55.0%</b>	<b>39.0%</b>
<i>Stokes Valley</i>	<i>31.1%</i>	<i>47.1%</i>	<i>16.5%</i>	<i>59.2%</i>	<i>35.7%</i>
8. Tawhai	30.1%	48.0%	17.6%	60.2%	34.4%
9. Holborn	32.5%	45.5%	17.5%	59.2%	37.3%
10. Delaney	35.0%	38.9%	17.0%	52.0%	40.2%
11. Manuka	26.3%	57.4%	12.7%	66.3%	30.5%
12. Taita North	33.9%	37.7%	18.4%	46.7%	45.1%
13. Taita South	34.9%	36.8%	19.8%	49.0%	43.9%
<b>Central Ward</b>	<b>29.3%</b>	<b>49.2%</b>	<b>17.6%</b>	<b>57.1%</b>	<b>38.3%</b>
14. Avalon East	32.0%	41.9%	19.9%	50.6%	45.1%
15. Avalon West	25.6%	52.0%	19.2%	57.7%	37.2%
16. Boulcott	26.4%	51.0%	19.2%	59.1%	36.4%
17. Epuni West	33.3%	45.7%	17.0%	53.7%	41.1%
18. Waterloo West	27.0%	53.6%	15.9%	61.8%	34.8%
19. Hutt Central	24.4%	54.5%	18.1%	59.4%	35.5%
20. Melling	39.0%	36.2%	17.0%	51.8%	40.4%
21. Alicetown	38.0%	42.1%	16.0%	56.0%	40.2%
22. Woburn North	26.7%	59.3%	11.6%	65.6%	32.6%
<b>Eastern Ward</b>	<b>34.6%</b>	<b>41.5%</b>	<b>18.5%</b>	<b>53.2%</b>	<b>42.1%</b>
23. Naenae North	38.1%	32.6%	21.4%	44.8%	48.1%
24. Naenae South	37.6%	37.9%	18.2%	50.6%	44.8%
25. Epuni East	31.4%	47.3%	16.4%	58.5%	38.1%
26. Waterloo East	29.7%	50.8%	16.8%	60.4%	36.8%
27. Waiwhetu North	38.1%	37.8%	19.2%	53.0%	40.9%
<b>Western Ward</b>	<b>28.8%</b>	<b>56.2%</b>	<b>11.9%</b>	<b>67.7%</b>	<b>29.5%</b>
28. Normandale	27.4%	58.8%	11.1%	69.9%	28.2%
29. Maungaraki	29.4%	54.2%	12.7%	65.0%	31.1%
30. Belmont	27.6%	58.4%	11.3%	70.4%	27.1%
31. Kelson	30.9%	55.0%	11.0%	67.9%	30.6%
32. Haywards-Manor Park	27.6%	48.6%	19.0%	55.8%	35.6%
<b>Harbour Ward</b>	<b>36.8%</b>	<b>38.2%</b>	<b>18.1%</b>	<b>52.1%</b>	<b>41.5%</b>
33. Waiwhetu South	34.3%	39.6%	19.9%	51.6%	42.8%
34. Gracefield	42.9%	19.0%	9.5%	23.8%	52.4%
35. Moera	36.1%	34.6%	18.5%	47.3%	45.1%
36. Woburn South	34.2%	48.6%	13.5%	58.6%	37.8%
37. Korokoro	30.3%	51.0%	14.3%	67.1%	29.7%
<i>Petone</i>	<i>38.9%</i>	<i>35.6%</i>	<i>18.6%</i>	<i>50.8%</i>	<i>42.3%</i>
38. Petone Central	45.2%	31.7%	17.6%	51.8%	41.9%
39. Esplanade	39.3%	33.0%	19.9%	49.4%	42.7%
40. Wilford	37.1%	38.4%	17.9%	51.5%	42.1%
41. Eastbourne	25.4%	56.6%	14.9%	65.3%	31.8%
Kapiti Coast District	22.0%	52.3%	20.6%	61.9%	33.3%
Porirua City	34.1%	44.7%	14.0%	56.5%	37.3%
Upper Hutt	30.2%	48.6%	16.8%	58.9%	36.4%
Wellington City	40.8%	39.7%	13.4%	52.7%	41.5%
<b>New Zealand</b>	<b>30.6%</b>	<b>46.3%</b>	<b>16.3%</b>	<b>56.9%</b>	<b>36.7%</b>

### 3.7 Highest Qualification

## 3.7 Highest Qualification

When interpreting the Census highest qualification data, attention must be made to the fact that there is a high percentage that falls within the 'Not Elsewhere Included' category. Only people aged 15 years and over are included in the highest qualification data.

There are no significant differences between the Hutt City and New Zealand percentages. Figure 34 (page 42) shows that Eastbourne and Woburn North residents are most likely to have gained a bachelor degree or higher qualification. Glendale and Taita North residents are the most likely to have not gained any qualification. As Figure 31 shows, there is a clear correlation between having gained a university qualification (bachelor degree or higher) and the mean personal income.

Figure 31: University Qualification and Personal Income

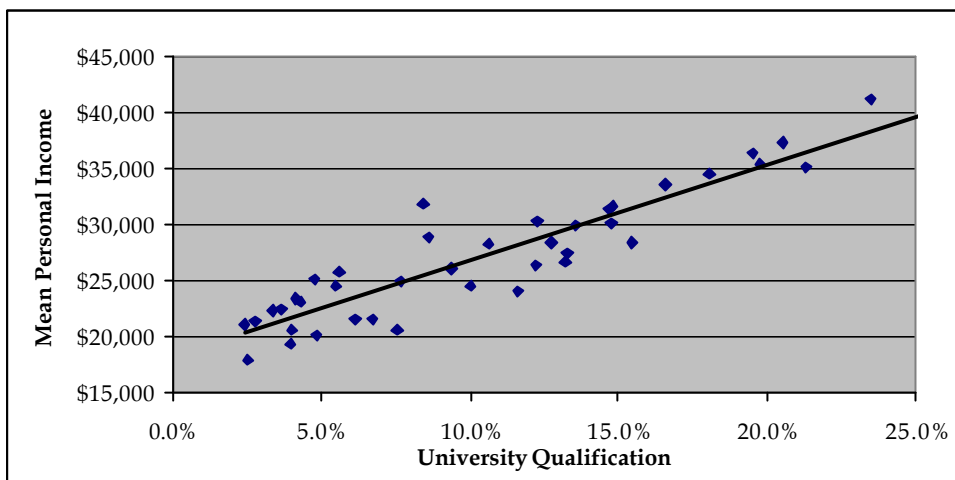
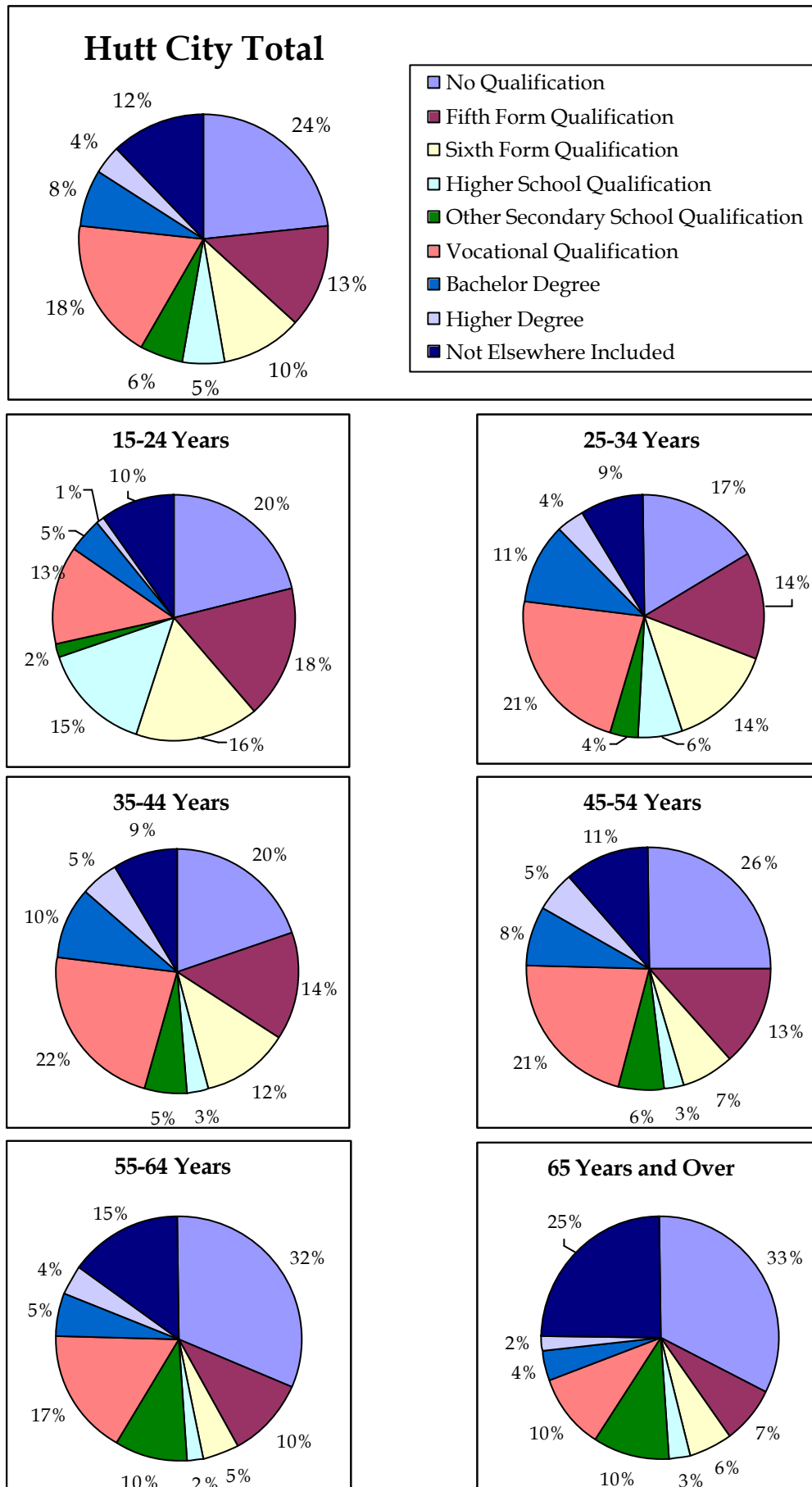


Figure 32: Age and Highest Qualification Gained

Age Group	No Qualification	Fifth Form Qualification	Sixth Form Qualification	Higher School Qualification	Other Secondary School Qualif.	Vocational Qualification	Bachelor Degree	Higher Degree	Not Elsewhere Included
15-24 Years	21.0%	17.5%	16.1%	14.9%	1.8%	13.1%	4.7%	0.7%	10.0%
25-34 Years	16.6%	14.3%	13.8%	5.7%	3.9%	22.4%	11.1%	3.5%	8.7%
35-44 Years	19.9%	14.2%	11.9%	2.7%	5.5%	22.5%	9.8%	4.9%	8.7%
45-54 Years	25.3%	13.2%	6.8%	2.6%	6.1%	21.4%	8.1%	5.4%	11.2%
55-64 Years	31.6%	10.3%	4.7%	1.9%	9.7%	17.1%	5.4%	4.1%	15.1%
65 Years and over	32.6%	7.4%	5.8%	3.0%	10.2%	10.2%	4.0%	2.2%	24.7%
<b>Total</b>	<b>23.4%</b>	<b>13.2%</b>	<b>10.5%</b>	<b>5.3%</b>	<b>5.8%</b>	<b>18.4%</b>	<b>7.6%</b>	<b>3.5%</b>	<b>12.3%</b>

The highest qualification gained has changed over time. Figures 32 and 33 show a breakdown of the highest qualification gained by age group for Hutt City residents. The highest percentages having no qualification belong to the 55 years and over age groups. Changes over time have resulted in school leavers now being higher qualified. The 15-24 year age group would include many people who are still studying.

Figure 33: Age and Highest Qualification Gained



### 3.7 Highest Qualification

Figure 34: Highest Qualification Gained

	No Qualif.	Fifth Form Qualif.	Sixth Form Qualif.	Higher School Qualif.	Other Secondary School Qualif.	Vocational Qualif.	Bachelor Degree	Higher Degree	Not Elsewhere Included
<b>Lower Hutt City</b>	<b>23.4%</b>	<b>13.2%</b>	<b>10.5%</b>	<b>5.3%</b>	<b>5.8%</b>	<b>18.4%</b>	<b>7.6%</b>	<b>3.5%</b>	<b>12.3%</b>
<b>Wainuiomata Ward</b>	<b>32.2%</b>	<b>16.1%</b>	<b>9.7%</b>	<b>3.9%</b>	<b>5.3%</b>	<b>16.4%</b>	<b>2.5%</b>	<b>0.9%</b>	<b>13.0%</b>
1. Glendale	37.3%	15.2%	9.5%	3.7%	3.5%	14.9%	1.9%	0.4%	13.6%
2. Parkway	28.4%	17.1%	9.9%	4.1%	6.9%	17.3%	3.0%	1.1%	12.2%
3. Fernlea	32.4%	15.0%	10.7%	4.9%	5.3%	17.6%	2.8%	1.0%	10.7%
4. Arakura	33.8%	15.4%	10.1%	4.1%	5.5%	14.3%	2.0%	1.0%	13.7%
5. Homedale West	30.7%	15.8%	8.8%	3.5%	5.8%	17.4%	1.9%	1.4%	14.4%
6. Homedale East	29.6%	17.7%	9.7%	3.6%	5.4%	17.1%	3.2%	0.9%	12.8%
7. Pencarrow	23.7%	16.9%	9.3%	3.4%	5.9%	23.7%	5.1%	2.5%	8.5%
<b>Northern Ward</b>	<b>30.0%</b>	<b>14.4%</b>	<b>9.0%</b>	<b>4.3%</b>	<b>5.3%</b>	<b>17.0%</b>	<b>3.4%</b>	<b>1.5%</b>	<b>15.2%</b>
<i>Stokes Valley</i>	<i>27.2%</i>	<i>15.9%</i>	<i>9.5%</i>	<i>4.3%</i>	<i>4.7%</i>	<i>19.9%</i>	<i>3.8%</i>	<i>1.9%</i>	<i>13.0%</i>
8. Tawhai	26.9%	16.7%	10.1%	4.0%	4.6%	21.5%	3.7%	1.8%	11.1%
9. Holborn	28.5%	15.7%	10.0%	3.9%	4.5%	19.5%	3.9%	1.4%	12.6%
10. Delaney	31.9%	14.7%	7.8%	3.4%	5.1%	15.0%	2.5%	1.4%	18.1%
11. Manuka	20.4%	16.1%	10.2%	6.3%	4.5%	23.8%	5.7%	2.9%	10.4%
12. Taita North	36.3%	12.1%	7.0%	3.9%	7.3%	10.7%	1.6%	0.7%	20.2%
13. Taita South	33.2%	11.7%	9.1%	4.8%	5.3%	13.4%	3.7%	1.2%	17.8%
<b>Central Ward</b>	<b>20.1%</b>	<b>12.3%</b>	<b>11.3%</b>	<b>6.0%</b>	<b>6.2%</b>	<b>18.9%</b>	<b>10.2%</b>	<b>4.0%</b>	<b>11.1%</b>
14. Avalon East	31.0%	10.4%	9.9%	4.5%	7.5%	15.3%	5.2%	1.6%	14.7%
15. Avalon West	22.3%	12.1%	11.0%	5.2%	7.5%	18.9%	6.8%	2.4%	13.7%
16. Boulcott	18.4%	12.2%	12.6%	5.8%	6.0%	19.2%	10.0%	4.5%	11.1%
17. Epuni West	21.0%	12.0%	10.6%	6.4%	6.3%	20.1%	9.7%	3.1%	11.3%
18. Waterloo West	14.6%	13.3%	12.9%	7.3%	5.2%	19.7%	13.3%	5.2%	8.6%
19. Hutt Central	16.7%	11.8%	10.7%	5.9%	6.7%	19.0%	14.6%	5.9%	8.7%
20. Melling	22.7%	14.9%	11.3%	6.4%	4.3%	17.0%	7.1%	3.5%	12.8%
21. Alicetown	18.7%	14.9%	12.4%	6.6%	3.9%	20.5%	8.5%	3.5%	10.8%
22. Woburn North	12.5%	12.2%	12.5%	7.4%	5.3%	19.0%	15.7%	7.4%	8.0%
<b>Eastern Ward</b>	<b>26.8%</b>	<b>12.7%</b>	<b>9.8%</b>	<b>5.2%</b>	<b>5.4%</b>	<b>16.3%</b>	<b>6.6%</b>	<b>2.9%</b>	<b>14.1%</b>
23. Naenae North	35.6%	12.6%	8.7%	3.7%	4.5%	12.1%	3.0%	1.0%	18.9%
24. Naenae South	33.6%	13.0%	8.2%	4.0%	5.2%	13.9%	4.2%	1.9%	16.2%
25. Epuni East	20.6%	12.3%	9.9%	5.7%	6.2%	19.1%	9.5%	3.7%	12.6%
26. Waterloo East	17.7%	13.2%	11.9%	7.3%	5.5%	20.3%	10.0%	4.9%	8.9%
27. Waiwhetu North	23.3%	11.6%	10.2%	5.5%	7.0%	17.7%	7.8%	3.5%	13.1%
<b>Western Ward</b>	<b>13.0%</b>	<b>13.5%</b>	<b>12.8%</b>	<b>6.8%</b>	<b>6.2%</b>	<b>23.3%</b>	<b>11.4%</b>	<b>5.8%</b>	<b>7.2%</b>
28. Normandale	11.7%	12.4%	12.6%	7.3%	5.8%	24.1%	13.0%	7.0%	6.4%
29. Maungaraki	12.9%	12.9%	11.3%	6.5%	7.3%	23.6%	11.3%	5.4%	8.9%
30. Belmont	12.8%	14.2%	12.8%	6.6%	5.7%	23.0%	12.4%	7.1%	5.6%
31. Kelson	13.9%	14.0%	15.3%	7.2%	5.8%	23.5%	9.8%	4.7%	5.6%
32. Haywards-Manor Pk	17.3%	14.4%	10.6%	4.8%	5.8%	18.3%	6.7%	1.0%	20.2%
<b>Harbour Ward</b>	<b>17.9%</b>	<b>10.9%</b>	<b>10.7%</b>	<b>5.9%</b>	<b>6.1%</b>	<b>19.2%</b>	<b>11.0%</b>	<b>6.1%</b>	<b>12.3%</b>
33. Waiwhetu South	22.0%	11.6%	10.1%	5.1%	7.2%	19.8%	6.9%	3.0%	14.1%
34. Gracefield	33.3%	19.0%	0.0%	0.0%	0.0%	9.5%	9.5%	0.0%	23.8%
35. Moera	27.8%	10.5%	7.6%	5.1%	7.3%	13.4%	5.4%	2.4%	20.0%
36. Woburn South	17.1%	10.8%	11.7%	8.1%	7.2%	18.9%	10.8%	4.5%	9.9%
37. Korokoro	14.0%	12.5%	11.4%	5.5%	5.2%	22.7%	13.4%	8.2%	7.6%
<i>Petone</i>	<i>21.1%</i>	<i>11.6%</i>	<i>10.5%</i>	<i>5.5%</i>	<i>5.8%</i>	<i>18.4%</i>	<i>8.8%</i>	<i>4.1%</i>	<i>14.3%</i>
38. Petone Central	18.1%	13.1%	8.6%	5.9%	6.3%	21.3%	10.0%	4.1%	13.6%
39. Esplanade	21.4%	11.2%	10.1%	5.1%	5.4%	19.8%	8.4%	3.7%	15.3%
40. Wilford	21.5%	11.5%	11.2%	5.8%	6.0%	16.8%	8.8%	4.4%	13.7%
41. Eastbourne	8.8%	9.1%	12.2%	6.9%	5.8%	21.1%	17.3%	11.4%	7.3%
Kapiti Coast District	23.1%	13.7%	10.3%	3.8%	6.7%	19.7%	6.3%	3.2%	13.3%
Porirua City	24.7%	13.3%	10.5%	5.4%	5.7%	17.4%	6.2%	3.0%	13.7%
Upper Hutt City	23.8%	14.8%	11.3%	5.0%	5.4%	19.8%	5.6%	2.7%	11.7%
Wellington City	11.6%	8.8%	10.3%	9.2%	6.4%	17.4%	17.2%	9.4%	9.6%
<b>New Zealand</b>	<b>23.7%</b>	<b>13.5%</b>	<b>9.8%</b>	<b>5.4%</b>	<b>5.8%</b>	<b>17.6%</b>	<b>6.9%</b>	<b>3.2%</b>	<b>14.1%</b>