

## 4. Households

### 4.1 Occupied Dwellings

A graph showing the changes in the number of occupied dwellings, compared against the population changes, has been included as Figure 3 (population change section). Figure 35 shows where the changes have occurred within Hutt City.

Figure 35: Changes in Number of Occupied Dwellings 1996-2001

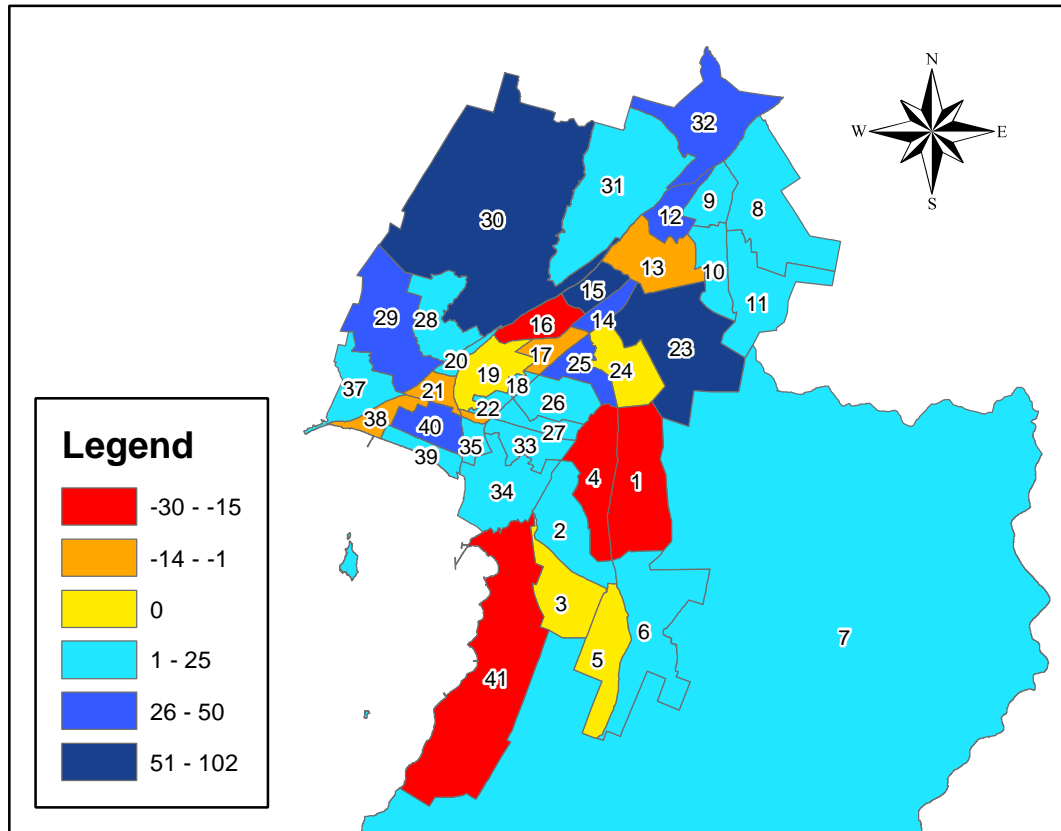


Figure 36 shows that Belmont is the fastest growing area unit of Hutt City between 1991-2001. However, Avalon West experienced the largest increase in the number of occupied dwellings between 1996-2001. There was also a significant increase in Naenae North between 1996-2001, which was well above the growth rate between 1991-1996 in that area. Haywards-Manor Park experienced the highest percentage increase between 1996-2001.

There was a large drop in the growth rate that occurred in the Esplanade, Maungaraki, and Tawai area units between 1991-1996 and 1996-2001. This decrease may be due to a lack of available land rather than a decrease in the demand for dwellings in the area. Between 1996-2001 Taita North reversed its previous situation of a decreasing number of occupied dwellings and experienced an increase of 45 dwellings.

Figure 37 shows the total number of dwellings located in each area. The total occupied dwelling is calculated using the number of occupied dwellings for 2001 (from Figure 36) and adds on the number of dwellings that were classed as unoccupied because the residents were away on census night. The number of dwellings that were empty on census night is used to calculate the total number of dwellings in each area.

#### 4.1 Occupied Dwellings

Figure 36: Occupied Dwellings

	2001	1996	1991	1996-2001 Change	1996-2001 % Change	1991-2001 Change	1991-2001 % Change
<b>Lower Hutt City</b>	<b>34,659</b>	<b>34,140</b>	<b>33,078</b>	<b>519</b>	<b>1.5%</b>	<b>1,581</b>	<b>4.8%</b>
<b>Wainuiomata Ward</b>	<b>5,640</b>	<b>5,652</b>	<b>5,571</b>	<b>-12</b>	<b>-0.2%</b>	<b>69</b>	<b>1.2%</b>
1. Glendale	1,098	1,119	1,083	-21	-1.9%	15	1.4%
2. Parkway	981	975	969	6	0.6%	12	1.2%
3. Fernlea	654	654	651	0	0.0%	3	0.5%
4. Arakura	843	861	846	-18	-2.1%	-3	-0.4%
5. Homedale West	876	876	867	0	0.0%	9	1.0%
6. Homedale East	1,020	1,002	1,002	18	1.8%	18	1.8%
7. Pencarrow	168	165	153	3	1.8%	15	9.8%
<b>Northern Ward</b>	<b>5,097</b>	<b>4,998</b>	<b>4,923</b>	<b>99</b>	<b>2.0%</b>	<b>174</b>	<b>3.5%</b>
<i>Stokes Valley</i>	<i>3,186</i>	<i>3,123</i>	<i>3,006</i>	<i>63</i>	<i>2.0%</i>	<i>180</i>	<i>6.0%</i>
8. Tawhai	1,104	1,092	1,029	12	1.1%	75	7.3%
9. Holborn	693	681	666	12	1.8%	27	4.1%
10. Delaney	801	777	753	24	3.1%	48	6.4%
11. Manuka	588	573	558	15	2.6%	30	5.4%
12. Taita North	909	864	918	45	5.2%	-9	-1.0%
13. Taita South	1,002	1,011	999	-9	-0.9%	3	0.3%
<b>Central Ward</b>	<b>6,951</b>	<b>6,828</b>	<b>6,537</b>	<b>123</b>	<b>1.8%</b>	<b>414</b>	<b>6.3%</b>
14. Avalon East	873	840	801	33	3.9%	72	9.0%
15. Avalon West	930	828	810	102	12.3%	120	14.8%
16. Boulcott	891	921	891	-30	-3.3%	0	0.0%
17. Eponi West	1,170	1,179	1,125	-9	-0.8%	45	4.0%
18. Waterloo West	333	327	321	6	1.8%	12	3.7%
19. Hutt Central	1,299	1,299	1,227	0	0.0%	72	5.9%
20. Melling	228	204	207	24	11.8%	21	10.1%
21. Alicetown	768	780	735	-12	-1.5%	33	4.5%
22. Woburn North	459	450	420	9	2.0%	39	9.3%
<b>Eastern Ward</b>	<b>6,069</b>	<b>5,961</b>	<b>5,859</b>	<b>108</b>	<b>1.8%</b>	<b>210</b>	<b>3.6%</b>
23. Naenae North	1,572	1,515	1,506	57	3.8%	66	4.4%
24. Naenae South	1,245	1,245	1,218	0	0.0%	27	2.2%
25. Eponi East	1,131	1,101	1,107	30	2.7%	24	2.2%
26. Waterloo East	1,599	1,590	1,536	9	0.6%	63	4.1%
27. Waiwhetu North	522	510	492	12	2.4%	30	6.1%
<b>Western Ward</b>	<b>4,200</b>	<b>4,017</b>	<b>3,819</b>	<b>183</b>	<b>4.6%</b>	<b>381</b>	<b>10.0%</b>
28. Normandale	732	711	693	21	3.0%	39	5.6%
29. Maungaraki	1,266	1,233	1,164	33	2.7%	102	8.8%
30. Belmont	1,170	1,077	960	93	8.6%	210	21.9%
31. Kelson	909	903	879	6	0.7%	30	3.4%
32. Haywards-Manor Pk	123	93	123	30	32.3%	0	0.0%
<b>Harbour Ward</b>	<b>6,711</b>	<b>6,687</b>	<b>6,372</b>	<b>24</b>	<b>0.4%</b>	<b>339</b>	<b>5.3%</b>
33. Waiwhetu South	888	885	825	3	0.3%	63	7.6%
34. Gracefield	27	24	24	3	12.5%	3	12.5%
35. Moera	612	609	600	3	0.5%	12	2.0%
36. Woburn South	180	183	183	-3	-1.6%	-3	-1.6%
37. Korokoro	492	483	450	9	1.9%	42	9.3%
<i>Petone</i>	<i>2,658</i>	<i>2,625</i>	<i>2,487</i>	<i>33</i>	<i>1.3%</i>	<i>171</i>	<i>6.9%</i>
38. Petone Central	336	342	324	-6	-1.8%	12	3.7%
39. Esplanade	969	963	888	6	0.6%	81	9.1%
40. Wilford	1,353	1,320	1,275	33	2.5%	78	6.1%
41. Eastbourne	1,854	1,878	1,803	-24	-1.3%	51	2.8%
Kapiti Coast District	17,463	15,417	13,524	2,046	13.3%	3,939	29.1%
Porirua City	14,925	14,085	13,530	840	6.0%	1,395	10.3%
Upper Hutt	13,236	12,831	12,405	405	3.2%	831	6.7%
Wellington City	62,733	59,286	55,728	3,447	5.8%	7,005	12.6%
<b>New Zealand</b>	<b>1,368,204</b>	<b>1,283,991</b>	<b>1,185,396</b>	<b>84,213</b>	<b>6.6%</b>	<b>182,808</b>	<b>15.4%</b>

Figure 37: Total Dwellings

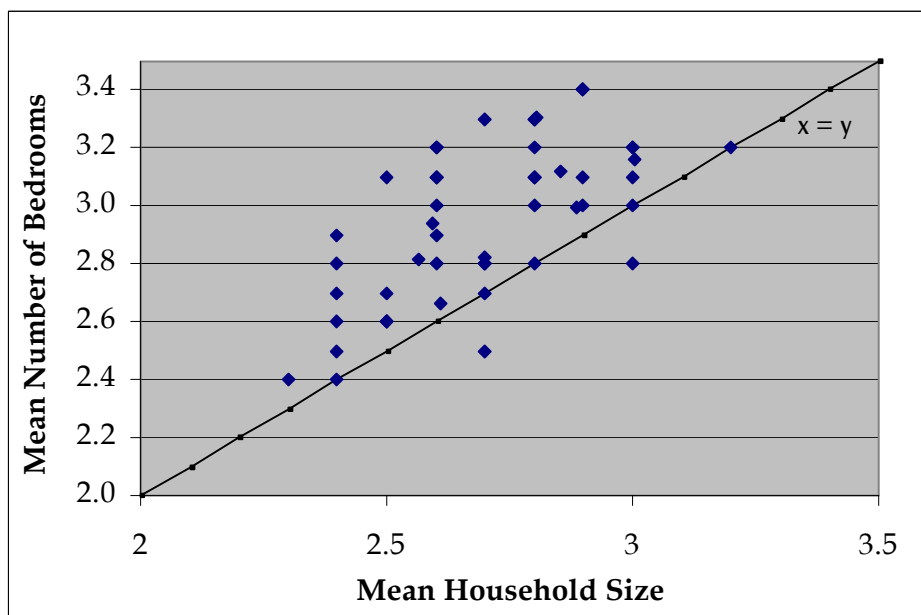
	Occupied Dwellings	Residents Away	Total Occupied Dwellings	Empty Dwellings	Total Dwellings
<b>Lower Hutt City</b>	<b>34,659</b>	<b>819</b>	<b>35,478</b>	<b>1,275</b>	<b>36,753</b>
<b>Wainuiomata Ward</b>	<b>5,640</b>	<b>114</b>	<b>5,754</b>	<b>162</b>	<b>5,916</b>
1. Glendale	1,098	27	1,125	27	1,152
2. Parkway	981	18	999	30	1,029
3. Fernlea	654	15	669	15	684
4. Arakura	843	15	858	36	894
5. Homedale West	876	21	897	24	921
6. Homedale East	1,020	12	1,032	24	1,056
7. Pencarrow	168	6	174	6	180
<b>Northern Ward</b>	<b>5,097</b>	<b>93</b>	<b>5,190</b>	<b>213</b>	<b>5,403</b>
<i>Stokes Valley</i>	<i>3,186</i>	<i>72</i>	<i>3,258</i>	<i>90</i>	<i>3,348</i>
8. Tawhai	1,104	33	1,137	36	1,173
9. Holborn	693	9	702	15	717
10. Delaney	801	12	813	30	843
11. Manuka	588	18	606	9	615
12. Taita North	909	6	915	72	987
13. Taita South	1,002	15	1,017	51	1,068
<b>Central Ward</b>	<b>6,951</b>	<b>165</b>	<b>7,116</b>	<b>309</b>	<b>7,425</b>
14. Avalon East	873	18	891	36	927
15. Avalon West	930	15	945	48	993
16. Boulcott	891	30	921	36	957
17. Epuni West	1,170	18	1,188	63	1,251
18. Waterloo West	333	9	342	9	351
19. Hutt Central	1,299	42	1,341	54	1,395
20. Melling	228	3	231	15	246
21. Alicetown	768	18	786	33	819
22. Woburn North	459	12	471	15	486
<b>Eastern Ward</b>	<b>6,069</b>	<b>141</b>	<b>6,210</b>	<b>207</b>	<b>6,417</b>
23. Naenae North	1,572	42	1,614	45	1,659
24. Naenae South	1,245	18	1,263	42	1,305
25. Epuni East	1,131	27	1,158	51	1,209
26. Waterloo East	1,599	45	1,644	48	1,692
27. Waiwhetu Nort	522	9	531	21	552
<b>Western Ward</b>	<b>4,200</b>	<b>117</b>	<b>4,317</b>	<b>96</b>	<b>4,413</b>
28. Normandale	732	15	747	12	759
29. Maungaraki	1,266	30	1,296	42	1,338
30. Belmont	1,170	39	1,209	18	1,227
31. Kelson	909	27	936	18	954
32. Haywards-Manor Pk	123	6	129	6	135
<b>Harbour Ward</b>	<b>6,711</b>	<b>183</b>	<b>6,894</b>	<b>288</b>	<b>7,182</b>
33. Waiwhetu South	888	21	909	45	954
34. Gracefield	27	-	27	6	33
35. Moera	612	15	627	24	651
36. Woburn South	180	9	189	12	201
37. Korokoro	492	15	507	12	519
<i>Petone</i>	<i>2,658</i>	<i>54</i>	<i>2,712</i>	<i>117</i>	<i>2,829</i>
38. Petone Central	336	6	342	21	363
39. Esplanade	969	18	987	45	1,032
40. Wilford	1,353	30	1,383	51	1,434
41. Eastbourne	1,854	69	1,923	72	1,995
Kapiti Coast District	17,463	1,254	18,717	1,626	20,343
Porirua City	14,925	279	15,204	528	15,732
Upper Hutt	13,236	291	13,527	549	14,076
Wellington City	62,733	1,836	64,569	2,721	67,290
<b>New Zealand</b>	<b>1,368,204</b>	<b>51,276</b>	<b>1,419,480</b>	<b>96,159</b>	<b>1,515,639</b>

## 4.2 Household Composition, Size, and Number of Bedrooms

There are relatively few occurrences where there is more than one family in a household. As Figure 39 shows this is the situation in both Hutt City and New Zealand. Fernlea and Moera were the most likely to have three or more families in the one household, although there was only 0.5% in each area. Taita North had the highest percentage of two families in the one household (4.4%).

A comparison between the average number of household members and the average numbers of bedrooms is shown in Figure 38. Figure 38 has had a line added to show where the number of household members equals the number of bedrooms. (This line has been labelled 'x=y'.) There are only two area units, Taita North and Moera, in Hutt City where the average number of bedrooms is less than the average number of household members. Figure 40 shows both the average number of household members and the average number of bedrooms that the dwelling had.

Figure 38: Size of Household and Number of Bedrooms



Taita North, Waiwhetu North, and Gracefield were the only area units where the mean number of household members increased between 1991-2001. However, the small population in Gracefield means that the average there is more susceptible to change. Haywards-Manor Park experienced a growth in average household size between 1996-2001.

In terms of the number of bedrooms, Belmont and Woburn North have the largest houses. The smallest houses are found in Gracefield, then Woburn South, and Epuni West.

Petone Central has the highest percentage of 'other multiperson households'. This may be contributed to the fact that the tertiary education provider 'Weltec' (Wellington Institute of Technology) is situated in Petone.

Figure 39: Household Composition

	One-family Household (with or without other people)	Two-family Household (with or without other people)	Three or More Family Household (with or without other People)	Other Multiperson Household	One-person Household
<b>Lower Hutt City</b>	<b>68.8%</b>	<b>2.0%</b>	<b>0.1%</b>	<b>4.2%</b>	<b>23.6%</b>
<b>Wainuiomata Ward</b>	<b>75.5%</b>	<b>2.9%</b>	<b>0.2%</b>	<b>2.8%</b>	<b>17.4%</b>
1. Glendale	78.6%	3.3%	0.3%	3.3%	13.2%
2. Parkway	76.0%	3.4%	0.3%	1.8%	17.2%
3. Fernlea	79.2%	2.3%	0.5%	2.3%	15.7%
4. Arakura	72.1%	3.9%	0.0%	3.9%	19.6%
5. Homedale West	71.0%	2.1%	0.0%	3.4%	21.7%
6. Homedale East	75.7%	2.7%	0.3%	2.1%	17.5%
7. Pencarrow	76.4%	1.8%	0.0%	3.6%	18.2%
<b>Northern Ward</b>	<b>69.4%</b>	<b>2.7%</b>	<b>0.1%</b>	<b>3.9%</b>	<b>21.9%</b>
<i>Stokes Valley</i>	<i>72.8%</i>	<i>2.6%</i>	<i>0.0%</i>	<i>3.2%</i>	<i>19.8%</i>
8. Tawhai	72.7%	3.0%	0.0%	3.3%	19.7%
9. Holborn	75.2%	2.2%	0.0%	2.6%	17.8%
10. Delaney	68.7%	2.6%	0.0%	4.5%	22.6%
11. Manuka	75.5%	2.0%	0.0%	2.0%	18.4%
12. Taita North	61.7%	4.4%	0.3%	5.0%	25.5%
13. Taita South	65.8%	1.8%	0.0%	4.8%	25.5%
<b>Central Ward</b>	<b>65.7%</b>	<b>1.4%</b>	<b>0.0%</b>	<b>4.4%</b>	<b>27.8%</b>
14. Avalon East	60.6%	1.7%	0.0%	4.2%	32.4%
15. Avalon West	63.2%	1.6%	0.3%	2.9%	30.6%
16. Boulcott	67.1%	1.4%	0.0%	4.7%	26.1%
17. Epunui West	63.0%	1.3%	0.0%	4.9%	30.5%
18. Waterloo West	72.7%	0.9%	0.0%	2.7%	23.6%
19. Hutt Central	70.9%	1.2%	0.0%	3.3%	24.2%
20. Melling	55.6%	2.8%	0.0%	8.3%	30.6%
21. Alicetown	61.0%	1.6%	0.0%	7.5%	29.5%
22. Woburn North	77.3%	1.3%	0.0%	2.7%	18.0%
<b>Eastern Ward</b>	<b>65.6%</b>	<b>2.2%</b>	<b>0.0%</b>	<b>4.7%</b>	<b>26.3%</b>
23. Naenae North	61.4%	2.5%	0.2%	4.8%	29.3%
24. Naenae South	68.3%	2.9%	0.0%	5.3%	22.3%
25. Epunui East	67.7%	1.9%	0.0%	3.8%	25.5%
26. Waterloo East	66.9%	1.7%	0.0%	4.2%	26.8%
27. Waiwhetu North	63.2%	2.3%	0.0%	6.4%	27.5%
<b>Western Ward</b>	<b>78.7%</b>	<b>1.4%</b>	<b>0.1%</b>	<b>3.4%</b>	<b>15.9%</b>
28. Normandale	81.4%	0.8%	0.0%	1.7%	15.3%
29. Maungaraki	74.3%	1.9%	0.0%	4.8%	18.1%
30. Belmont	81.7%	1.5%	0.0%	2.6%	13.9%
31. Kelson	79.1%	1.0%	0.3%	4.3%	15.6%
32. Haywards-Manor Park	75.6%	2.4%	0.0%	2.4%	17.1%
<b>Harbour Ward</b>	<b>62.6%</b>	<b>1.7%</b>	<b>0.1%</b>	<b>5.3%</b>	<b>28.6%</b>
33. Waiwhetu South	60.4%	1.4%	0.0%	5.1%	31.7%
34. Gracefield	28.6%	0.0%	0.0%	14.3%	42.9%
35. Moera	59.9%	2.5%	0.5%	5.9%	27.2%
36. Woburn South	60.3%	1.7%	0.0%	5.2%	34.5%
37. Korokoro	74.7%	0.6%	0.0%	3.7%	20.4%
<i>Petone</i>	<i>58.1%</i>	<i>2.6%</i>	<i>0.1%</i>	<i>7.6%</i>	<i>29.7%</i>
38. Petone Central	58.7%	1.8%	0.0%	10.1%	26.6%
39. Esplanade	56.9%	3.1%	0.0%	7.5%	30.5%
40. Wilford	58.7%	2.5%	0.2%	7.0%	29.8%
41. Eastbourne	68.5%	0.5%	0.0%	2.1%	27.5%
Kapiti Coast District	67.5%	1.0%	0.0%	2.8%	27.5%
Porirua City	73.8%	4.2%	0.3%	3.6%	16.0%
Upper Hutt	70.9%	1.4%	0.0%	3.5%	23.4%
Wellington City	61.4%	1.4%	0.1%	9.8%	25.1%
<b>New Zealand</b>	<b>67.6%</b>	<b>2.0%</b>	<b>0.1%</b>	<b>5.2%</b>	<b>22.9%</b>

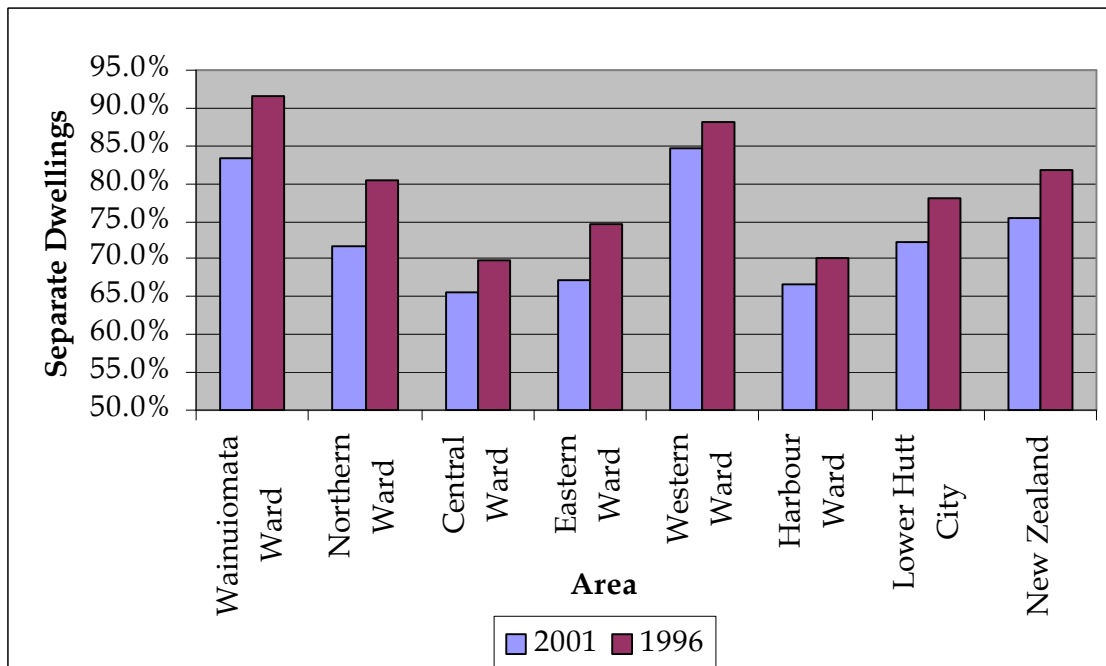
4.2 Household Composition, Size, and Number of Bedrooms

Figure 40: Size of Household and Number of Bedrooms

	Mean Number of Household Members			Mean Number of Bedrooms		
	2001	1996	1991	2001	1996	1991
<b>Lower Hutt City</b>	<b>2.7</b>	<b>2.8</b>	<b>2.8</b>	<b>3.0</b>	<b>2.9</b>	<b>2.8</b>
<b>Wainuiomata Ward</b>	<b>3.0</b>	<b>3.1</b>	<b>3.3</b>	<b>3.2</b>	<b>3.2</b>	<b>3.0</b>
1. Glendale	3.2	3.4	3.5	3.2	3.2	3.1
2. Parkway	3.0	3.1	3.3	3.1	3.1	3.0
3. Fernlea	3.0	3.1	3.2	3.2	3.2	3.1
4. Arakura	3.0	3.1	3.2	3.0	3.0	2.9
5. Homedale West	2.8	2.8	3.0	3.1	3.1	2.9
6. Homedale East	3.0	3.0	3.2	3.2	3.2	3.1
7. Pencarrow	2.7	3.0	3.4	3.3	3.5	3.3
<b>Northern Ward</b>	<b>2.9</b>	<b>2.9</b>	<b>3.0</b>	<b>3.0</b>	<b>2.9</b>	<b>2.9</b>
<i>Stokes Valley</i>	2.9	2.9	3.1	3.1	3.0	3.0
8. Tawhai	2.8	2.9	2.9	3.1	3.1	3.0
9. Holborn	2.9	3.0	3.2	3.1	3.0	3.0
10. Delaney	2.9	2.9	3.2	3.0	2.9	2.9
11. Manuka	2.8	2.9	3.1	3.3	3.2	3.2
12. Taita North	3.0	3.0	2.9	2.8	2.7	2.6
13. Taita South	2.7	2.8	2.7	2.8	2.6	2.6
<b>Central Ward</b>	<b>2.6</b>	<b>2.6</b>	<b>2.6</b>	<b>2.9</b>	<b>2.9</b>	<b>2.8</b>
14. Avalon East	2.5	2.6	2.5	2.7	2.7	2.6
15. Avalon West	2.4	2.5	2.6	2.9	2.9	2.9
16. Boulcott	2.6	2.7	2.7	3.0	2.8	2.8
17. Epuni West	2.4	2.5	2.4	2.8	2.8	2.6
18. Waterloo West	2.8	2.8	2.8	3.0	3.1	2.9
19. Hutt Central	2.6	2.7	2.7	3.2	3.1	3.0
20. Melling	2.4	2.4	2.5	2.5	2.5	2.4
21. Alicetown	2.4	2.5	2.5	2.6	2.6	2.5
22. Woburn North	2.9	2.9	2.9	3.4	3.3	3.2
<b>Eastern Ward</b>	<b>2.7</b>	<b>2.8</b>	<b>2.7</b>	<b>2.8</b>	<b>2.8</b>	<b>2.7</b>
23. Naenae North	2.7	2.9	2.8	2.8	2.8	2.6
24. Naenae South	2.8	2.8	2.8	2.8	2.8	2.7
25. Epuni East	2.6	2.7	2.6	2.8	2.9	2.7
26. Waterloo East	2.6	2.6	2.6	2.9	2.9	2.7
27. Waiwhetu North	2.7	2.7	2.6	2.7	2.7	2.6
<b>Western Ward</b>	<b>2.8</b>	<b>2.9</b>	<b>2.9</b>	<b>3.3</b>	<b>3.2</b>	<b>3.2</b>
28. Normandale	2.8	2.9	3.0	3.3	3.3	3.2
29. Maungaraki	2.6	2.8	2.9	3.2	3.1	3.1
30. Belmont	2.9	3.0	3.0	3.4	3.3	3.2
31. Kelson	2.8	2.9	2.9	3.2	3.2	3.1
32. Haywards-Manor Park	2.6	2.5	2.7	3.1	2.9	2.8
<b>Harbour Ward</b>	<b>2.6</b>	<b>2.6</b>	<b>2.6</b>	<b>2.8</b>	<b>2.8</b>	<b>2.7</b>
33. Waiwhetu South	2.4	2.5	2.5	2.7	2.6	2.5
34. Gracefield	2.4	2.4	2.1	2.4	2.4	2.3
35. Moera	2.7	2.7	2.7	2.5	2.5	2.4
36. Woburn South	2.3	2.4	2.4	2.4	2.4	2.3
37. Korokoro	2.6	2.6	2.6	3.1	3.1	3.0
<i>Petone</i>	2.6	2.7	2.7	2.7	2.7	2.6
38. Petone Central	2.5	2.6	2.6	2.6	2.6	2.6
39. Esplanade	2.5	2.5	2.6	2.6	2.6	2.5
40. Wilford	2.5	2.6	2.6	2.6	2.6	2.5
41. Eastbourne	2.5	2.5	2.5	3.1	3.0	2.9
Kapiti Coast District	2.4	2.4	2.5	2.9	2.9	2.8
Porirua City	3.1	3.2	3.3	3.2	3.1	3.1
Upper Hutt	2.7	2.8	2.9	3.0	3.0	2.9
Wellington City	2.6	2.6	2.6	2.9	2.8	2.8
<b>New Zealand</b>	<b>2.7</b>	<b>2.8</b>	<b>2.8</b>	<b>3.0</b>	<b>3.0</b>	<b>2.9</b>

### 4.3 Dwelling Type

Figure 41: Separate Houses



All the wards in Hutt City are experiencing a reduction in the proportion of separate houses in an area. As Figure 41 shows, this is consistent with the percentages for both Hutt City and New Zealand. In fact there are only two area units in Hutt City where the proportion of separate houses is increasing, Woburn North and Haywards-Manor Park (see Figure 43).

The Western Hills (Western Ward and Korokoro), Wainuiomata, Stokes Valley, and Eastbourne are all characterised by one family separate housing. This suggests that the majority of infill and higher density housing has occurred on the floor of the Hutt Valley.

Figure 42: Separate Houses and Number of Bedrooms

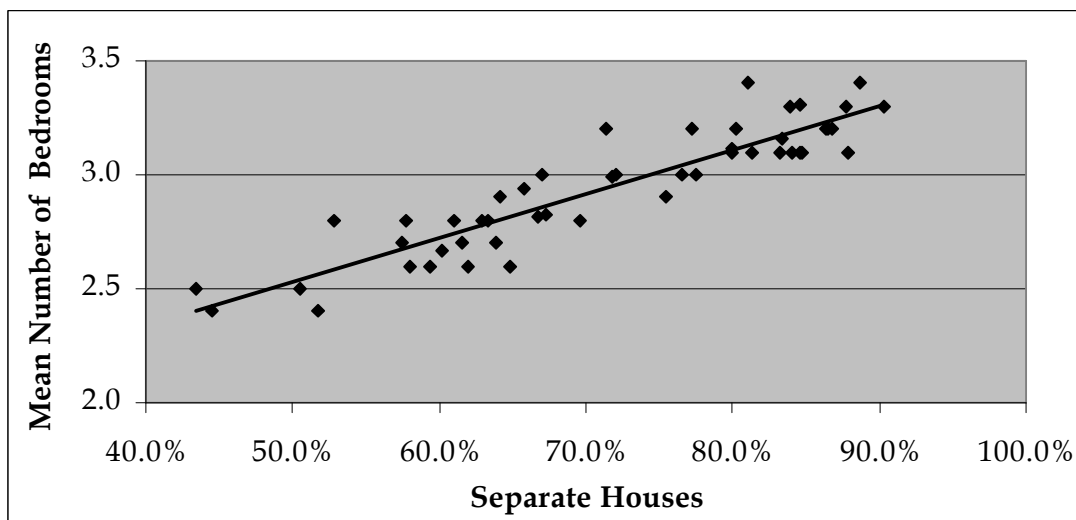


Figure 42 shows that there is a strong correlation between the percentage of separate houses in an area and the mean number of bedrooms in the area. This indicates that separate houses are larger than other forms of dwellings.

### 4.3 Dwelling Type

Figure 43: Dwelling Type

	2001			1996		
	Separate House	Other Private Dwelling	Non-Private Dwellings	Separate House	Other Private Dwelling	Non-Private Dwellings
<b>Lower Hutt City</b>	<b>72.2%</b>	<b>27.5%</b>	<b>0.2%</b>	<b>78.0%</b>	<b>21.7%</b>	<b>0.3%</b>
<b>Wainuiomata Ward</b>	<b>83.3%</b>	<b>16.5%</b>	<b>0.0%</b>	<b>91.7%</b>	<b>8.1%</b>	<b>0.2%</b>
1. Glendale	86.3%	13.7%	0.0%	95.7%	4.6%	0.0%
2. Parkway	83.2%	17.1%	0.0%	90.2%	9.2%	0.0%
3. Fernlea	80.3%	19.3%	0.0%	94.0%	6.0%	0.0%
4. Arakura	76.5%	23.1%	0.0%	84.0%	15.7%	0.3%
5. Homedale West	84.6%	15.4%	0.0%	90.8%	9.6%	0.0%
6. Homedale East	86.5%	13.2%	0.0%	93.7%	6.0%	0.3%
7. Pencarrow	83.9%	14.3%	0.0%	96.4%	0.0%	1.8%
<b>Northern Ward</b>	<b>71.7%</b>	<b>28.0%</b>	<b>0.2%</b>	<b>80.4%</b>	<b>19.2%</b>	<b>0.2%</b>
<i>Stokes Valley</i>	<i>79.9%</i>	<i>19.8%</i>	<i>0.1%</i>	<i>88.3%</i>	<i>11.3%</i>	<i>0.3%</i>
8. Tawhai	81.3%	18.2%	0.3%	90.4%	9.1%	0.3%
9. Holborn	84.0%	15.6%	0.0%	90.7%	8.8%	0.4%
10. Delaney	67.0%	33.0%	0.0%	80.3%	19.7%	0.0%
11. Manuka	90.3%	9.7%	0.0%	92.1%	7.3%	0.5%
12. Taita North	52.8%	46.9%	0.3%	65.3%	34.0%	0.0%
13. Taita South	62.9%	36.8%	0.3%	69.1%	30.9%	0.0%
<b>Central Ward</b>	<b>65.7%</b>	<b>33.8%</b>	<b>0.4%</b>	<b>69.9%</b>	<b>29.6%</b>	<b>0.4%</b>
14. Avalon East	57.4%	41.9%	0.7%	68.9%	31.1%	0.0%
15. Avalon West	64.2%	35.8%	0.0%	71.0%	28.6%	0.0%
16. Boulcott	72.1%	27.6%	0.3%	74.3%	25.1%	0.7%
17. Epuni West	57.7%	42.1%	0.5%	61.8%	37.7%	0.5%
18. Waterloo West	77.5%	22.5%	0.0%	79.8%	20.2%	0.0%
19. Hutt Central	71.4%	28.2%	0.5%	73.4%	25.9%	0.7%
20. Melling	43.4%	53.9%	2.6%	48.5%	48.5%	2.9%
21. Alicetown	64.8%	35.2%	0.0%	66.2%	33.8%	0.0%
22. Woburn North	81.0%	17.6%	0.7%	80.7%	18.0%	0.7%
<b>Eastern Ward</b>	<b>67.2%</b>	<b>32.6%</b>	<b>0.1%</b>	<b>74.5%</b>	<b>25.4%</b>	<b>0.2%</b>
23. Naenae North	63.4%	36.1%	0.4%	75.2%	24.8%	0.2%
24. Naenae South	69.6%	30.4%	0.0%	80.0%	20.0%	0.0%
25. Epuni East	61.0%	39.0%	0.3%	64.0%	35.4%	0.5%
26. Waterloo East	75.4%	24.4%	0.0%	80.0%	20.2%	0.0%
27. Waiwhetu North	61.5%	38.5%	0.0%	64.7%	35.3%	0.0%
<b>Western Ward</b>	<b>84.6%</b>	<b>15.4%</b>	<b>0.0%</b>	<b>88.2%</b>	<b>11.6%</b>	<b>0.1%</b>
28. Normandale	87.7%	12.3%	0.0%	92.0%	8.0%	0.0%
29. Maungaraki	77.3%	22.5%	0.0%	80.3%	19.5%	0.0%
30. Belmont	88.7%	11.5%	0.0%	92.5%	7.0%	0.0%
31. Kelson	86.8%	13.2%	0.0%	91.0%	9.0%	0.0%
32. Haywards-Manor Park	87.8%	12.2%	0.0%	87.1%	12.9%	3.2%
<b>Harbour Ward</b>	<b>66.7%</b>	<b>32.9%</b>	<b>0.3%</b>	<b>70.0%</b>	<b>29.7%</b>	<b>0.4%</b>
33. Waiwhetu South	63.9%	35.8%	0.3%	65.4%	34.6%	0.0%
34. Gracefield	44.4%	44.4%	11.1%	62.5%	37.5%	12.5%
35. Moera	50.5%	49.5%	0.0%	53.2%	46.3%	0.5%
36. Woburn South	51.7%	48.3%	0.0%	54.1%	45.9%	0.0%
37. Korokoro	84.8%	14.6%	0.0%	93.2%	6.8%	0.0%
<i>Petone</i>	<i>60.2%</i>	<i>39.3%</i>	<i>0.5%</i>	<i>63.7%</i>	<i>35.9%</i>	<i>0.7%</i>
38. Petone Central	58.0%	40.2%	1.8%	59.6%	38.6%	1.8%
39. Esplanade	61.9%	37.5%	0.3%	65.1%	34.9%	0.3%
40. Wilford	59.4%	40.4%	0.2%	63.6%	35.9%	0.7%
41. Eastbourne	79.9%	20.1%	0.2%	82.1%	17.7%	0.0%
<b>Kapiti Coast District</b>	<b>79.3%</b>	<b>20.3%</b>	<b>0.4%</b>	<b>86.8%</b>	<b>12.7%</b>	<b>0.5%</b>
Porirua City	75.3%	24.3%	0.4%	86.1%	13.7%	0.3%
Upper Hutt	74.3%	25.4%	0.4%	78.0%	21.7%	0.3%
Wellington City	62.4%	37.2%	0.4%	66.7%	32.9%	0.4%
<b>New Zealand</b>	<b>75.3%</b>	<b>24.1%</b>	<b>0.6%</b>	<b>81.8%</b>	<b>17.6%</b>	<b>0.6%</b>

#### 4.4 Tenure & Nature of Landlord

In terms of Wards, the Western Ward clearly has the highest rate of home ownership, followed by Wainuiomata Ward. Gracefield, Moera, and Taita North had the lowest rate of home ownership. Figure 44 shows the rate of ownership for occupied dwellings where somebody within the household owns or partly owns the dwelling.

Figure 45 shows that the highest rate of home ownership was in the area unit of Manuka (Stokes Valley), where 84.1% of residents owned (or partly owned) the dwelling they live in. In both Hutt City and New Zealand the rate of home ownership has decreased. The rate of home ownership increased in only seven of the forty one area units in Hutt City. The largest increase occurred in Haywards-Manor Park.

Figure 46 shows that Taita, and Naenae had a high proportion of the rented dwellings owned by somebody other than a private person or trust. Moera also had a reasonably high percentage of rented dwellings owned by 'Other'.

The 'Other' category includes (but is not limited to) houses owned by Housing New Zealand, Territorial Authorities, and Central Government. In Hutt City, compared to New Zealand, there is a much higher proportion of rented dwellings where the sector of landlord falls into the 'Other' category. This is a reflection on the large number of state houses built in Hutt City.

Figure 44: Ownership of Dwellings

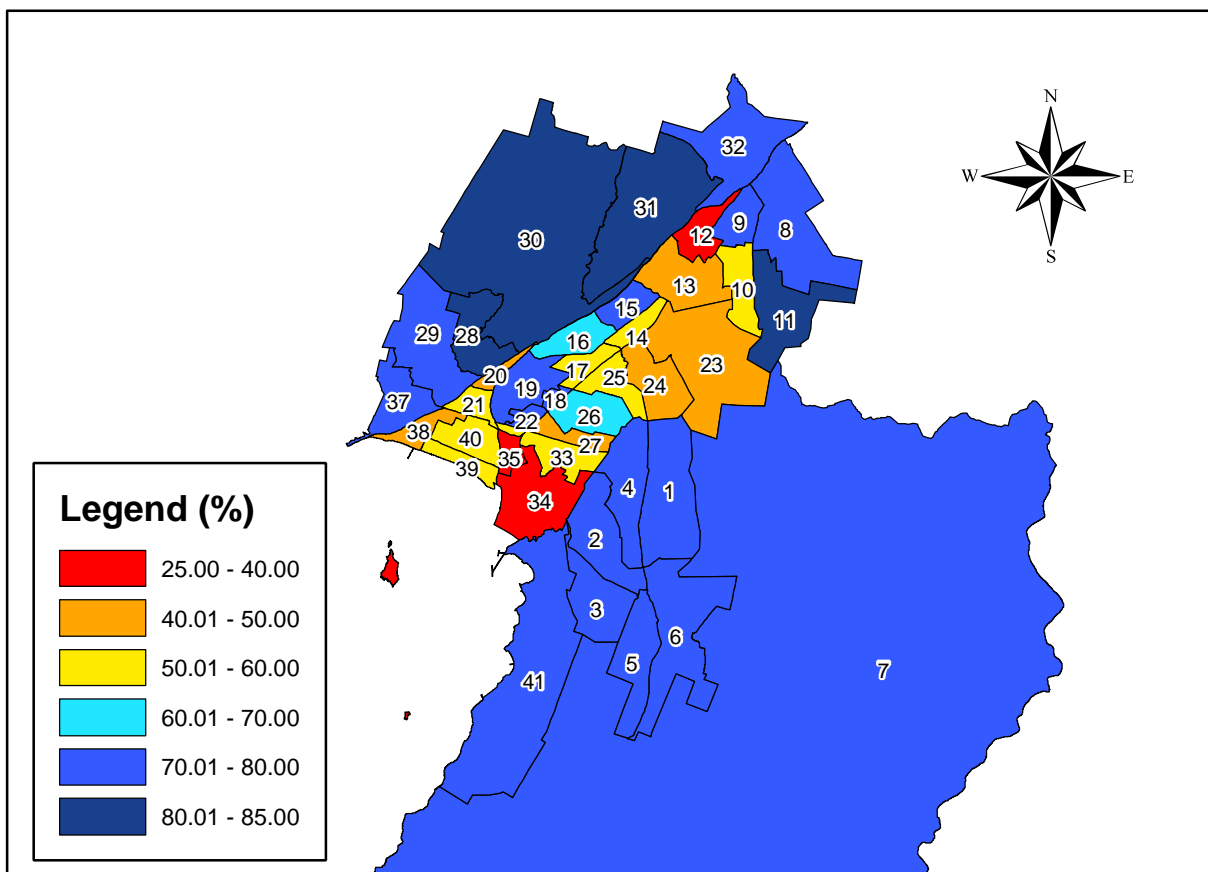


Figure 45: Tenure of Households in Private Occupied Dwellings

	Dwelling Owned or Partly Owned by Usual Resident(s)		Dwelling Not Owned by Usual Resident(s)	
	2001	1996	2001	1996
<b>Lower Hutt City</b>	<b>64.6%</b>	<b>67.5%</b>	<b>32.1%</b>	<b>28.8%</b>
<b>Wainuiomata Ward</b>	<b>74.5%</b>	<b>79.6%</b>	<b>22.5%</b>	<b>16.7%</b>
1. Glendale	71.4%	78.6%	25.3%	18.2%
2. Parkway	75.6%	81.7%	21.6%	15.5%
3. Fernlea	75.5%	79.3%	22.7%	15.7%
4. Arakura	72.1%	76.8%	25.7%	18.2%
5. Homedale West	73.8%	78.0%	23.1%	19.6%
6. Homedale East	78.4%	83.5%	18.0%	12.9%
7. Pencarrow	76.4%	73.6%	18.2%	18.9%
<b>Northern Ward</b>	<b>60.5%</b>	<b>62.5%</b>	<b>35.2%</b>	<b>32.6%</b>
<i>Stokes Valley</i>	<i>71.9%</i>	<i>74.2%</i>	<i>24.5%</i>	<i>21.6%</i>
8. Tawhai	77.5%	80.4%	20.0%	16.3%
9. Holborn	71.7%	75.1%	26.1%	22.2%
10. Delaney	55.5%	58.1%	38.5%	34.9%
11. Manuka	84.1%	83.2%	11.8%	13.2%
12. Taita North	35.9%	39.3%	58.4%	54.0%
13. Taita South	45.9%	45.8%	48.6%	48.5%
<b>Central Ward</b>	<b>64.9%</b>	<b>67.2%</b>	<b>32.1%</b>	<b>29.9%</b>
14. Avalon East	50.3%	52.7%	46.2%	45.2%
15. Avalon West	72.6%	77.9%	24.1%	19.9%
16. Boulcott	69.8%	69.1%	27.1%	27.3%
17. Epuni West	57.0%	59.3%	39.6%	38.4%
18. Waterloo West	75.5%	74.3%	22.7%	21.1%
19. Hutt Central	72.7%	74.3%	24.7%	37.9%
20. Melling	44.4%	59.1%	45.8%	22.7%
21. Alicetown	59.2%	61.8%	38.8%	35.5%
22. Woburn North	76.7%	79.1%	21.3%	16.9%
<b>Eastern Ward</b>	<b>54.4%</b>	<b>56.4%</b>	<b>42.8%</b>	<b>40.5%</b>
23. Naenae North	44.0%	47.9%	52.1%	48.9%
24. Naenae South	47.7%	50.0%	49.6%	44.4%
25. Epuni East	58.3%	58.9%	38.7%	39.2%
26. Waterloo East	68.9%	70.1%	29.2%	28.0%
27. Waiwhetu North	48.2%	49.1%	49.4%	47.9%
<b>Western Ward</b>	<b>79.4%</b>	<b>81.9%</b>	<b>18.6%</b>	<b>14.5%</b>
28. Normandale	83.5%	81.1%	13.6%	10.5%
29. Maungaraki	75.2%	79.2%	22.4%	18.6%
30. Belmont	80.5%	86.8%	17.2%	10.6%
31. Kelson	80.5%	81.7%	18.9%	15.7%
32. Haywards-Manor Park	78.0%	71.0%	22.0%	25.8%
<b>Harbour Ward</b>	<b>59.2%</b>	<b>62.7%</b>	<b>36.5%</b>	<b>33.4%</b>
33. Waiwhetu South	57.3%	60.2%	38.6%	36.4%
34. Gracefield	28.6%	33.3%	57.1%	66.7%
35. Moera	30.8%	36.5%	63.2%	58.5%
36. Woburn South	50.8%	50.8%	45.8%	45.9%
37. Korokoro	77.8%	79.4%	18.5%	16.9%
<i>Petone</i>	<i>51.5%</i>	<i>55.6%</i>	<i>43.6%</i>	<i>39.7%</i>
38. Petone Central	48.6%	51.8%	45.0%	44.5%
39. Esplanade	54.1%	56.0%	39.9%	38.1%
40. Wilford	50.3%	56.3%	45.9%	39.8%
41. Eastbourne	76.6%	79.3%	20.3%	17.9%
Kapiti Coast District	74.4%	77.6%	22.1%	18.2%
Porirua City	60.0%	61.8%	35.8%	31.7%
Upper Hutt	71.5%	75.4%	25.7%	22.2%
Wellington City	58.9%	62.7%	36.5%	33.5%
<b>New Zealand</b>	<b>64.6%</b>	<b>67.9%</b>	<b>30.7%</b>	<b>28.2%</b>

Figure 46: Sector of Landlord for Rented Dwellings

	<b>Private Person or Trust</b>	<b>Other</b>	<b>Not Elsewhere Included</b>
<b>Lower Hutt City</b>	<b>56.4%</b>	<b>38.8%</b>	<b>4.8%</b>
<b>Wainuiomata Ward</b>	<b>82.6%</b>	<b>12.9%</b>	<b>4.4%</b>
1. Glendale	80.2%	16.0%	3.7%
2. Parkway	88.7%	8.1%	3.2%
3. Fernlea	90.7%	4.7%	2.3%
4. Arakura	85.9%	10.9%	4.7%
5. Homedale West	69.1%	27.3%	5.5%
6. Homedale East	84.6%	9.6%	5.8%
7. Pencarrow	66.7%	0.0%	16.7%
<b>Northern Ward</b>	<b>41.9%</b>	<b>54.3%</b>	<b>4.0%</b>
<i>Stokes Valley</i>	<i>62.4%</i>	<i>33.6%</i>	<i>3.9%</i>
8. Tawhai	90.2%	6.6%	4.9%
9. Holborn	65.5%	30.9%	3.6%
10. Delaney	37.2%	58.5%	3.2%
11. Manuka	89.5%	5.3%	5.3%
12. Taita North	25.9%	69.9%	4.8%
13. Taita South	28.6%	68.2%	3.2%
<b>Central Ward</b>	<b>58.9%</b>	<b>34.3%</b>	<b>6.4%</b>
14. Avalon East	36.6%	58.5%	4.1%
15. Avalon West	63.5%	34.6%	3.8%
16. Boulcott	61.8%	27.9%	8.8%
17. Eponi West	47.8%	48.5%	3.7%
18. Waterloo West	57.9%	42.1%	5.3%
19. Hutt Central	78.2%	12.8%	9.0%
20. Melling	71.0%	16.1%	12.9%
21. Alicetown	74.2%	15.1%	9.7%
22. Woburn North	85.7%	4.8%	4.8%
<b>Eastern Ward</b>	<b>40.3%</b>	<b>56.1%</b>	<b>3.4%</b>
23. Naenae North	34.7%	61.4%	3.9%
24. Naenae South	35.9%	62.0%	1.6%
25. Eponi East	46.3%	49.3%	5.2%
26. Waterloo East	50.8%	45.2%	4.0%
27. Waiwhetu North	42.3%	53.8%	2.6%
<b>Western Ward</b>	<b>88.6%</b>	<b>5.2%</b>	<b>7.6%</b>
28. Normandale	88.5%	7.7%	0.0%
29. Maungaraki	91.1%	1.3%	7.6%
30. Belmont	83.3%	8.3%	10.4%
31. Kelson	91.8%	4.1%	8.2%
32. Haywards-Manor Park	75.0%	25.0%	12.5%
<b>Harbour Ward</b>	<b>60.6%</b>	<b>34.8%</b>	<b>5.2%</b>
33. Waiwhetu South	52.4%	42.7%	4.9%
34. Gracefield	66.7%	33.3%	33.3%
35. Moera	41.8%	54.1%	4.1%
36. Woburn South	68.0%	32.0%	4.0%
37. Korokoro	88.0%	4.0%	8.0%
<i>Petone</i>	<i>59.8%</i>	<i>35.4%</i>	<i>5.1%</i>
38. Petone Central	84.8%	10.9%	6.5%
39. Esplanade	56.7%	39.2%	4.2%
40. Wilford	55.8%	38.9%	5.3%
41. Eastbourne	87.9%	6.6%	6.6%
Kapiti Coast District	81.0%	13.9%	5.1%
Porirua City	45.3%	51.9%	2.8%
Upper Hutt	69.9%	23.3%	7.0%
Wellington City	72.3%	21.2%	6.5%
<b>New Zealand</b>	<b>69.9%</b>	<b>24.1%</b>	<b>5.9%</b>

### 4.5 Rent

Figure 47 shows that the highest average rents are charged along the Western Hills, near the Central Business District and within the Eastbourne area unit.

The average weekly rent in Hutt City is about the same as it was in 1996. Figure 48 shows that there has been significant variation within individual area units. The highest increase in rent between 1996-2001 occurred in Eastbourne (\$38). The rent in Hutt Central, Kelson, and Wilford also increased by over \$30.

The largest decrease in weekly rent between 1996-2001 occurred in Delaney (\$34). Naenae and Taita also experienced rent decreases of over \$20. The average rent amounts do not take the size of the dwelling into account. Naenae and Taita North both experienced large amounts of growth in the proportion of 'Other Private Dwellings' (not a 'separate house'). This may mean that more of the rented dwellings are joined flats or apartments and this could be the reason for the reduction in average rent.

Figure 47: Average Weekly Rent

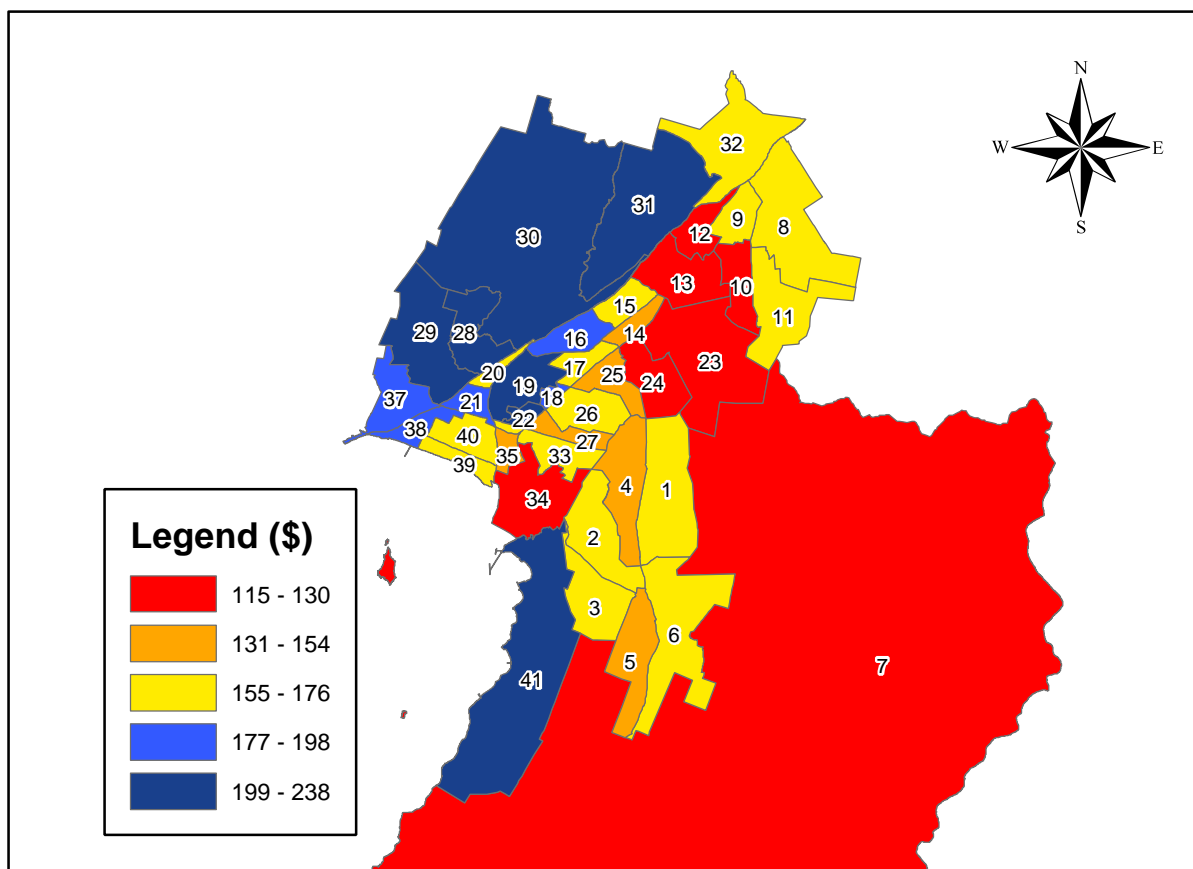


Figure 48: Average Weekly Rent

	2001	1996	1991	Increase 1996-2001		Increase 1991-2001	
<b>Lower Hutt City</b>	<b>\$160</b>	<b>\$161</b>	<b>\$116</b>	<b>-\$1</b>	<b>-0.6%</b>	<b>\$44</b>	<b>37.9%</b>
<b>Wainuiomata Ward</b>	<b>\$154</b>	<b>\$141</b>	<b>\$115</b>	<b>\$13</b>	<b>9.2%</b>	<b>\$38</b>	<b>33.0%</b>
1. Glendale	\$165	\$161	\$116	\$4	2.5%	\$49	42.2%
2. Parkway	\$168	\$168	\$142	\$0	0.0%	\$26	18.3%
3. Fernlea	\$163	\$156	\$149	\$7	4.5%	\$14	9.4%
4. Arakura	\$154	\$153	\$129	\$1	0.7%	\$25	19.4%
5. Homedale West	\$139	\$146	\$114	-\$7	-4.8%	\$25	21.9%
6. Homedale East	\$166	\$162	\$131	\$4	2.5%	\$35	26.7%
7. Pencarrow	\$127	\$117	\$91	\$10	8.5%	\$36	39.6%
<b>Northern Ward</b>	<b>\$146</b>	<b>\$152</b>	<b>\$106</b>	<b>-\$5</b>	<b>-3.5%</b>	<b>\$40</b>	<b>37.5%</b>
<i>Stokes Valley</i>	<i>\$156</i>	<i>\$152</i>	<i>\$119</i>	<i>\$4</i>	<i>2.8%</i>	<i>\$38</i>	<i>31.8%</i>
8. Tawhai	\$171	\$159	\$146	\$12	7.5%	\$25	17.1%
9. Holborn	\$160	\$164	\$116	-\$4	-2.4%	\$44	37.9%
10. Delaney	\$119	\$153	\$87	-\$34	-22.2%	\$32	36.8%
11. Manuka	\$174	\$179	\$150	-\$5	-2.8%	\$24	16.0%
12. Taita North	\$115	\$137	\$78	-\$22	-16.1%	\$37	47.4%
13. Taita South	\$130	\$150	\$87	-\$20	-13.3%	\$43	49.4%
<b>Central Ward</b>	<b>\$206</b>	<b>\$186</b>	<b>\$156</b>	<b>\$20</b>	<b>10.7%</b>	<b>\$50</b>	<b>31.8%</b>
14. Avalon East	\$140	\$152	\$91	-\$12	-7.9%	\$49	53.8%
15. Avalon West	\$173	\$169	\$132	\$4	2.4%	\$41	31.1%
16. Boulcott	\$191	\$176	\$138	\$15	8.5%	\$53	38.4%
17. Epuni West	\$159	\$165	\$101	-\$6	-3.6%	\$58	57.4%
18. Waterloo West	\$198	\$189	\$146	\$9	4.8%	\$52	35.6%
19. Hutt Central	\$234	\$202	\$188	\$32	15.8%	\$46	24.5%
20. Melling	\$176	\$160	\$167	\$16	10.0%	\$9	5.4%
21. Alicetown	\$182	\$168	\$146	\$14	8.3%	\$36	24.7%
22. Woburn North	\$220	\$208	\$189	\$12	5.8%	\$31	16.4%
<b>Eastern Ward</b>	<b>\$151</b>	<b>\$160</b>	<b>\$103</b>	<b>-\$9</b>	<b>-5.9%</b>	<b>\$48</b>	<b>46.7%</b>
23. Naenae North	\$127	\$154	\$87	-\$27	-17.5%	\$40	46.0%
24. Naenae South	\$129	\$153	\$89	-\$24	-15.7%	\$40	44.9%
25. Epuni East	\$147	\$158	\$101	-\$11	-7.0%	\$46	45.5%
26. Waterloo East	\$163	\$173	\$104	-\$10	-5.8%	\$59	56.7%
27. Waiwhetu North	\$148	\$151	\$105	-\$3	-2.0%	\$43	41.0%
<b>Western Ward</b>	<b>\$200</b>	<b>\$177</b>	<b>\$166</b>	<b>\$23</b>	<b>12.9%</b>	<b>\$34</b>	<b>20.7%</b>
28. Normandale	\$218	\$205	\$203	\$13	6.3%	\$15	7.4%
29. Maungaraki	\$212	\$185	\$172	\$27	14.6%	\$40	23.3%
30. Belmont	\$213	\$194	\$192	\$19	9.8%	\$21	10.9%
31. Kelson	\$216	\$185	\$183	\$31	16.8%	\$33	18.0%
32. Haywards-Manor Park	\$171	\$151	\$131	\$20	13.2%	\$40	30.5%
<b>Harbour Ward</b>	<b>\$202</b>	<b>\$172</b>	<b>\$147</b>	<b>\$31</b>	<b>17.8%</b>	<b>\$56</b>	<b>37.9%</b>
33. Waiwhetu South	\$157	\$153	\$113	\$4	2.6%	\$44	38.9%
34. Gracefield	\$130	\$108	\$106	\$22	20.4%	\$24	22.6%
35. Moera	\$137	\$146	\$104	-\$9	-6.2%	\$33	31.7%
36. Woburn South	\$173	\$168	\$129	\$5	3.0%	\$44	34.1%
37. Korokoro	\$179	\$171	\$161	\$8	4.7%	\$18	11.2%
<i>Petone</i>	<i>\$192</i>	<i>\$167</i>	<i>\$144</i>	<i>\$26</i>	<i>15.6%</i>	<i>\$48</i>	<i>33.2%</i>
38. Petone Central	\$183	\$167	\$148	\$16	9.6%	\$35	23.6%
39. Esplanade	\$174	\$163	\$128	\$11	6.7%	\$46	35.9%
40. Wilford	\$176	\$145	\$119	\$31	21.4%	\$57	47.9%
41. Eastbourne	\$238	\$200	\$174	\$38	19.0%	\$64	36.8%
Kapiti Coast District	\$171	\$144	\$117	\$27	18.8%	\$54	46.2%
Porirua City	\$145	\$162	\$102	-\$17	-10.5%	\$43	42.2%
Upper Hutt	\$161	\$151	\$126	\$10	6.6%	\$35	27.8%
Wellington City	\$234	\$190	\$164	\$44	23.2%	\$70	42.7%
<b>New Zealand</b>	<b>\$174</b>	<b>\$161</b>	<b>\$118</b>	<b>\$13</b>	<b>8.1%</b>	<b>\$56</b>	<b>47.5%</b>

### 4.6 Motor Vehicles per Private Dwelling

Figure 49 shows that the access to a motor vehicle has increased in Hutt City, in line with New Zealand. Compared with New Zealand, Hutt City has a higher percentage of households that do not own a motor vehicle. However, this may be related to the public transport systems that are available in Hutt City and the fact that Hutt City is predominately urban.

Figure 49: Access to a Motor Vehicle

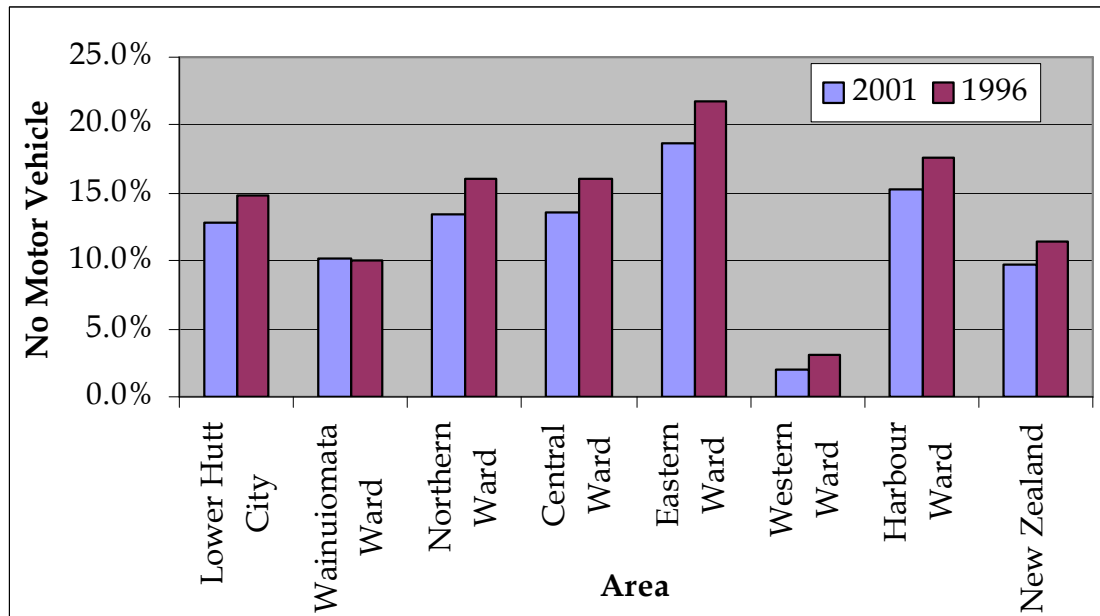


Figure 49 shows that it is only in the Wainuiomata Ward where access to a motor vehicle has decreased, but this is by only 0.1%. Arakura had the highest increase in the number of dwellings that do not have a motor vehicle (2%). Taita North and Waiwhetu North were amongst the highest area units that did not own a motor vehicle in 1996. Both of these area units experienced a major decrease in the percentage that do not own a motor vehicle, decreases of 7.2% and 8.8% respectively.

The Western Ward, Korokoro, Manuka, Pencarrow, and Woburn North all have a high percentage of dwellings with access to two or more motor vehicles; as shown in Figure 50.

Figure 50: Number of Motor Vehicles per Household

	2001				1996			
	No Motor Vehicle	One Motor Vehicle	Two Motor Vehicles	Three or more Motor Vehicles	No Motor Vehicle	One Motor Vehicle	Two Motor Vehicles	Three or more Motor Vehicles
<b>Lower Hutt City</b>	<b>12.8%</b>	<b>42.3%</b>	<b>31.9%</b>	<b>9.9%</b>	<b>14.8%</b>	<b>42.6%</b>	<b>29.7%</b>	<b>8.8%</b>
<b>Wainuiomata Ward</b>	<b>10.1%</b>	<b>42.5%</b>	<b>32.9%</b>	<b>11.7%</b>	<b>10.0%</b>	<b>45.1%</b>	<b>31.5%</b>	<b>9.7%</b>
1. Glendale	9.9%	41.2%	33.0%	12.1%	11.3%	46.8%	29.8%	9.1%
2. Parkway	9.9%	43.8%	35.2%	9.9%	9.0%	46.1%	32.5%	9.6%
3. Fernlea	10.6%	42.1%	33.8%	12.5%	9.2%	43.3%	30.9%	10.1%
4. Arakura	11.8%	45.0%	30.0%	11.1%	9.8%	46.0%	29.5%	8.8%
5. Homedale West	12.8%	41.4%	31.0%	11.7%	14.0%	46.2%	30.5%	7.2%
6. Homedale East	8.0%	44.2%	33.0%	10.6%	8.1%	45.0%	33.9%	9.9%
7. Pencarrow	1.8%	25.5%	38.2%	27.3%	1.9%	22.6%	39.6%	30.2%
<b>Northern Ward</b>	<b>13.5%</b>	<b>43.1%</b>	<b>29.4%</b>	<b>9.6%</b>	<b>16.1%</b>	<b>42.4%</b>	<b>26.9%</b>	<b>8.8%</b>
<i>Stokes Valley</i>	8.3%	42.0%	34.6%	11.7%	9.2%	41.9%	33.6%	10.9%
8. Tawhai	6.0%	42.5%	36.4%	12.6%	5.2%	42.5%	36.7%	11.9%
9. Holborn	7.8%	43.9%	36.1%	10.4%	8.4%	43.1%	34.7%	10.7%
10. Delaney	15.1%	46.4%	26.4%	6.0%	17.4%	43.4%	25.2%	5.8%
11. Manuka	4.1%	33.2%	40.3%	19.4%	6.3%	37.4%	37.9%	16.3%
12. Taita North	23.5%	45.0%	19.1%	4.7%	30.5%	42.5%	13.3%	5.3%
13. Taita South	20.9%	44.8%	22.1%	7.0%	25.3%	43.8%	17.6%	5.4%
<b>Central Ward</b>	<b>13.6%</b>	<b>42.4%</b>	<b>32.2%</b>	<b>9.6%</b>	<b>16.0%</b>	<b>41.9%</b>	<b>29.9%</b>	<b>9.2%</b>
14. Avalon East	21.3%	48.3%	20.6%	7.0%	25.1%	47.7%	18.6%	5.4%
15. Avalon West	12.7%	42.5%	31.0%	10.8%	11.6%	44.2%	31.2%	10.5%
16. Boulcott	11.5%	42.0%	34.9%	9.5%	12.5%	41.8%	31.3%	10.2%
17. Epuni West	17.6%	43.5%	28.8%	7.3%	22.8%	42.2%	25.8%	7.2%
18. Waterloo West	12.6%	40.5%	37.8%	8.1%	12.8%	41.3%	30.3%	11.0%
19. Hutt Central	9.1%	38.1%	39.7%	11.9%	11.4%	35.3%	39.5%	11.0%
20. Melling	12.5%	48.6%	22.2%	9.7%	19.7%	48.5%	19.7%	7.6%
21. Alicetown	16.5%	44.5%	29.1%	8.3%	18.1%	47.5%	25.1%	6.6%
22. Woburn North	4.0%	35.3%	44.7%	14.7%	6.8%	33.8%	41.2%	15.5%
<b>Eastern Ward</b>	<b>18.7%</b>	<b>44.7%</b>	<b>26.3%</b>	<b>7.6%</b>	<b>21.8%</b>	<b>43.8%</b>	<b>24.1%</b>	<b>6.6%</b>
23. Naenae North	26.0%	45.0%	18.8%	6.4%	27.3%	45.4%	18.9%	4.4%
24. Naenae South	21.1%	41.4%	27.4%	6.8%	23.2%	43.5%	22.2%	5.8%
25. Epuni East	16.4%	43.5%	28.5%	8.6%	21.4%	41.1%	27.1%	7.7%
26. Waterloo East	11.2%	47.5%	31.3%	8.9%	13.8%	45.6%	29.5%	8.7%
27. Waiwhetu North	19.4%	45.3%	25.9%	7.1%	28.2%	40.6%	20.6%	5.9%
<b>Western Ward</b>	<b>2.1%</b>	<b>34.5%</b>	<b>46.1%</b>	<b>15.4%</b>	<b>3.1%</b>	<b>35.9%</b>	<b>44.1%</b>	<b>14.0%</b>
28. Normandale	1.6%	32.5%	45.7%	16.9%	1.7%	32.9%	45.1%	13.5%
29. Maungaraki	2.9%	37.1%	44.3%	13.8%	3.9%	39.1%	40.3%	14.7%
30. Belmont	1.8%	29.8%	48.1%	18.0%	3.1%	31.1%	48.2%	15.7%
31. Kelson	1.3%	37.4%	47.4%	13.2%	2.7%	38.7%	44.3%	12.3%
32. Haywards-Manor Park	5.0%	42.5%	37.5%	15.0%	6.5%	45.2%	35.5%	6.5%
<b>Harbour Ward</b>	<b>15.3%</b>	<b>44.3%</b>	<b>28.6%</b>	<b>7.6%</b>	<b>17.7%</b>	<b>44.2%</b>	<b>26.6%</b>	<b>6.7%</b>
33. Waiwhetu South	18.4%	46.1%	24.2%	6.8%	21.4%	46.9%	22.1%	5.1%
34. Gracefield	0.0%	57.1%	14.3%	14.3%	16.7%	50.0%	16.7%	16.7%
35. Moera	26.4%	46.3%	16.4%	4.0%	29.5%	44.0%	16.0%	4.0%
36. Woburn South	15.5%	56.9%	19.0%	6.9%	14.8%	52.5%	23.0%	4.9%
37. Korokoro	3.1%	40.1%	43.2%	11.1%	6.3%	40.6%	37.5%	10.6%
<i>Petone</i>	20.3%	44.8%	23.9%	6.2%	22.8%	44.7%	20.8%	5.7%
38. Petone Central	14.7%	47.7%	25.7%	6.4%	19.8%	44.1%	22.5%	6.3%
39. Esplanade	20.4%	45.6%	23.3%	4.7%	25.8%	44.7%	17.3%	5.7%
40. Wilford	21.5%	43.5%	24.0%	7.2%	21.4%	44.8%	23.0%	5.5%
41. Eastbourne	6.5%	41.8%	38.7%	10.3%	8.2%	42.5%	37.8%	8.8%
Kapiti Coast District	9.5%	46.6%	32.2%	9.1%	10.5%	48.4%	29.6%	7.0%
Porirua City	13.8%	38.1%	33.4%	10.8%	16.4%	38.9%	29.2%	8.4%
Upper Hutt	11.1%	41.5%	33.3%	11.9%	12.1%	44.4%	31.0%	9.7%
Wellington City	14.1%	44.7%	28.8%	8.2%	15.9%	45.3%	27.1%	7.7%
<b>New Zealand</b>	<b>9.7%</b>	<b>39.1%</b>	<b>34.5%</b>	<b>12.6%</b>	<b>11.4%</b>	<b>40.9%</b>	<b>32.1%</b>	<b>11.3%</b>

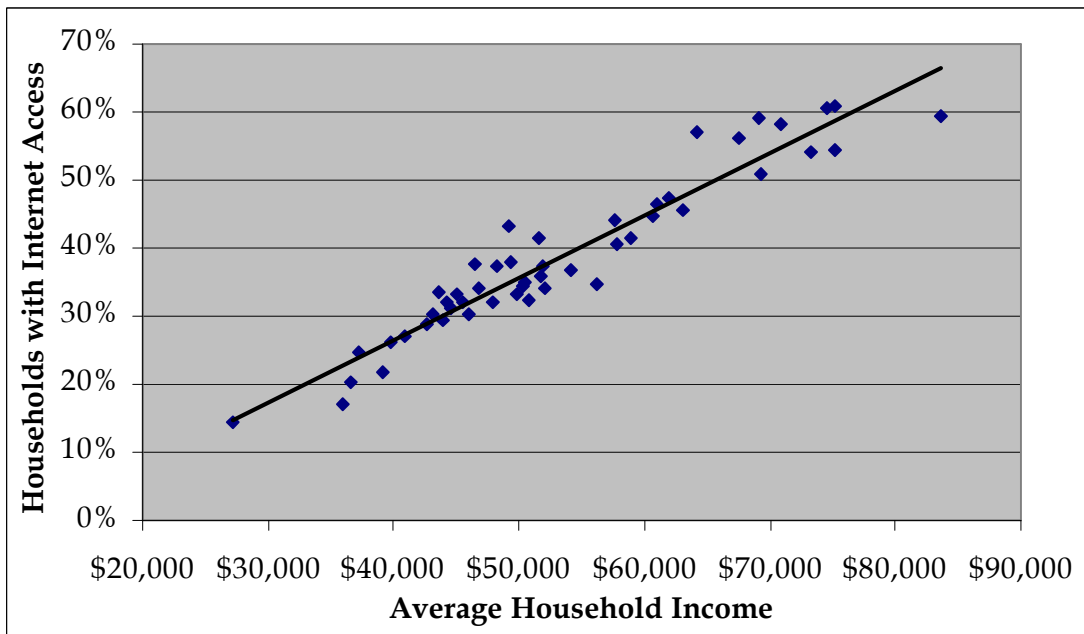
## 4.7 Access to Telecommunication Systems

The Census question relating to telecommunications allowed for multiple responses. There were also some responses that fell within the 'not stated' category. Note that the Census question only asks whether there is access to telecommunication systems from the dwelling, not whether an individual has access.

Hutt City has a higher rate of access to the Internet than New Zealand. Figure 51 shows that there is a strong correlation between access to the Internet and average household income. Taita North and Gracefield have the lowest rate of access to the Internet, while Normandale and Belmont have the highest. It should be noted that people may have Internet access at work but not at home.

The access to a fax machine follows a similar pattern to the access to the Internet, and again appears to be related to household income.

Figure 51: Access to the Internet and Household Income



As Figure 52 shows, Taita North, Moera, and Delaney are the areas the least likely to have access to a telephone. Hutt City when compared against New Zealand has a lower proportion of households that do not have access to a telephone.

Figure 52: Access to Telecommunication Systems (Total Response)

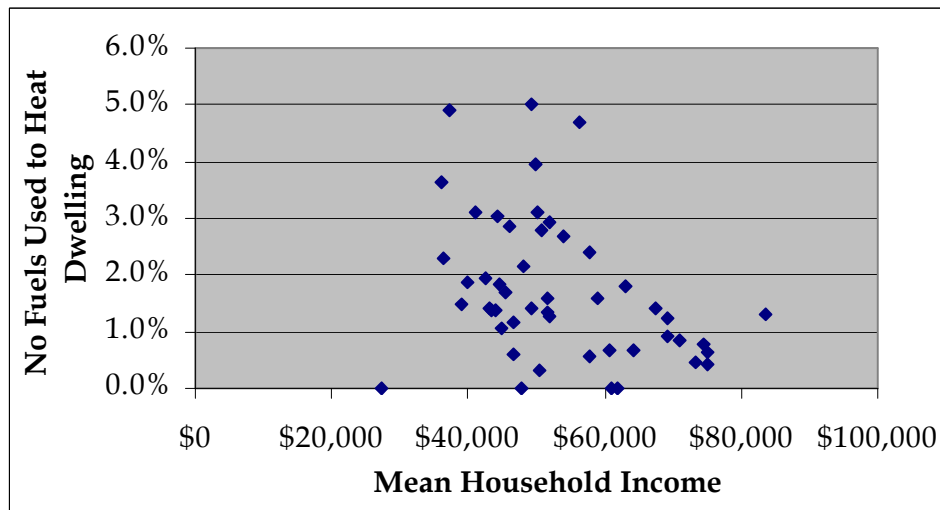
	No Access to Telecommunication Systems	Access to a Telephone	Access to a Fax Machine	Access to the Internet
<b>Lower Hutt City</b>	<b>3.0%</b>	<b>93.9%</b>	<b>19.6%</b>	<b>38.8%</b>
<b>Wainuiomata Ward</b>	<b>2.7%</b>	<b>94.0%</b>	<b>15.0%</b>	<b>33.0%</b>
1. Glendale	3.3%	93.1%	12.6%	29.4%
2. Parkway	1.8%	96.0%	15.7%	37.5%
3. Fernlea	3.2%	94.9%	14.8%	31.9%
4. Arakura	3.6%	94.3%	14.3%	30.4%
5. Homedale West	1.7%	94.8%	14.5%	33.4%
6. Homedale East	2.7%	94.1%	17.2%	34.0%
7. Pencarrow	3.6%	92.7%	36.4%	45.5%
<b>Northern Ward</b>	<b>4.7%</b>	<b>90.7%</b>	<b>16.4%</b>	<b>31.0%</b>
<i>Stokes Valley</i>	<i>3.0%</i>	<i>93.5%</i>	<i>20.3%</i>	<i>37.8%</i>
8. Tawhai	1.4%	96.2%	21.9%	41.5%
9. Holborn	2.2%	96.1%	19.1%	37.4%
10. Delaney	7.9%	85.3%	14.7%	26.0%
11. Manuka	0.5%	96.4%	26.5%	47.4%
12. Taita North	10.4%	82.6%	8.1%	17.1%
13. Taita South	5.2%	89.1%	11.2%	21.8%
<b>Central Ward</b>	<b>1.8%</b>	<b>95.7%</b>	<b>21.9%</b>	<b>41.5%</b>
14. Avalon East	3.1%	93.4%	12.5%	27.2%
15. Avalon West	1.3%	95.4%	18.2%	34.9%
16. Boulcott	1.4%	96.3%	24.4%	44.7%
17. Eponi West	2.3%	94.6%	19.1%	37.5%
18. Waterloo West	1.8%	97.3%	22.7%	50.9%
19. Hutt Central	0.5%	98.6%	30.5%	54.1%
20. Melling	4.2%	87.5%	18.1%	33.3%
21. Alicetown	3.1%	94.5%	18.9%	34.6%
22. Woburn North	0.7%	98.7%	31.3%	59.3%
<b>Eastern Ward</b>	<b>4.1%</b>	<b>93.2%</b>	<b>14.2%</b>	<b>32.1%</b>
23. Naenae North	6.2%	89.9%	9.7%	20.2%
24. Naenae South	5.3%	92.0%	12.3%	28.8%
25. Eponi East	4.3%	93.0%	17.2%	36.0%
26. Waterloo East	1.1%	97.7%	17.8%	44.0%
27. Waiwhetu North	4.1%	92.4%	14.6%	30.4%
<b>Western Ward</b>	<b>0.6%</b>	<b>97.6%</b>	<b>30.6%</b>	<b>58.1%</b>
28. Normandale	0.4%	97.5%	31.0%	60.7%
29. Maungaraki	0.7%	97.1%	26.4%	56.2%
30. Belmont	0.8%	97.4%	36.5%	60.7%
31. Kelson	0.3%	99.0%	29.1%	57.0%
32. Haywards-Manor Park	2.4%	95.1%	24.4%	46.3%
<b>Harbour Ward</b>	<b>3.7%</b>	<b>92.1%</b>	<b>21.4%</b>	<b>40.6%</b>
33. Waiwhetu South	2.4%	93.2%	12.3%	32.1%
34. Gracefield	0.0%	71.4%	0.0%	14.3%
35. Moera	9.9%	83.2%	10.4%	24.8%
36. Woburn South	3.4%	96.6%	15.5%	43.1%
37. Korokoro	0.6%	96.3%	32.7%	59.3%
<i>Petone</i>	<i>5.4%</i>	<i>89.3%</i>	<i>15.8%</i>	<i>34.0%</i>
38. Petone Central	4.6%	89.9%	21.1%	36.7%
39. Esplanade	4.4%	89.3%	16.4%	32.4%
40. Wilford	6.3%	89.2%	14.1%	34.5%
41. Eastbourne	0.8%	97.1%	35.1%	54.4%
Kapiti Coast District	2.0%	95.6%	24.9%	38.0%
Porirua City	4.9%	90.9%	21.6%	39.0%
Upper Hutt	2.3%	95.6%	20.5%	40.6%
Wellington City	1.8%	94.1%	23.7%	50.6%
<b>New Zealand</b>	<b>3.5%</b>	<b>92.3%</b>	<b>24.2%</b>	<b>35.9%</b>

## 4.8 Means of Heating

The means of heating Census question also allowed multiple responses.

The percent of dwellings that do not use any fuels for heating has increased in both Hutt City and New Zealand. Woburn South, Moera and Alicetown had the highest percentages where there are 'no fuels used in this dwelling'. Figure 53 suggests that average household income does not have any correlation with the dwellings where no fuels are used for heating.

Figure 53: No Heating Fuels Used and Household Income



As Figure 54 shows, Hutt City has a much lower proportion of households that use wood for heating than New Zealand. Instead Hutt City has higher proportions that use mains gas and electricity. Mains gas is not available in all areas of New Zealand, which may explain some of Hutt City's deviation from the national proportions.

Pencarrow has an exceptionally high proportion of dwellings that use wood for heating. This is likely to be because this is the only rural area unit in Hutt City. Haywards-Manor Park experienced a large increase in the proportion that uses mains gas.

Figure 54: Fuel Type Used to Heat Private Occupied Dwelling

	Electricity		Mains Gas		Bottled Gas		Wood	
	2001	1996	2001	1996	2001	1996	2001	1996
<b>Lower Hutt City</b>	<b>73.1%</b>	<b>76.0%</b>	<b>38.5%</b>	<b>36.0%</b>	<b>23.1%</b>	<b>20.3%</b>	<b>29.4%</b>	<b>31.7%</b>
<b>Wainuiomata Ward</b>	<b>67.0%</b>	<b>69.6%</b>	<b>37.9%</b>	<b>34.6%</b>	<b>29.3%</b>	<b>28.0%</b>	<b>37.4%</b>	<b>39.0%</b>
1. Glendale	62.6%	64.1%	42.3%	40.8%	29.8%	28.7%	33.6%	34.9%
2. Parkway	64.8%	70.5%	44.3%	42.2%	25.7%	26.5%	30.3%	29.8%
3. Fernlea	70.6%	69.3%	37.2%	34.4%	30.3%	26.6%	38.1%	40.4%
4. Arakura	65.8%	65.5%	41.3%	36.2%	32.0%	28.2%	31.7%	33.1%
5. Homedale West	67.8%	73.3%	41.8%	38.0%	26.7%	25.7%	34.2%	37.0%
6. Homedale East	72.1%	75.4%	27.4%	21.6%	31.5%	32.3%	47.4%	51.5%
7. Pencarrow	64.3%	70.9%	0.0%	0.0%	28.6%	21.8%	85.7%	81.8%
<b>Northern Ward</b>	<b>69.3%</b>	<b>72.4%</b>	<b>28.8%</b>	<b>26.8%</b>	<b>30.0%</b>	<b>25.1%</b>	<b>35.9%</b>	<b>37.8%</b>
<i>Stokes Valley</i>	<i>69.0%</i>	<i>71.5%</i>	<i>37.7%</i>	<i>35.7%</i>	<i>29.9%</i>	<i>25.6%</i>	<i>37.3%</i>	<i>39.0%</i>
8. Tawhai	69.3%	72.3%	45.4%	42.6%	29.9%	25.3%	34.0%	36.0%
9. Holborn	64.5%	66.1%	45.0%	43.6%	29.9%	26.4%	29.9%	30.0%
10. Delaney	69.3%	71.8%	19.1%	18.1%	33.0%	27.8%	44.6%	47.1%
11. Manuka	73.5%	75.9%	39.8%	37.2%	26.0%	22.5%	42.3%	44.5%
12. Taita North	65.3%	71.2%	10.9%	9.4%	27.7%	21.9%	32.7%	35.8%
13. Taita South	73.7%	76.6%	16.8%	13.9%	32.0%	26.1%	34.4%	35.9%
<b>Central Ward</b>	<b>74.5%</b>	<b>78.4%</b>	<b>52.8%</b>	<b>51.9%</b>	<b>16.1%</b>	<b>13.4%</b>	<b>16.9%</b>	<b>19.8%</b>
14. Avalon East	74.9%	81.1%	29.2%	30.7%	23.4%	18.9%	18.2%	20.7%
15. Avalon West	73.9%	79.3%	51.0%	52.2%	14.2%	12.0%	14.8%	15.9%
16. Boulcott	74.1%	77.5%	58.2%	54.7%	15.2%	13.0%	17.2%	20.8%
17. Epunu West	76.2%	81.2%	42.1%	41.5%	20.3%	15.8%	17.9%	21.6%
18. Waterloo West	74.8%	74.3%	72.1%	70.6%	14.4%	10.1%	14.4%	14.7%
19. Hutt Central	76.2%	78.3%	67.7%	64.9%	9.7%	7.9%	17.3%	19.9%
20. Melling	67.1%	76.5%	36.8%	38.2%	14.5%	13.2%	14.5%	14.7%
21. Alicetown	70.3%	74.6%	52.0%	51.5%	20.7%	18.1%	14.8%	16.9%
22. Woburn North	77.1%	76.7%	71.9%	68.7%	10.5%	11.3%	20.9%	28.7%
<b>Eastern Ward</b>	<b>74.6%</b>	<b>77.6%</b>	<b>30.9%</b>	<b>28.7%</b>	<b>24.8%</b>	<b>21.4%</b>	<b>28.5%</b>	<b>31.0%</b>
23. Naenae North	72.9%	77.0%	13.9%	12.5%	31.3%	29.7%	34.7%	36.8%
24. Naenae South	72.5%	75.2%	12.5%	9.4%	32.5%	26.7%	42.4%	46.0%
25. Epunu East	75.3%	79.3%	41.6%	38.7%	19.6%	15.0%	23.9%	26.7%
26. Waterloo East	78.0%	80.2%	52.9%	50.4%	17.1%	14.7%	19.1%	21.1%
27. Waiwhetu North	73.0%	73.5%	35.6%	34.7%	21.8%	18.2%	15.5%	17.1%
<b>Western Ward</b>	<b>77.5%</b>	<b>80.5%</b>	<b>44.5%</b>	<b>41.1%</b>	<b>22.3%</b>	<b>20.6%</b>	<b>34.6%</b>	<b>36.1%</b>
28. Normandale	80.3%	79.7%	42.6%	40.1%	19.7%	19.4%	42.6%	42.2%
29. Maungaraki	78.7%	82.0%	42.4%	39.2%	22.7%	21.9%	28.9%	28.2%
30. Belmont	76.7%	80.5%	44.6%	39.6%	21.8%	20.1%	40.3%	44.8%
31. Kelson	75.2%	79.1%	50.8%	50.5%	23.1%	19.3%	28.4%	29.6%
32. Haywards-Manor Pk	73.2%	80.6%	29.3%	0.0%	31.7%	32.3%	39.0%	54.8%
<b>Harbour Ward</b>	<b>75.5%</b>	<b>77.3%</b>	<b>34.9%</b>	<b>31.5%</b>	<b>18.6%</b>	<b>16.2%</b>	<b>28.1%</b>	<b>31.1%</b>
33. Waiwhetu South	73.3%	74.2%	40.5%	39.3%	20.6%	16.9%	17.9%	20.3%
34. Gracefield	55.6%	50.0%	11.1%	12.5%	33.3%	25.0%	11.1%	12.5%
35. Moera	66.7%	68.0%	29.9%	31.5%	24.0%	19.2%	13.7%	16.3%
36. Woburn South	75.0%	75.4%	33.3%	24.6%	20.0%	19.7%	10.0%	14.8%
37. Korokoro	78.7%	82.0%	31.1%	28.6%	21.3%	19.9%	45.7%	46.6%
<i>Petone</i>	<i>69.6%</i>	<i>70.4%</i>	<i>45.0%</i>	<i>44.9%</i>	<i>19.2%</i>	<i>15.7%</i>	<i>15.7%</i>	<i>17.7%</i>
38. Petone Central	67.9%	71.1%	41.1%	39.5%	21.4%	16.7%	19.6%	23.7%
39. Esplanade	67.2%	68.8%	43.7%	44.5%	21.7%	15.6%	14.6%	15.9%
40. Wilford	71.8%	71.4%	47.0%	46.6%	16.9%	15.5%	15.5%	17.5%
41. Eastbourne	87.4%	90.6%	20.9%	10.9%	14.1%	14.2%	52.9%	57.5%
Kapiti Coast District	72.0%	74.5%	17.0%	12.4%	31.1%	31.3%	42.2%	46.7%
Porirua City	72.3%	73.1%	19.1%	16.6%	30.8%	26.2%	37.1%	38.9%
Upper Hutt	71.7%	73.8%	35.8%	33.0%	24.4%	22.0%	36.9%	39.0%
Wellington City	81.4%	85.1%	31.4%	29.2%	16.1%	13.5%	22.2%	25.9%
<b>New Zealand</b>	<b>68.5%</b>	<b>73.9%</b>	<b>12.8%</b>	<b>11.1%</b>	<b>26.9%</b>	<b>21.3%</b>	<b>42.6%</b>	<b>46.6%</b>

4.8 Means of Heating

Figure 54: Fuel Type Used to Heat Private Occupied Dwelling (continued)

	Coal		Solar Power		Other Fuels		No Fuels Used	
	2001	1996	2001	1996	2001	1996	2001	1996
<b>Lower Hutt City</b>	<b>5.7%</b>	<b>7.7%</b>	<b>0.6%</b>	<b>0.6%</b>	<b>0.8%</b>	<b>0.8%</b>	<b>1.6%</b>	<b>1.2%</b>
<b>Wainuiomata Ward</b>	<b>4.7%</b>	<b>6.7%</b>	<b>0.8%</b>	<b>0.5%</b>	<b>0.5%</b>	<b>0.5%</b>	<b>1.1%</b>	<b>0.7%</b>
1. Glendale	4.4%	7.2%	0.5%	0.5%	0.5%	0.3%	1.4%	0.8%
2. Parkway	3.1%	4.6%	0.6%	0.6%	0.6%	0.3%	0.6%	0.6%
3. Fernlea	4.1%	6.4%	0.9%	0.5%	0.0%	0.5%	0.0%	0.9%
4. Arakura	4.6%	5.2%	1.4%	0.7%	1.4%	0.7%	1.4%	1.0%
5. Homedale West	4.8%	7.2%	0.7%	0.3%	0.7%	0.7%	1.4%	0.7%
6. Homedale East	6.2%	8.7%	0.6%	0.3%	0.0%	0.6%	1.2%	0.6%
7. Pencarrow	8.9%	10.9%	1.8%	1.8%	0.0%	1.8%	1.8%	0.0%
<b>Northern Ward</b>	<b>7.6%</b>	<b>7.9%</b>	<b>0.8%</b>	<b>0.7%</b>	<b>1.0%</b>	<b>0.7%</b>	<b>1.8%</b>	<b>1.3%</b>
<i>Stokes Valley</i>	<i>5.6%</i>	<i>6.2%</i>	<i>0.7%</i>	<i>0.6%</i>	<i>0.8%</i>	<i>0.7%</i>	<i>1.4%</i>	<i>0.7%</i>
8. Tawhai	3.5%	4.1%	0.5%	0.3%	0.5%	0.5%	1.4%	0.5%
9. Holborn	5.2%	5.3%	0.9%	0.9%	0.9%	0.9%	2.2%	0.4%
10. Delaney	8.2%	8.1%	1.1%	0.8%	1.1%	0.8%	1.9%	1.2%
11. Manuka	6.6%	8.9%	0.0%	0.5%	1.0%	0.5%	0.0%	0.5%
12. Taita North	11.2%	9.4%	1.7%	1.0%	1.3%	0.7%	3.6%	3.1%
13. Taita South	10.5%	11.9%	0.6%	0.9%	1.2%	0.6%	1.5%	1.5%
<b>Central Ward</b>	<b>4.6%</b>	<b>7.0%</b>	<b>0.5%</b>	<b>0.4%</b>	<b>0.6%</b>	<b>0.6%</b>	<b>1.6%</b>	<b>0.9%</b>
14. Avalon East	4.5%	7.1%	1.0%	0.7%	0.3%	0.4%	3.1%	1.4%
15. Avalon West	2.9%	4.7%	0.6%	0.4%	0.3%	0.4%	0.3%	0.4%
16. Boulcott	4.4%	7.5%	0.3%	0.7%	0.3%	0.3%	0.7%	1.0%
17. Epuni West	5.1%	7.9%	0.5%	0.3%	0.8%	0.5%	1.3%	0.8%
18. Waterloo West	3.6%	6.4%	0.0%	1.8%	0.0%	0.0%	0.9%	0.0%
19. Hutt Central	6.2%	8.1%	0.2%	0.0%	1.2%	1.2%	0.5%	0.2%
20. Melling	5.3%	4.4%	0.0%	0.0%	1.3%	0.0%	3.9%	2.9%
21. Alicetown	3.1%	3.8%	0.8%	0.4%	0.8%	0.4%	4.7%	2.3%
22. Woburn North	5.9%	11.3%	0.7%	0.0%	0.7%	1.3%	1.3%	0.0%
<b>Eastern Ward</b>	<b>6.9%</b>	<b>9.5%</b>	<b>0.6%</b>	<b>0.5%</b>	<b>0.7%</b>	<b>0.7%</b>	<b>1.7%</b>	<b>1.4%</b>
23. Naenae North	8.2%	10.9%	0.8%	0.8%	1.1%	0.4%	2.3%	2.2%
24. Naenae South	10.8%	14.0%	0.7%	0.2%	0.7%	1.2%	1.9%	1.4%
25. Epuni East	5.8%	8.2%	0.3%	0.5%	0.8%	0.8%	1.6%	1.1%
26. Waterloo East	4.5%	6.8%	0.8%	0.4%	0.6%	0.6%	0.6%	0.6%
27. Waiwhetu North	3.4%	5.3%	0.6%	0.6%	0.0%	0.6%	2.9%	1.8%
<b>Western Ward</b>	<b>3.9%</b>	<b>6.0%</b>	<b>0.9%</b>	<b>0.6%</b>	<b>0.9%</b>	<b>0.7%</b>	<b>0.9%</b>	<b>0.6%</b>
28. Normandale	4.5%	6.8%	0.8%	0.8%	0.8%	1.3%	0.4%	0.0%
29. Maungaraki	2.8%	4.6%	0.5%	0.2%	0.9%	0.7%	1.4%	0.7%
30. Belmont	4.9%	7.8%	1.5%	0.8%	1.0%	0.6%	0.8%	0.8%
31. Kelson	3.6%	5.0%	0.7%	0.7%	1.0%	0.3%	0.7%	0.3%
32. Haywards-Manor Park	2.4%	6.5%	0.0%	0.0%	0.0%	3.2%	0.0%	3.2%
<b>Harbour Ward</b>	<b>6.1%</b>	<b>8.8%</b>	<b>0.7%</b>	<b>0.8%</b>	<b>0.8%</b>	<b>1.1%</b>	<b>2.4%</b>	<b>2.1%</b>
33. Waiwhetu South	3.4%	5.8%	0.3%	0.7%	0.7%	1.0%	3.0%	2.4%
34. Gracefield	11.1%	0.0%	0.0%	0.0%	0.0%	0.0%	0.0%	12.5%
35. Moera	4.4%	5.9%	1.0%	1.0%	0.5%	2.0%	4.9%	3.0%
36. Woburn South	0.0%	3.3%	0.0%	0.0%	0.0%	0.0%	5.0%	3.3%
37. Korokoro	4.9%	6.2%	0.6%	0.6%	1.2%	0.6%	1.2%	0.6%
<i>Petone</i>	<i>4.4%</i>	<i>5.7%</i>	<i>0.5%</i>	<i>0.7%</i>	<i>0.8%</i>	<i>0.8%</i>	<i>2.9%</i>	<i>3.1%</i>
38. Petone Central	5.4%	7.9%	0.9%	0.0%	0.9%	0.9%	2.7%	4.4%
39. Esplanade	4.0%	5.3%	0.6%	0.6%	0.9%	0.9%	2.8%	3.4%
40. Wilford	4.4%	5.5%	0.2%	0.9%	0.7%	0.7%	3.1%	2.5%
41. Eastbourne	11.3%	16.8%	1.1%	1.0%	1.0%	1.6%	0.6%	0.3%
Kapiti Coast District	4.2%	6.7%	1.0%	0.9%	0.7%	0.7%	1.1%	0.9%
Porirua City	6.8%	8.8%	1.1%	0.8%	1.0%	1.0%	2.8%	1.9%
Upper Hutt	3.9%	5.3%	0.7%	0.5%	0.9%	1.1%	1.4%	1.0%
Wellington City	5.0%	7.3%	0.6%	0.5%	0.7%	0.7%	2.4%	1.3%
<b>New Zealand</b>	<b>8.9%</b>	<b>12.4%</b>	<b>0.9%</b>	<b>0.7%</b>	<b>1.0%</b>	<b>0.9%</b>	<b>2.6%</b>	<b>1.8%</b>