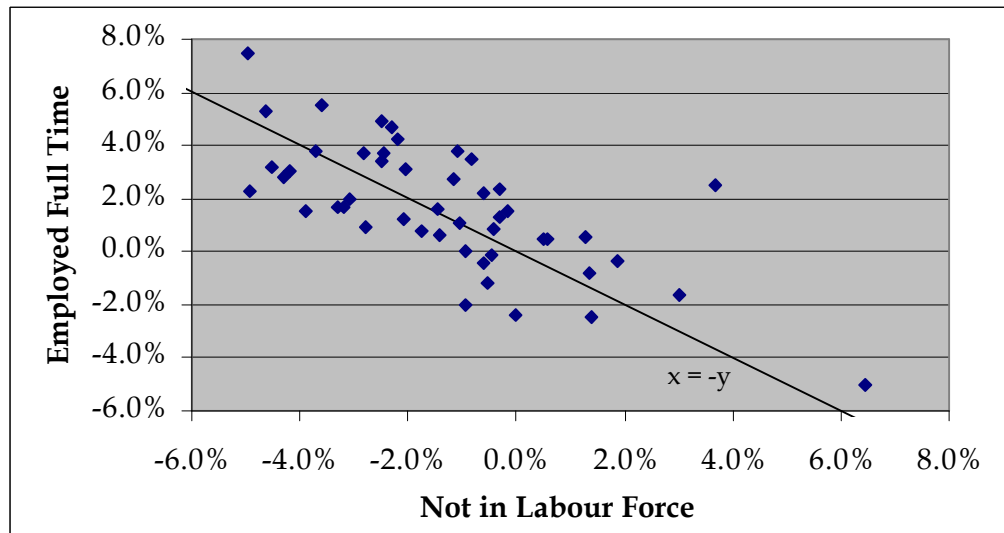


5. Employment

5.1 Labour Force Status

For both Hutt City and New Zealand, the percentage of people in fulltime employment increased between 1996 and 2001, while the percentage not in the labour force decreased. Figure 55 shows that the decrease of those not in the labour force is almost proportional to the increase of those in fulltime employment. The line labelled 'x = -y' represents a proportional change between the two categories. Normandale is the major exception to this, with the 'employed fulltime' and 'not in the labour force' categories both increased by 2.5% and 3.7% respectively.

Figure 55: Change in Labour Force Status



Petone Central and the area units on the Western Hills all have a high percentage in full time employment. Kelson has a low percentage in the 'not in the labour force' category, while Avalon and Naenae North have a high representation in that category.

The unemployment rate has remained constant in Hutt City between 1996 and 2001, shown in Figure 57. However, there was some variation in the individual area units. Figure 56 shows that is a correlation between unemployment and the percent that have no qualification.

Figure 56: No Qualification and Unemployed

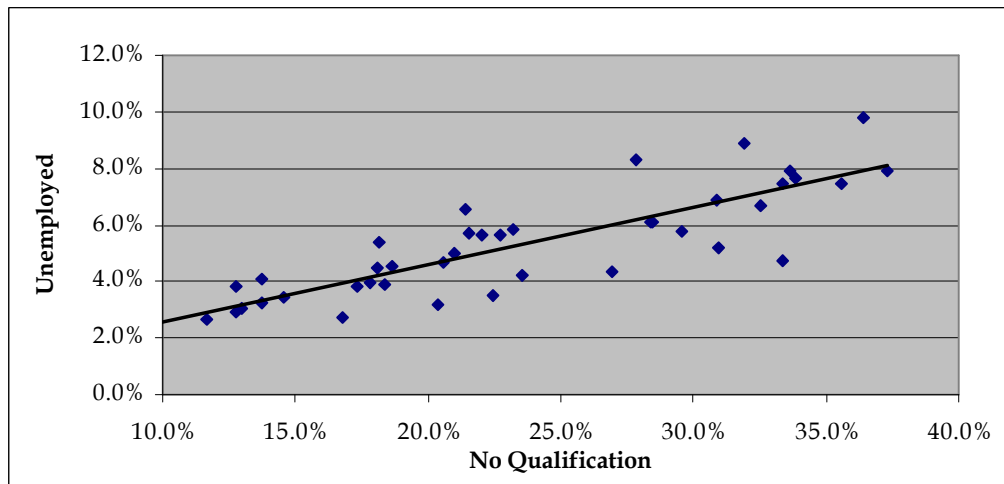


Figure 57: Labour Force Status

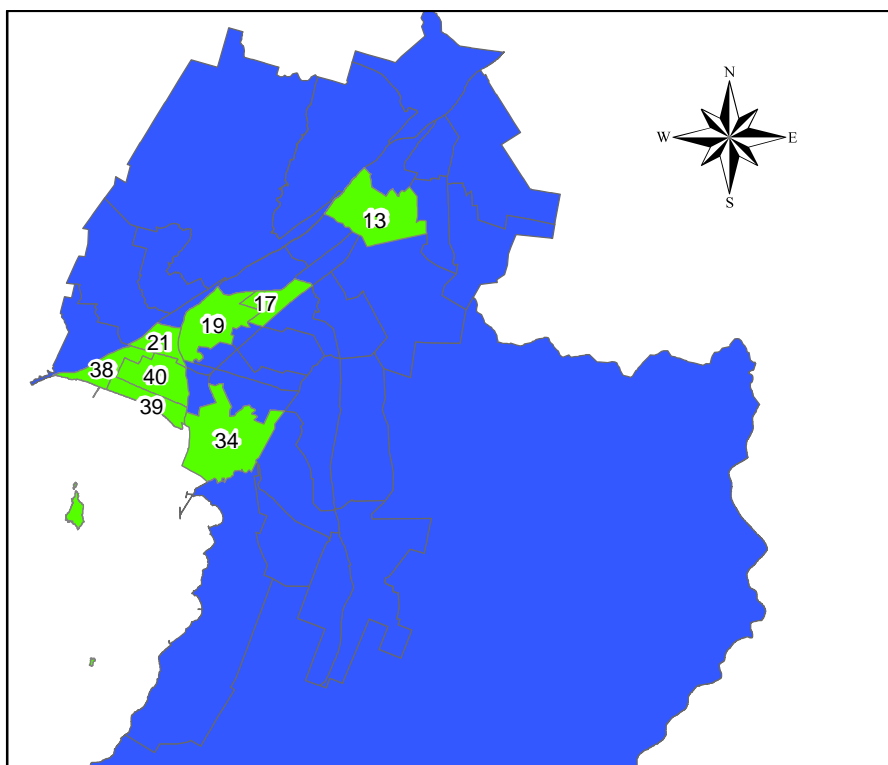
	2001				1996			
	Employed Full-time	Employed Part-time	Un-employed	Not in the Labour Force	Employed Full-time	Employed Part-time	Un-employed	Not in the Labour Force
Lower Hutt City	49.3%	13.4%	5.3%	30.2%	47.7%	12.8%	5.3%	31.7%
Wainuiomata Ward	48.4%	13.5%	6.8%	30.0%	48.8%	12.3%	6.0%	30.6%
1. Glendale	48.1%	13.2%	7.9%	29.4%	49.3%	11.3%	7.8%	30.0%
2. Parkway	50.7%	13.7%	6.1%	29.0%	51.5%	13.9%	5.1%	27.7%
3. Fernlea	49.0%	14.8%	6.7%	29.1%	45.9%	14.3%	4.8%	31.2%
4. Arakura	47.5%	12.8%	7.6%	31.1%	49.5%	9.8%	5.9%	32.0%
5. Homedale West	46.2%	11.9%	6.9%	32.9%	44.6%	11.0%	5.3%	36.7%
6. Homedale East	46.8%	14.6%	5.8%	30.5%	49.3%	13.3%	6.3%	29.1%
7. Pencarrow	60.2%	13.6%	4.2%	20.3%	55.5%	15.6%	3.9%	22.7%
Northern Ward	46.9%	12.6%	6.7%	31.2%	44.2%	12.0%	6.7%	32.4%
<i>Stokes Valley</i>	<i>50.8%</i>	<i>13.6%</i>	<i>5.6%</i>	<i>28.1%</i>	<i>49.3%</i>	<i>13.3%</i>	<i>5.4%</i>	<i>28.3%</i>
8. Tawhai	53.7%	13.9%	4.3%	26.3%	51.5%	14.0%	4.2%	26.9%
9. Holborn	53.7%	12.0%	6.1%	26.8%	53.1%	13.0%	6.0%	25.5%
10. Delaney	39.9%	13.4%	8.9%	35.1%	40.2%	11.9%	8.2%	33.3%
11. Manuka	56.0%	15.0%	3.2%	24.0%	52.2%	14.0%	3.5%	27.7%
12. Taita North	39.4%	10.0%	9.8%	37.0%	33.9%	8.9%	9.5%	40.6%
13. Taita South	41.7%	11.9%	7.5%	35.7%	37.4%	10.9%	8.2%	37.9%
Central Ward	47.3%	13.8%	4.0%	33.9%	45.7%	13.4%	3.8%	35.3%
14. Avalon East	39.9%	13.5%	5.2%	40.6%	38.2%	11.9%	5.3%	43.9%
15. Avalon West	40.9%	13.2%	3.5%	41.5%	42.5%	13.2%	3.6%	38.5%
16. Boulcott	46.9%	12.9%	3.9%	35.6%	43.4%	13.8%	3.2%	36.4%
17. Epuni West	48.0%	13.4%	5.0%	32.4%	45.0%	12.9%	4.4%	36.6%
18. Waterloo West	53.2%	14.2%	3.4%	28.3%	50.9%	13.7%	3.8%	28.6%
19. Hutt Central	45.1%	14.9%	2.7%	36.6%	45.2%	14.2%	2.3%	37.1%
20. Melling	57.4%	12.8%	5.7%	20.6%	56.1%	14.4%	5.8%	20.9%
21. Alicetown	59.1%	12.9%	4.6%	22.0%	55.9%	10.7%	5.1%	26.5%
22. Woburn North	51.9%	16.6%	3.9%	26.7%	48.2%	17.3%	2.4%	29.2%
Eastern Ward	45.6%	12.6%	6.0%	34.3%	41.9%	11.8%	6.4%	37.1%
23. Naenae North	38.7%	11.0%	7.5%	40.2%	35.9%	8.8%	8.4%	44.5%
24. Naenae South	43.8%	12.3%	7.9%	34.2%	40.1%	11.5%	7.2%	35.3%
25. Epuni East	48.3%	13.0%	4.6%	32.8%	43.4%	13.5%	5.9%	35.3%
26. Waterloo East	51.3%	14.1%	3.9%	30.3%	47.9%	14.4%	3.8%	32.8%
27. Waiwhetu North	48.5%	13.4%	5.8%	31.4%	43.2%	10.1%	7.8%	36.0%
Western Ward	60.0%	15.4%	3.0%	20.3%	59.6%	14.8%	3.2%	19.8%
28. Normandale	61.7%	15.2%	2.6%	19.2%	59.2%	15.3%	3.2%	15.5%
29. Maungaraki	60.4%	12.9%	3.1%	21.6%	59.9%	13.6%	3.9%	21.0%
30. Belmont	58.5%	17.5%	2.9%	20.1%	58.5%	16.5%	2.4%	21.0%
31. Kelson	62.4%	16.8%	3.2%	17.3%	61.6%	14.0%	3.3%	19.0%
32. Haywards-Manor Pk	47.1%	12.5%	3.8%	34.6%	52.1%	14.1%	4.2%	28.2%
Harbour Ward	50.1%	13.1%	5.0%	28.9%	48.8%	12.7%	5.2%	31.0%
33. Waiwhetu South	47.3%	12.2%	5.6%	32.5%	46.4%	11.7%	5.5%	35.2%
34. Gracefield	47.6%	9.5%	4.8%	28.6%	50.0%	7.1%	14.3%	28.6%
35. Moera	43.4%	12.0%	8.3%	31.5%	42.6%	10.9%	10.7%	31.9%
36. Woburn South	45.9%	13.5%	5.4%	33.3%	52.1%	11.8%	5.9%	29.4%
37. Korokoro	58.9%	13.7%	4.1%	20.4%	57.2%	14.5%	2.9%	23.6%
<i>Petone</i>	<i>51.5%</i>	<i>11.4%</i>	<i>5.9%</i>	<i>27.8%</i>	<i>49.5%</i>	<i>10.8%</i>	<i>6.1%</i>	<i>30.9%</i>
38. Petone Central	62.6%	9.0%	4.5%	21.2%	55.1%	9.8%	5.7%	26.1%
39. Esplanade	49.8%	11.0%	6.6%	28.4%	47.5%	10.5%	5.8%	33.4%
40. Wilford	50.0%	12.3%	5.7%	29.0%	49.4%	11.4%	6.4%	30.4%
41. Eastbourne	49.5%	16.2%	2.4%	30.1%	48.4%	16.0%	2.5%	31.2%
Kapiti Coast District	38.1%	13.8%	4.0%	42.1%	36.3%	13.3%	4.0%	43.5%
Porirua City	47.3%	13.2%	6.9%	29.9%	43.3%	12.1%	6.9%	31.0%
Upper Hutt	48.5%	13.6%	4.4%	32.1%	47.2%	13.7%	5.1%	32.6%
Wellington City	54.2%	13.6%	4.5%	24.5%	53.0%	13.9%	4.5%	25.7%
New Zealand	46.0%	13.8%	4.8%	32.3%	45.0%	13.6%	4.9%	33.5%

5.2 Place of Work

As Figure 62 shows, there are 35,508 people that work within Hutt City. The main centres of employment within Hutt City are described below and shown in Figure 58.

- **Hutt Central** (19). The Central Business District (CBD) is completely within this area unit. Therefore much of the employment within this area is related to retail, offices, and the accompanying services.
- **Petone**. Includes the area units of Petone Central (38), Esplanade (39), and Wilford (40). Petone has a wide range of industrial, trade, and business activities that includes factories as well as smaller businesses and workshops. The Te Puni Mail Centre, Weltec (formerly Hutt Valley Polytechnic), and computer and telecommunications companies are located in Petone. There is also a large amount of retailing along Jackson Street and in Annie Huggan Grove, along with a growing restaurant and café culture in Jackson Street.
- **Gracefield** (34). Includes the Crown Research Institute (former DSIR), Woburn Railway Workshops, Oil Company Storage Tanks, freight, storage and transport industries, and a range of factories and wholesale trade.
- **Epuni West** (17). Has a high number of people employed within the Health and Community Services associated with Hutt Hospital.
- **Taita South** (13). There are a number of industrial, business, and warehouse activities situated along Peterkin Street and the Eastern Hutt Road between the Wingate and Taita railway stations.
- **Alicetown** (21). Has a number of small business operations along with industrial operations along Hutt Road, Wakefield Street, Victoria Street and Cuba Street.

Figure 58: Main Centres of Employment



5.2 Place of Work

In Figures 59 - 61, the rows represent where people live and the columns represent where people work. The area described as Wairarapa only includes the areas governed by the Masterton District Council, Carterton District Council, and South Wairarapa District Council.

Figure 59: Usual Residence and Place of Work Matrix

Usual Residence	Workplace Area								Total Usual Residence
	Kapiti Coast District	Porirua City	Upper Hutt City	Lower Hutt City	Wgtn City	Wairarapa	Wgtn Region nfd	Other	
Kapiti Coast District	9,516	759	168	714	3,246	27	372	2,607	17,412
Porirua City	273	7,365	273	1,470	7,776	36	678	2,757	20,625
Upper Hutt City	27	294	7,467	3,570	3,576	60	429	1,893	17,316
Lower Hutt City	102	546	1,518	24,021	12,618	81	1,266	5,331	45,489
Wellington City	303	2,286	576	4,980	70,710	219	2,523	8,910	90,513
Wairarapa	12	33	192	336	759	13,671	246	2,229	17,469
Remainder New Zealand	540	228	120	414	1,860	342	231		
Total Workplace Area	10,770	11,514	10,320	35,508	100,539	14,430	5,745		

The matrix in Figure 59 shows where people work compared to where they live. The total usual residence column shows the number of people for each territorial authority that are gainfully employed (includes both full time and part time workers).

Figure 60: Percent of Workplace Area by Usual Residence

Usual Residence	Workplace Area					
	Kapiti Coast District	Porirua City	Upper Hutt City	Lower Hutt City	Wellington City	Wairarapa
Kapiti Coast District	88.4%	6.6%	1.6%	2.0%	3.2%	0.2%
Porirua City	2.5%	64.0%	2.6%	4.1%	7.7%	0.2%
Upper Hutt City	0.3%	2.6%	72.4%	10.1%	3.6%	0.4%
Lower Hutt City	0.9%	4.7%	14.7%	67.6%	12.6%	0.6%
Wellington City	2.8%	19.9%	5.6%	14.0%	70.3%	1.5%
Wairarapa	0.1%	0.3%	1.9%	0.9%	0.8%	94.7%
Remainder New Zealand	5.0%	2.0%	1.2%	1.2%	1.9%	2.4%

Figure 60 is based on the percentage of people who work within each Territorial Authority. For instance 14.7% of the people who work in Upper Hutt live in Hutt City.

Figure 61: Percent of Usual Residence by Workplace Area

Usual Residence	Workplace Area							
	Kapiti Coast District	Porirua City	Upper Hutt City	Lower Hutt City	Wellington City	Wairarapa	Wellington Region nfd	Other
Kapiti Coast District	54.7%	4.4%	1.0%	4.1%	18.6%	0.2%	2.1%	15.0%
Porirua City	1.3%	35.7%	1.3%	7.1%	37.7%	0.2%	3.3%	13.4%
Upper Hutt City	0.2%	1.7%	43.1%	20.6%	20.7%	0.3%	2.5%	10.9%
Lower Hutt City	0.2%	1.2%	3.3%	52.8%	27.7%	0.2%	2.8%	11.7%
Wellington City	0.3%	2.5%	0.6%	5.5%	78.1%	0.2%	2.8%	9.8%
Wairarapa	0.1%	0.2%	1.1%	1.9%	4.3%	78.3%	1.4%	12.8%

Figure 61 is based on the percentage of people who live within each Territorial Authority. For instance 27.7% of the people that are gainfully employed and live in Hutt City work in Wellington City.

The column labelled "Total Workplace Population" in Figure 62 shows the amount of people that work within each area. The other columns in the table show the territorial authority where the workers live for each workplace area. For instance of the 35,508 people that work in Hutt City, 4,980 live in Wellington City.

Figure 62: Place of Work

Workplace Area	Total Workplace Population	Usual Residence						
		Kapiti Coast	Porirua City	Upper Hutt City	Lower Hutt City	Wellington City	Wairarapa	Remainder of NZ
Lower Hutt City	35,508	714	1,470	3,570	24,021	4,980	336	414
Wainuiomata Ward	1692	15	27	39	1518	84	6	9
1. Glendale	156	3	3	3	141	9	0	3
2. Parkway	747	6	9	18	666	42	3	3
3. Fernlea	183	3	0	9	168	3	3	0
4. Arakura	87	0	3	0	81	3	0	0
5. Homedale West	168	3	3	3	150	12	0	0
6. Homedale East	273	0	6	6	246	12	0	0
7. Pencarrow	78	0	3	0	66	3	0	3
Northern Ward	2508	39	75	333	1722	297	21	18
<i>Stokes Valley</i>	<i>870</i>	<i>6</i>	<i>9</i>	<i>90</i>	<i>729</i>	<i>24</i>	<i>3</i>	<i>6</i>
8. Tawhai	252	0	3	21	222	6	0	0
9. Holborn	387	3	3	54	306	12	0	3
10. Delaney	87	3	0	9	75	0	0	0
11. Manuka	144	0	3	6	126	6	3	3
12. Taita North	516	9	15	63	336	81	6	3
13. Taita South	1,122	24	51	180	657	192	12	9
Central Ward	12843	270	528	1422	8433	1929	126	135
14. Avalon East	525	3	12	57	405	45	0	3
15. Avalon West	318	9	12	27	198	60	6	6
16. Boulcott	480	12	9	39	354	54	6	3
17. Epuni West	1,527	27	60	204	954	261	12	12
18. Waterloo West	171	3	3	15	129	18	0	3
19. Hutt Central	7,797	162	327	840	5,127	1,182	87	69
20. Melling	735	21	42	96	408	153	3	12
21. Alicetown	1,107	30	57	129	714	141	12	24
22. Woburn North	183	3	6	15	144	15	0	3
Eastern Ward	2709	48	75	258	1995	276	24	30
23. Naenae North	585	6	9	51	474	36	0	9
24. Naenae South	867	12	30	126	597	84	6	9
25. Epuni East	261	3	6	18	207	21	0	3
26. Waterloo East	768	21	27	57	519	123	18	6
27. Waiwhetu North	228	6	3	6	198	12	0	3
Western Ward	1263	15	51	108	972	102	3	18
28. Normandale	177	0	12	6	144	12	0	3
29. Maungaraki	273	0	9	9	231	24	0	0
30. Belmont	405	6	9	21	330	36	3	9
31. Kelson	261	9	3	33	198	18	0	0
32. Haywards-Manor Pk	147	0	18	39	69	12	0	6
Harbour Ward	13005	315	660	1269	8385	2076	132	168
33. Waiwhetu South	654	6	15	48	516	57	9	9
34. Gracefield	3,714	96	183	387	2,379	579	30	54
35. Moera	363	3	12	48	255	27	9	6
36. Woburn South	12	0	0	0	12	3	0	0
37. Korokoro	459	12	36	39	288	75	3	9
<i>Petone</i>	<i>7110</i>	<i>198</i>	<i>408</i>	<i>732</i>	<i>4305</i>	<i>1302</i>	<i>81</i>	<i>87</i>
38. Petone Central	4,704	144	297	483	2,730	948	51	54
39. Esplanade	1,365	33	69	150	882	195	24	18
40. Wilford	1,041	21	42	99	693	159	6	15
41. Eastbourne	693	0	6	15	630	33	0	3

5.3 Industry

There are two different population counts carried out in the Census with regard to employment. Both populations are limited to people aged 15 years and over and those people gainfully employed (both full and part time). In Figure 63 the sectors of industry have been ranked according to which employs the largest number of Hutt City residents (usually resident population).

Figure 63: Industry

Industry	2001 Workplace Population	2001 Usually Resident Population	1996 Usually Resident Population	Change in Usually Resident Population
Property and Business Services	4,758	6,870	5,829	1,041
Manufacturing	5,838	5,388	6,363	-975
Retail Trade	4,731	5,388	5,274	114
Health and Community Services	3,138	3,288	2,604	684
Construction	2,460	3,186	2,760	426
Education	3,135	3,069	2,733	336
Government Administration and Defence	1,290	3,000	2,805	195
Wholesale Trade	2,820	2,895	3,135	-240
Finance and Insurance	873	2,253	2,562	-309
Personal and other Services	1,410	2,067	2,028	39
Transport and Storage	1,281	1,890	1,734	156
Accommodation, Cafes and Restaurants	1,005	1,572	1,326	246
Communication Services	1,029	1,119	1,164	-45
Cultural and Recreational Services	981	1,116	1,038	78
Agriculture, Forestry and Fishing	105	219	201	18
Electricity, Gas and Water Supply	135	174	255	-81
Mining	33	21	33	-12
Not Elsewhere Included	489	1,983	2,358	-375
Total	35,511	45,486	44,202	1,284

There were 45,486 Hutt City residents gainfully employed in 2001. This represents an increase of 1,284 from 1996. In that time there was a large increase in the number of residents that are employed within the 'property and business services' sector. The 'property and business services' sector is now employs the largest number of Hutt City residents. Other sectors that experienced significant growth include the health and community services, construction, and education.

The manufacturing industry had the largest decrease in the number of Hutt City residents that it employs. However, Manufacturing is still the second largest employer and the largest employer of people who work in Hutt City. Other sectors that faced significant decreases were the 'wholesale trade' and 'finance and insurance' sectors. The 'finance and insurance' decrease is likely to be a reflection of the bank branch closures that occurred between 1996 and 2001.

5.4 Occupation

Figure 64 has been ranked to show which occupations employ the largest number of Hutt City residents.

Figure 64: Occupation

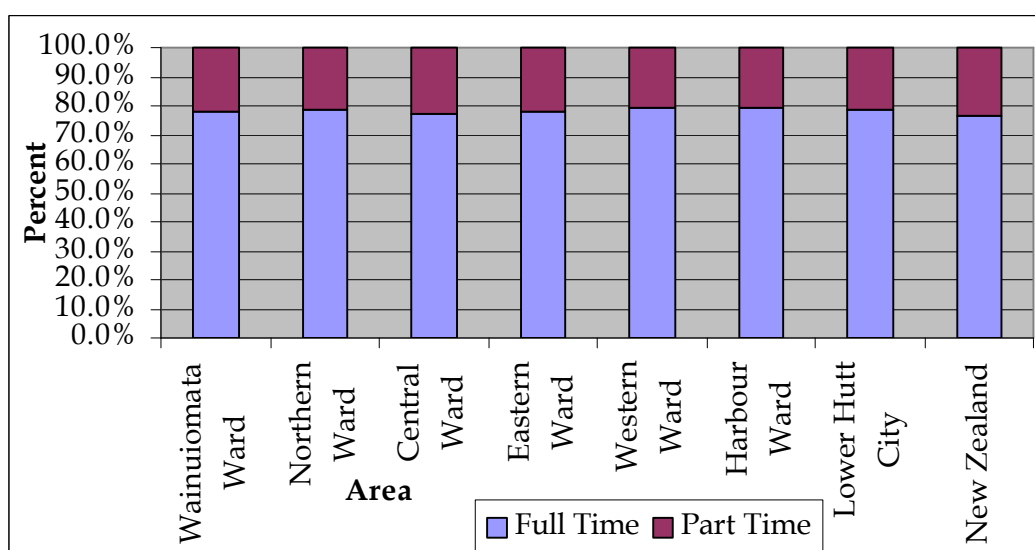
Occupation	2001 Workplace Population	2001 Usually Resident Population	1996 Usually Resident Population	Change in Usually Resident Population
Clerks	5,730	7,878	8,148	-270
Professionals	5,781	7,026	5,826	1,200
Service and Sales Workers	4,602	6,024	5,709	315
Legislators, Administrators and Managers	5,193	6,012	5,823	189
Technicians and Associate Professionals	4,593	5,658	5,727	-69
Elementary Occupations (incl Residuals)	3,180	5,058	5,103	-45
Trades Workers	3,468	4,119	4,335	-216
Plant and Machine Operators and Assemblers	2,589	3,165	3,078	87
Agriculture and Fishery Workers	372	546	447	99
Total	35,508	45,489	44,199	1,290

There was a large increase in the number of Hutt City residents that are 'professionals' between 1996 and 2001. This category remains the second highest to 'clerks' for the occupation of Hutt City residents. 'Service and Sales Workers' and 'Legislators, Administrators and Managers' both increased significantly. 'Clerks' and 'Trade Workers' decreased significantly between 1996 and 2001.

5.5 Hours Worked

The hours worked information includes the total hours worked in all jobs. Figure 66 shows that most people gainfully employed work a 40-49 hour week. In Hutt City 21.4% of people in gainfully employed are in part time work. This is just below the New Zealand Figure of 23.1%. There is very little difference in the proportion employed in full and part time work between the different wards, as shown in Figure 65.

Figure 65: Employment Type



5.5 Hours Worked

Figure 66: Hours Worked

	Under 10 Hours Worked	10-19 Hours Worked	20-29 Hours Worked	Part Time Not Elsewhere Included	Total Employed Part Time
Lower Hutt City	5.3%	6.9%	7.6%	1.7%	21.4%
Wainuiomata Ward	5.4%	6.5%	7.7%	2.0%	21.7%
1. Glendale	4.9%	7.0%	7.2%	2.2%	21.3%
2. Parkway	5.5%	6.6%	7.7%	1.5%	21.3%
3. Fernlea	5.4%	7.3%	8.3%	2.2%	23.2%
4. Arakura	6.0%	6.3%	6.5%	2.4%	21.2%
5. Homedale West	5.3%	4.7%	8.0%	1.9%	19.9%
6. Homedale East	5.9%	7.0%	9.0%	2.0%	23.9%
7. Pencarrow	4.4%	6.7%	6.7%	2.2%	20.0%
Northern Ward	5.6%	6.0%	7.7%	2.0%	21.3%
<i>Stokes Valley</i>	5.5%	6.1%	8.2%	1.6%	21.3%
8. Tawhai	5.5%	6.4%	8.0%	0.8%	20.6%
9. Holborn	5.5%	4.3%	7.3%	1.5%	18.6%
10. Delaney	6.5%	7.1%	8.8%	3.1%	25.5%
11. Manuka	4.4%	6.3%	8.9%	1.6%	21.3%
12. Taita North	5.8%	4.8%	6.4%	3.3%	20.3%
13. Taita South	5.8%	6.6%	7.1%	2.7%	22.3%
Central Ward	5.2%	7.5%	8.3%	1.6%	22.6%
14. Avalon East	6.5%	7.5%	7.8%	3.3%	25.1%
15. Avalon West	4.4%	7.6%	9.9%	2.0%	24.0%
16. Boulcott	5.1%	6.2%	8.6%	1.9%	21.7%
17. Epuni West	5.2%	7.5%	7.1%	1.9%	21.8%
18. Waterloo West	5.2%	8.4%	6.5%	0.6%	20.6%
19. Hutt Central	5.3%	9.1%	9.3%	1.2%	25.0%
20. Melling	6.0%	6.0%	6.0%	1.0%	19.0%
21. Alicetown	4.3%	5.4%	7.2%	0.9%	17.8%
22. Woburn North	5.2%	9.1%	9.5%	0.4%	24.2%
Eastern Ward	5.2%	7.1%	7.3%	2.2%	21.8%
23. Naenae North	6.5%	6.3%	6.6%	3.0%	22.3%
24. Naenae South	5.0%	7.4%	7.0%	2.4%	21.8%
25. Epuni East	4.3%	7.8%	7.6%	1.7%	21.4%
26. Waterloo East	5.2%	7.2%	7.7%	1.6%	21.6%
27. Waiwhetu North	4.7%	7.0%	7.5%	2.8%	22.0%
Western Ward	4.6%	7.6%	7.3%	0.9%	20.5%
28. Normandale	4.7%	6.6%	7.6%	1.0%	19.9%
29. Maungaraki	3.6%	7.2%	6.1%	0.9%	17.8%
30. Belmont	5.4%	8.6%	8.4%	0.6%	23.0%
31. Kelson	5.0%	7.6%	7.4%	1.2%	21.2%
32. Haywards-Manor Park	4.8%	9.5%	6.3%	1.6%	22.2%
Harbour Ward	5.7%	6.3%	7.4%	1.3%	20.8%
33. Waiwhetu South	5.9%	5.6%	7.4%	1.5%	20.5%
34. Gracefield	9.1%	0.0%	0.0%	0.0%	9.1%
35. Moera	5.2%	6.5%	7.4%	2.6%	21.7%
36. Woburn South	7.6%	6.1%	9.1%	1.5%	24.2%
37. Korokoro	4.0%	6.0%	7.6%	1.2%	18.9%
<i>Petone</i>	5.0%	5.7%	6.3%	1.2%	18.2%
38. Petone Central	3.1%	4.4%	4.4%	1.3%	13.2%
39. Esplanade	5.5%	5.3%	6.0%	1.0%	17.8%
40. Wilford	5.1%	6.3%	7.0%	1.4%	19.8%
41. Eastbourne	7.1%	7.7%	8.7%	1.1%	24.7%
Kapiti Coast District	6.7%	8.8%	9.2%	1.8%	26.5%
Porirua City	5.1%	7.3%	7.5%	2.1%	21.9%
Upper Hutt	5.6%	7.4%	7.5%	1.4%	21.9%
Wellington City	5.0%	6.9%	7.0%	1.2%	20.0%
New Zealand	5.7%	7.6%	7.9%	2.0%	23.1%

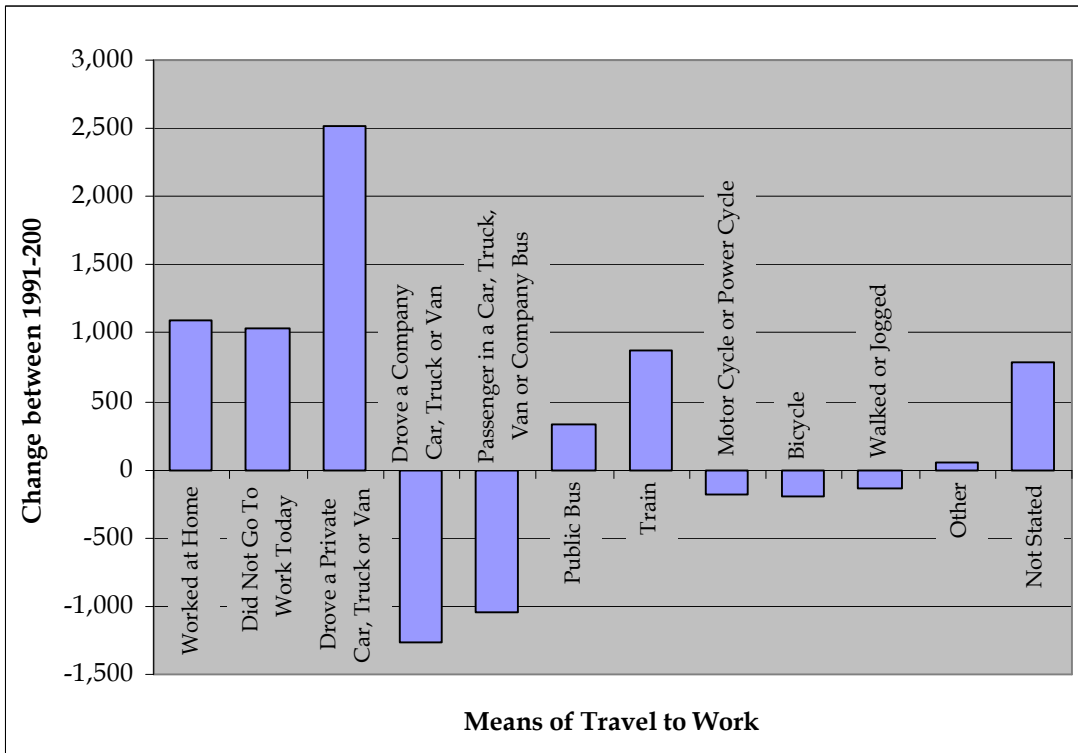
Figure 66: Hours Worked (continued)

	30-39 Hours Worked	40-49 Hours Worked	50-59 Hours Worked	60-69 Hours Worked	Over 70 Hours Worked	Full-time Not Elsewhere Included	Total Employed Full Time
Lower Hutt City	12.9%	43.2%	11.2%	4.5%	3.1%	3.7%	78.6%
Wainuiomata Ward	12.4%	46.1%	9.1%	3.9%	2.7%	4.1%	78.3%
1. Glendale	12.1%	46.2%	9.8%	3.3%	2.5%	4.7%	78.7%
2. Parkway	12.3%	48.8%	9.5%	2.6%	1.8%	3.7%	78.7%
3. Fernlea	14.0%	43.8%	7.9%	4.1%	2.9%	4.1%	76.8%
4. Arakura	10.9%	49.2%	8.4%	3.5%	2.2%	4.6%	78.8%
5. Homedale West	13.6%	45.7%	8.0%	5.0%	3.3%	4.4%	80.1%
6. Homedale East	11.8%	44.6%	9.8%	3.9%	2.6%	3.3%	76.1%
7. Pencarrow	13.3%	36.7%	11.1%	8.9%	6.7%	3.3%	80.0%
Northern Ward	12.7%	45.1%	9.8%	3.8%	2.7%	4.6%	78.7%
<i>Stokes Valley</i>	<i>12.8%</i>	<i>44.0%</i>	<i>11.2%</i>	<i>4.1%</i>	<i>2.9%</i>	<i>3.6%</i>	<i>78.7%</i>
8. Tawhai	13.1%	44.9%	11.4%	4.4%	3.2%	2.5%	79.4%
9. Holborn	14.0%	46.0%	11.0%	3.7%	2.7%	4.0%	81.4%
10. Delaney	10.9%	42.2%	8.8%	3.4%	2.0%	7.1%	74.5%
11. Manuka	13.0%	42.2%	13.3%	4.8%	3.5%	1.9%	78.7%
12. Taita North	11.5%	48.5%	5.8%	3.0%	1.8%	9.1%	79.7%
13. Taita South	13.2%	46.2%	8.0%	3.6%	2.5%	4.4%	77.7%
Central Ward	12.5%	40.4%	12.5%	4.9%	3.8%	3.3%	77.4%
14. Avalon East	11.4%	42.7%	9.8%	2.6%	3.3%	5.2%	74.9%
15. Avalon West	11.7%	42.4%	12.0%	3.5%	3.5%	2.9%	76.0%
16. Boulcott	11.8%	42.4%	12.9%	4.8%	2.9%	3.5%	78.3%
17. Epuni West	14.0%	41.1%	11.3%	4.6%	3.8%	3.4%	78.2%
18. Waterloo West	13.5%	43.9%	12.9%	3.9%	2.6%	2.6%	79.4%
19. Hutt Central	11.7%	34.7%	14.3%	7.1%	4.1%	3.1%	75.0%
20. Melling	12.0%	39.0%	13.0%	5.0%	8.0%	4.0%	81.0%
21. Alicetown	12.9%	46.4%	12.6%	3.4%	3.7%	3.2%	82.2%
22. Woburn North	13.4%	33.8%	13.9%	8.2%	4.3%	2.2%	75.8%
Eastern Ward	13.0%	44.3%	9.6%	4.0%	2.9%	4.4%	78.2%
23. Naenae North	13.1%	45.4%	7.2%	3.1%	2.8%	6.1%	77.7%
24. Naenae South	11.2%	45.5%	8.6%	3.8%	3.4%	5.8%	78.2%
25. Epuni East	13.6%	45.0%	9.7%	3.9%	2.8%	3.5%	78.6%
26. Waterloo East	14.0%	41.9%	12.0%	4.7%	2.6%	3.1%	78.4%
27. Waiwhetu North	12.6%	44.4%	9.8%	4.2%	3.7%	3.3%	78.0%
Western Ward	13.9%	43.1%	12.7%	4.7%	2.7%	2.4%	79.5%
28. Normandale	15.2%	41.0%	14.3%	4.9%	2.7%	2.0%	80.1%
29. Maungaraki	14.6%	46.6%	12.8%	3.9%	1.9%	2.4%	82.2%
30. Belmont	13.0%	39.8%	12.7%	5.7%	3.7%	2.1%	77.0%
31. Kelson	13.2%	43.7%	11.8%	4.1%	2.7%	3.3%	78.8%
32. Haywards-Manor Park	11.1%	47.6%	9.5%	6.3%	1.6%	1.6%	77.8%
Harbour Ward	13.0%	40.9%	13.0%	5.5%	3.5%	3.5%	79.2%
33. Waiwhetu South	13.6%	44.5%	10.1%	4.7%	2.7%	3.9%	79.5%
34. Gracefield	18.2%	54.5%	9.1%	0.0%	0.0%	9.1%	90.9%
35. Moera	13.0%	45.7%	6.1%	3.0%	3.5%	7.0%	78.3%
36. Woburn South	12.1%	43.9%	12.1%	1.5%	3.0%	3.0%	75.8%
37. Korokoro	15.7%	38.6%	16.5%	6.4%	2.0%	2.0%	81.1%
<i>Petone</i>	<i>12.5%</i>	<i>44.9%</i>	<i>12.0%</i>	<i>4.8%</i>	<i>3.6%</i>	<i>4.1%</i>	<i>81.8%</i>
38. Petone Central	11.9%	49.1%	13.8%	5.0%	3.1%	3.8%	86.8%
39. Esplanade	13.3%	44.1%	12.3%	5.3%	3.8%	3.5%	82.2%
40. Wilford	12.1%	44.3%	11.2%	4.4%	3.7%	4.6%	80.2%
41. Eastbourne	12.5%	32.6%	16.7%	7.5%	4.1%	1.9%	75.3%
Kapiti Coast District	13.0%	36.0%	11.6%	5.9%	3.9%	3.1%	73.5%
Porirua City	12.6%	42.7%	10.6%	4.7%	3.0%	4.7%	78.1%
Upper Hutt	13.1%	43.3%	10.7%	4.5%	3.3%	3.2%	78.1%
Wellington City	13.4%	41.3%	13.7%	5.4%	3.2%	3.0%	80.0%
New Zealand	11.2%	38.0%	12.3%	6.2%	5.0%	4.2%	76.9%

5.6 Main Means of Travel to Work on Census Day

The main method (based on distance travelled) used to travel to work on Census day is recorded for people gainfully employed. This also gives some indication of the people that worked at home on Census day.

Figure 67: Change in Main Method of Travel to Work between 1991-2001



There has been a significant increase in the number of people who drove to work on Census day, this is shown in both Figures 67 and 68. Figure 68 shows that the number of people who worked at home on Census day doubled between 1991-2001. There was also an increase of over a 1000 people that did not work on Census day. (Census day was the first Tuesday in March for each Census.) Both public bus and train patronage has increased over that period. The major decline occurred in the number of people who travelled to work in a company vehicle.

Figure 68: Main Method of Travel to Work on Census Day

	2001	1996	1991	Change 1991-2001
Worked at Home	2,142	1,830	1,047	1,095
Did Not Go To Work Today	4,875	4,254	3,837	1,038
Drove a Private Car, Truck or Van	20,484	19,881	17,964	2,520
Drove a Company Car, Truck or Van	4,662	5,265	5,922	-1,260
Passenger in a Car, Truck, Van or Company Bus	2,559	3,003	3,609	-1,050
Public Bus	2,010	1,593	1,683	327
Train	4,119	3,543	3,246	873
Motor Cycle or Power Cycle	288	309	468	-180
Bicycle	789	858	984	-195
Walked or Jogged	1,779	1,962	1,923	-144
Other	369	486	315	54
Not Stated	1,413	1,221	633	780
Total	45,486	44,202	41,631	3,855