

# Welcome

## TO HUTT CITY COUNCIL'S LONG TERM COUNCIL COMMUNITY PLAN 2006-2017 INCORPORATING THE 2007-2008 ANNUAL PLAN

Long Term Council Community Plan 2006-2017 is a cumbersome term, so from now on we will call this the Community Plan.

### WHAT IS A COMMUNITY PLAN?

As the name suggests, a Community Plan is a document put together by the community and Council that sets the strategic direction for the city over the next 10 years. The diagram on this page shows the major components of the Community Plan and highlights the links between Community Outcomes, Council's strategies and the three-year work plan together with a partnership approach to achieving the Community Outcomes.

The Outcomes identified by the community indicate how the city should grow socially, culturally, economically and environmentally. The end result is an all-encompassing document that outlines the community's expectations and shows how Council, with the help of the community and other organisations, will work together to achieve these.

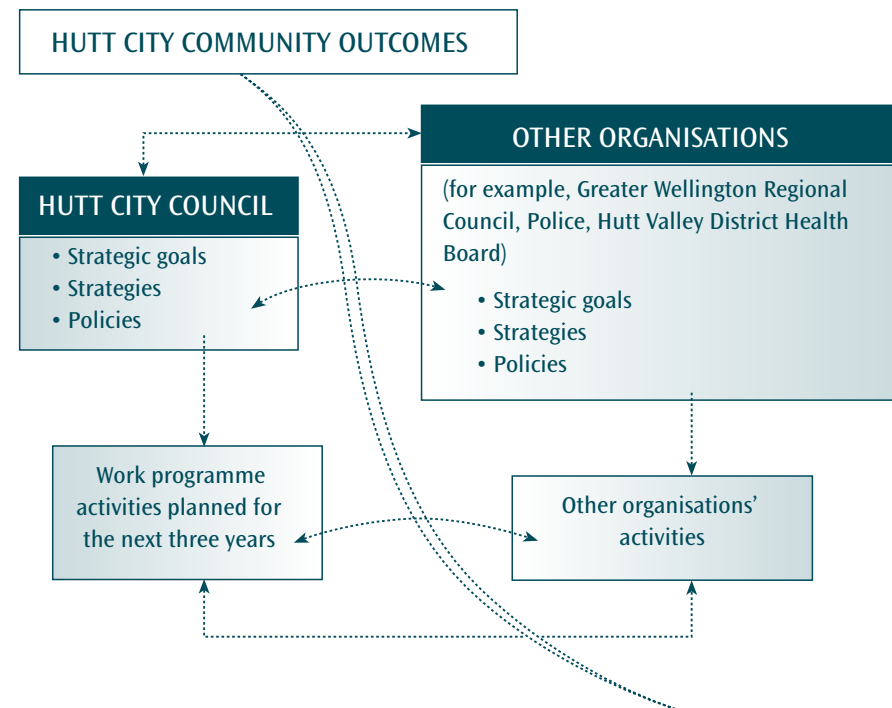
Under the Local Government Act 2002, Hutt City Council is required to produce, once every three years, a Community Plan covering the next 10 years. The first Community Plan was produced in 2003. However, Hutt Council will prepare a Community Plan every year that will provide an update on how the city is progressing and include any changes that may occur along the way.

The Community Plan must be reviewed and evaluated once every three years, and the Community Outcomes contained within the document reviewed and evaluated once every six years to ensure that Council is on track. A summary document outlining progress will be distributed annually to residents, as part of the planning process.

### THE DOCUMENT YOU ARE READING IS THE COMMUNITY PLAN

The Community Plan sets out the direction the city will take over the next 10 years.

It is important to understand that the Community Plan is not something made up by Council. It reflects what Hutt City residents and ratepayers have told Council about what they want for the city now and in the future. To find out more about how Council gathered input for the Draft Community Plan see page 13.



## FROM THE MAYOR



Welcome to Hutt City Council's Long-term Council Community Plan. This Plan looks at the activities and services the Council undertakes on behalf of the city and our spending priorities for the next ten years.

The Council is committed to making our city the best little city in New Zealand to live and work – or, as the billboard says, “The place where you can have your Pavlova and eat it too”.

This Community Plan shows we are well on track.

The Council has worked hard to get the city's finances in order. Hutt City has bucked the national

trend of big rate rises and kept rate increases for the last three years below inflation through sensible and prudent long-term planning.

This year's average rates rise is just 1.3%, which, in real terms, is a rates reduction of 1.3% when inflation is accounted for. This is a remarkable achievement.

The Community Plan shows rate rises under inflation will continue in 2007 and for every year after that to 2017.

The city's debt is also forecast to reduce significantly over the next 10 years, allowing the Council the flexibility to invest on big ticket infrastructure items in future years.

The Council's commitment to increased infrastructure investment is underlined by the millions more being invested on improving the city's flood protection, stormwater drainage network and roads.

The city's economy continues to perform well. For the year ending March 2006 GDP grew by 4.4%, twice the national rate; jobs grew by 3.6%; the number of businesses increased 2.5%; productivity increased 0.8%, compared to a 1.3% decrease the previous year.

These figures reaffirm the growing strength of our economy, and our ongoing economic strategies. For it to continue, we must remain focused.

Putting the finances in order is vital to the social and cultural wellbeing of the city, and allows Council to provide the myriad of other services ratepayers expect and deserve from us, such as keeping the city safe and free from graffiti, maintaining and improving community facilities such as parks, playgrounds and libraries, and providing opportunities for our young people.

I was delighted with the public response to the draft Community Plan, with the Council receiving 1,179 submissions. This was slightly up from last year, and among the most received by any Council in the country.

The public feedback from submissions and from those who attended the Council's ground-breaking Consultation Plus Workshop in February has resulted in a number of new projects being included in the Community Plan, for example:

- \$1.6m for upgrading public toilets.
- \$1.2m for McKenzie Pool replacement and \$1m for learn to swim pool at Huia Pool.
- \$600,000 for trunk main outfall sewer leak investigations.
- More than \$100,000 per year to implement Walking and Cycling Strategy and Cycleway Network Development.
- Free weekend parking in Lower Hutt.
- \$1.1m for CBD/Eastern Ring Route and \$1.5m for CBD Masterplan.
- \$1.5m for Waiwhetu Stream clean-up.

- \$15.2m for administration building earthquake strengthening and \$1.22m to repair and upgrade community halls.
- \$5m for Melling Bridge upgrade, \$30,000 for Wainuiomata Hill Road footpath/cycleway, \$270,000 to strengthen Cuba Street overbridge, and \$250,000 for upgrading substandard roads in the Western Hills.
- \$1.6m for Walter Nash Stadium upgrade, \$250,000 for Wainuiomata Mountain Bike Facility, \$215,000 for Eastern Bays Walkway, \$120,000 for Naenae Park Pavilion upgrade, \$30,000 for new Manor Park playground, and \$70,000 for Days Bay beach wall.
- \$300,000 for Wingate development.
- \$100,000 per year for Community Board support and for those parts of the city without one.
- \$500,000 for Korohiwa heritage redevelopment.

I want to thank everyone involved during the Community Plan process: residents for their feedback, Council officers for their hard work and diligence, and not least, my Council colleagues for their wise deliberations.

Together we have produced a first-class Community Plan that shows our city in great heart, with a positive future.



**David Ogden**  
**Mayor**  
**Hutt City Council**

## FROM THE CHIEF EXECUTIVE



I have great pleasure in introducing this Community Plan on behalf of Council staff. Having only recently been appointed Chief Executive, much of the credit for this Plan goes to my predecessor, Rik Hart, and recently, Dave Kelly. I also thank the Council staff who worked towards bringing the Community Plan together over the past eight months, and the Community for their input throughout the process.

The Community's participation has been extensive:

- A successful Consultation Plus community workshop was held in February;
- A summary of the Draft Community Plan and questionnaire was distributed to every household in Hutt City and 1,179 responses were received;
- Phone surveys were conducted to gauge community views; and
- An EXPO was held in April to demonstrate Council projects and services.

The number of written responses to the Draft Community Plan was up by 17%, on what was already a high response rate from the previous year. This indicates people are interested in what their Council is doing and want to influence the outcome of the decision making process.

The Council carefully considered the feedback received and incorporated the results in the final Community Plan adopted in June. In fact, Council has made an unprecedented number of changes to the Plan in response to the Community's input. The list of projects mentioned by the Mayor on the preceding pages give some examples.

In addition, there are a few areas of the Plan that I will comment specifically on.

Major progress is being made in relation to flood protection. Substantial investment is occurring to reduce risk from Black Creek Wainuiomata, the Hutt River, Awamutu Stream, Waiwhetu Stream and other localised flood prone areas. Council is working in partnership

with the Greater Wellington Regional Council and departments and agencies of central government.

The coming year will see a significant attention to such issues as heritage and urban design. These matters are increasingly being raised by the community and this is perhaps a consequence of the amount of development now occurring in the City. Council has a number of initiatives in these areas including preparing vision documents for areas of the city under greatest pressure for change (Petone, Seaview/Gracefield and the CBD). These vision documents will lead to discussions on Council's District Plan and some changes may result.

I congratulate the Mayor and Councillors for adopting a financial strategy some three years ago and following that strategy with each subsequent Community Plan. While specific targets in this strategy will continue to attract debate, and rightly so, clearly outlining the Council's approach to financial management has many benefits. In particular, keeping the average rates increase to just 1.3% this year is an excellent result.

This Community Plan incorporates an ambitious programme for the next ten years; a programme that will help us move towards the City's vision of being a great place to live, work and play. By working as a team together with the community and our partners we can ensure its success.

**Tony Stallinger**  
Chief Executive  
Hutt City Council