

Welcome

TO HUTT CITY COUNCIL'S LONG TERM COUNCIL COMMUNITY PLAN 2006-2016.

Long Term Council Community Plan 2006-2016 is a cumbersome term, so from now on we will call this the Community Plan.

WHAT IS A COMMUNITY PLAN?

As the name suggests, a Community Plan is a document put together by the community and Council that sets the strategic direction for the city over the next 10 years. The diagram on this page shows the major components of the Community Plan and highlights the links between Community Outcomes, Council's strategies and the three-year work plan together with a partnership approach to achieving the Community Outcomes.

The Outcomes identified by the community indicate how the city should grow socially, culturally, economically and environmentally. The end result is an all-encompassing document that outlines the community's expectations and shows how Council, with the help of the community and other organisations, will work together to achieve these.

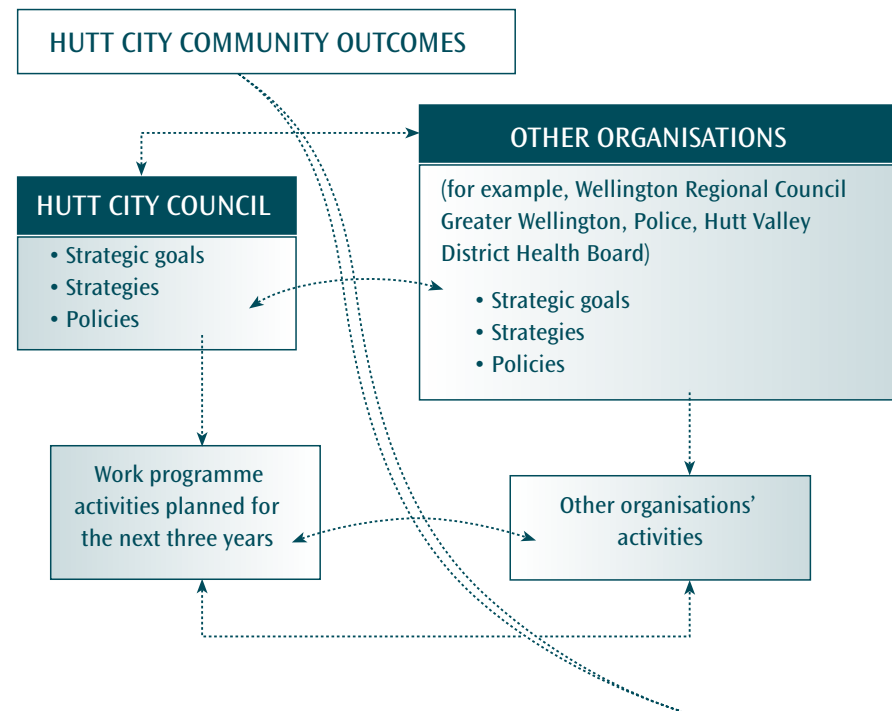
Under the Local Government Act 2002, Hutt City Council is required to produce, once every three years, a Community Plan covering the next 10 years. The first Community Plan was produced in 2003. However, Hutt Council will prepare a Community Plan every year that will provide an update on how the city is progressing and include any changes that may occur along the way.

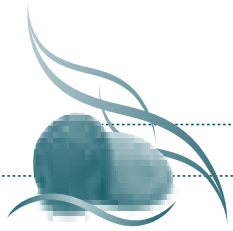
The Community Plan must be reviewed and evaluated once every three years, and the Community Outcomes contained within the document reviewed and evaluated once every six years to ensure that Council is on track. A summary document outlining progress will be distributed annually to residents, as part of the planning process.

THE DOCUMENT YOU ARE READING IS THE COMMUNITY PLAN

The Community Plan sets out the direction the city will take over the next 10 years.

It is important to understand that the Community Plan is not something made up by Council. It reflects what Hutt City residents and ratepayers have told Council about what they want for the city now and in the future. To find out more about how Council gathered input for the Draft Community Plan see page 12.





WHAT IS INCLUDED IN THIS COMMUNITY PLAN?

KEY MESSAGES FROM THE COMMUNITY PLAN

Hutt City Council produces a Community Plan each year, unlike other councils which generally produce one every three years. This means that each year we consult with the community about our ten-year programme.

The key messages from the Community Plan for the period 2006-2016 are:

- This is a 'business as usual' ten-year plan except for provision of \$25 million for major future infrastructure, as discussed below
- Average rates increase will be kept below the rate of inflation and there will be a significant reduction in debt over this period
- The increased spend in the stormwater activity that was established in the 2005-2015 Community Plan remains
- The only other major projects added since the 2005-2015 Community Plan are Hutt Park Development and construction of a Health and Fitness suite at Naenae pool.

INFRASTRUCTURE PROVISION

Council has provisionally earmarked \$25 million to cover a number of future roading and drainage development projects which are seen as desirable, but for which at this stage we cannot predict likely construction timing or budget. While provisions have been included in 2014/15 for stormwater and 2015/16 for roading there can be no commitment on any specific projects. These works are intended to be funded in part by debt and part by revenue from property sales but in outline projects could include:

Roading

An eastern ring road to reduce congestion within the Central Business District, investigation and other works for a link road from Gracefield to Grenada including investigation/design/concept and construction of a Valley Floor Connector and subsequent upgrade of The Esplanade, designed to limit heavy traffic and promote the amenity value of the foreshore.



**Drainage**

Major flood protection works will be required for the Awamutu Stream and for the Waiwhetu Stream in conjunction with the Wellington Regional Council. Once existing work on Black Creek, Wainuiomata is complete an assessment will be undertaken to determine the efficacy of further upgrades on that project.

Other information included

Pursuant to clause 3 of schedule 10 of the Local Government Act 2002, this Community Plan includes the Summaries of the Hutt City Council 2005 Water and Sanitary Services Assessments on pages 141 to 160.

The Wellington Regional Growth Strategy is a discussion document that has a high level set of Community Outcomes for the Wellington region. Hutt City consulted with the community in November 2005 and again as part of the Draft Community Plan consultation to find out what these Regional Outcomes mean for Hutt City. The alignment of the Hutt City Outcomes to the Wellington Regional Outcomes is included in the Community Plan on page 12 onwards.

The Land Transport Management Act provides for local authorities to use Long Term Council Community Plan to consult on their Land Transport Programme as substitutes to separately preparing and consulting on the programme. Hutt City's Land Transport Programme is being consulted on in accordance with schedule 2 of the Land Transport Management Act 2003; the programme is listed on pages 90 and 91.

Council is required by the Local Government Act 2002 to provide a statement of intended levels of service provision for its groups of activities. The performance measures have been reviewed and some changes have been made. See from page 65 onwards under each Activity.

Pursuant to clause 6 of schedule 10 of the Local Government Act 2002, Council must include funding and financial policies of the local authority. The Development Contribution Policy has been reviewed and amended.

Pursuant to clause 6 of schedule 10 of the Local Government Act 2002, Council is required to have a Revenue and Financing Policy. A review of this policy has been undertaken and amendments made.

Pursuant to clause 3 (1) (b) schedule 10 of the Local Government Act 2002, this Community Plan includes the Summary of the 2004 Waste Management Plan refer to pages 161 and 162.