

# NLTP 24-27 Briefing

16<sup>th</sup> August 2023

---

**Jon Kingsbury**

# Briefing purpose

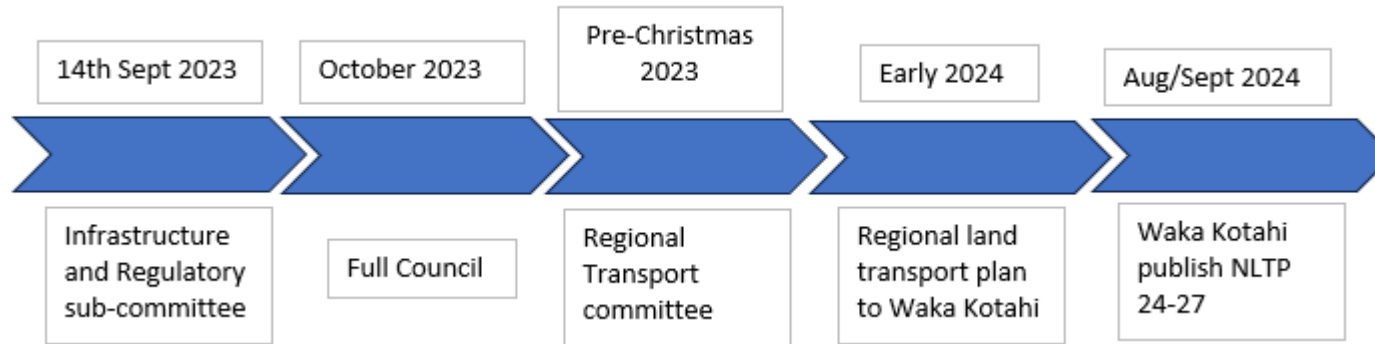
- Set out approach, key decisions and dates for NLTP 24–27
- Provide overview of proposed NLTP 24–27 business case projects and approach for Low Cost/ Low Risk projects
- Seek feedback to inform recommendation list to Infrastructure & Regulatory sub-committee on 14<sup>th</sup> Sept.



# Approach, key decisions and dates for NLTP 24-27

---

## Approach, key decisions and dates for NLTP 24-27 – (TBC)



- Neither NLTP 24-27 process or Govt Policy Statement (GPS) not yet published
- Working assumption for timing and key steps;
  - HCC Infrastructure and Regulatory sub-committee (14<sup>th</sup> Sept) to recommend submission list
  - Full Council (October 2023)
  - Submission list to Regional Transport Committee (RTC) (Pre-Christmas)
  - RTC provide Regional Land Transport Plan to Waka Kotahi in early 2024  
(Projects may be deselected at this point and not be considered by Waka Kotahi)
  - Waka Kotahi publish NLTP 24-27 August/Sept 2024

# Proposed NLTP 24–27 business case projects

---

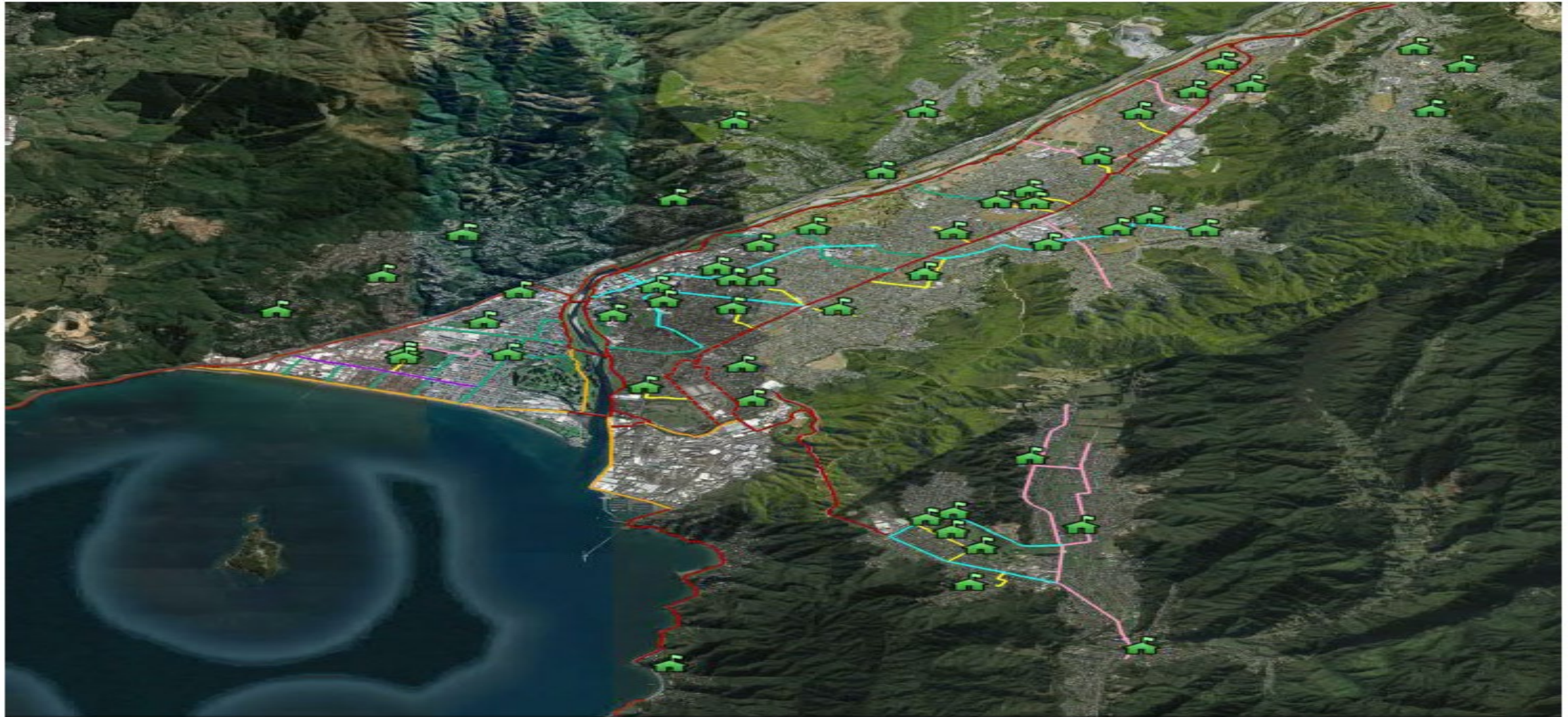
# Cross Valley Connections –



# Cross Valley Connections – Timings

Stage	CAPX	Activities / Items	FY21/22	FY22/23	FY23/24	FY24/25	FY25/26	FY26/27	FY27/28	FY28/29	FY29/30	FY30/31	FY31/32	FY32/33	
<b>NLTP Cycle</b>															
<b>Cross Valley Connection</b>															
<b>Stage 1</b>	<b>\$65.5M</b>	<b>Active and PT Improvements</b>													
1.1	\$35M	Esplanade Active Mode													
1.2	\$11M	Hutt & Ewen Bridge Active Mode													
1.3	\$11M	Woburn - Melling connection													
1.4	\$3.5M	PT Improvements													
1.5	\$5M	Train Station Accessibility													
<b>Stage 2</b>	<b>\$15+M</b>	<b>Gracefield Interchange</b>													
<b>Stage 3</b>	<b>\$114+M</b>	<b>Cross Valley Link Road</b>													

## Hutt City Cycling and Micromobility SSBC - 2021

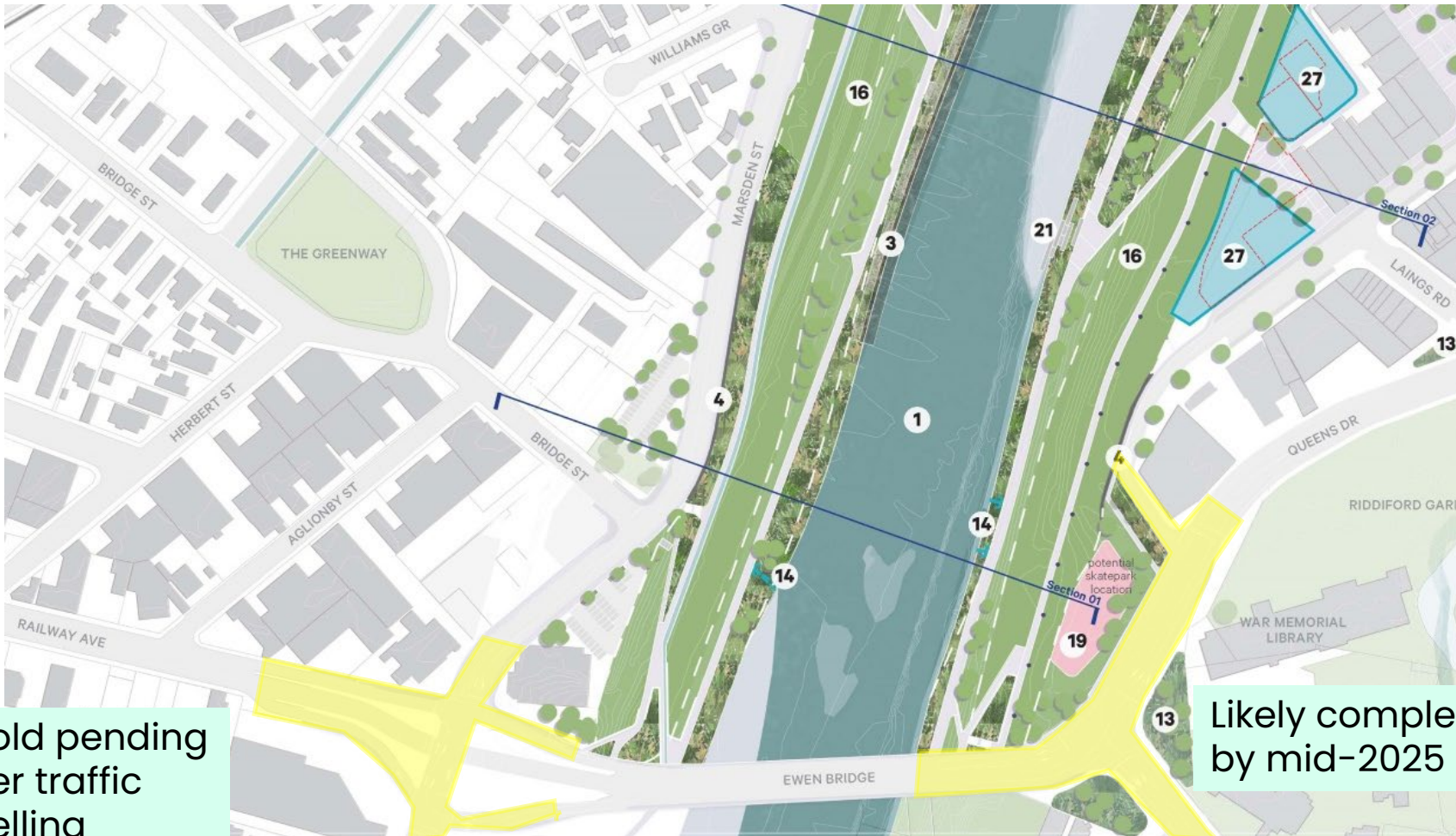


- |  |   |   |   |
|--|---|---|---|
|  Neighbourhood greenway             |  Cycleway or shared path |  Existing and proposed cycleways |  Cycleway or shared street |
|  Cycleway, shared path or bike lane |  Shared path             |  Off road cycleway               |  School                    |



# Te Awa Kairangi (RiverLink)

– Intersection upgrades (1) identified in 2021 NLTP



On hold pending further traffic modelling

Likely complete by mid-2025

# Te Awa Kairangi (RiverLink)

– Intersection upgrades (2) identified in 2021 NLTP



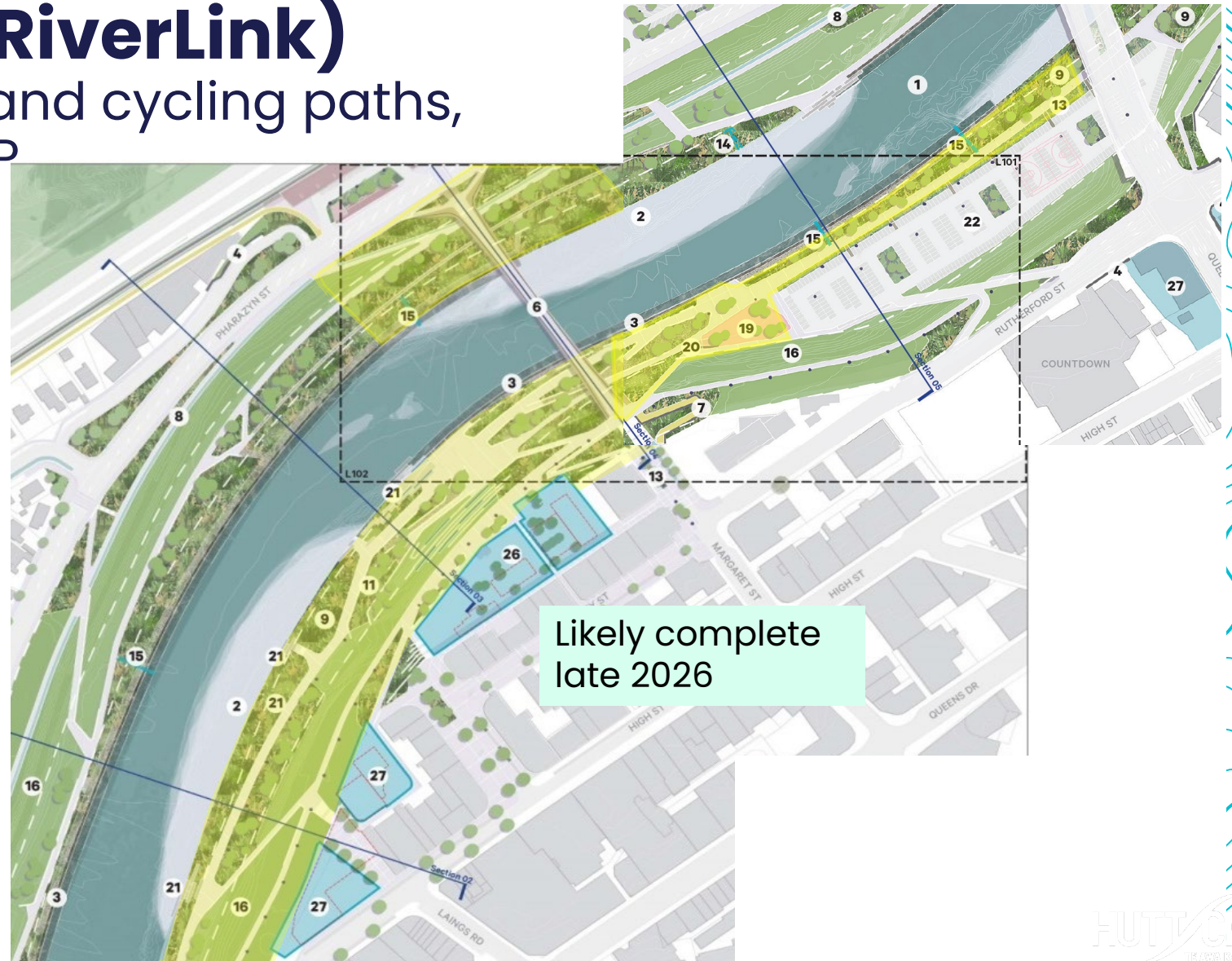
# Te Awa Kairangi (RiverLink)

– Pedestrian cycle bridge identified in 2021 NLTP



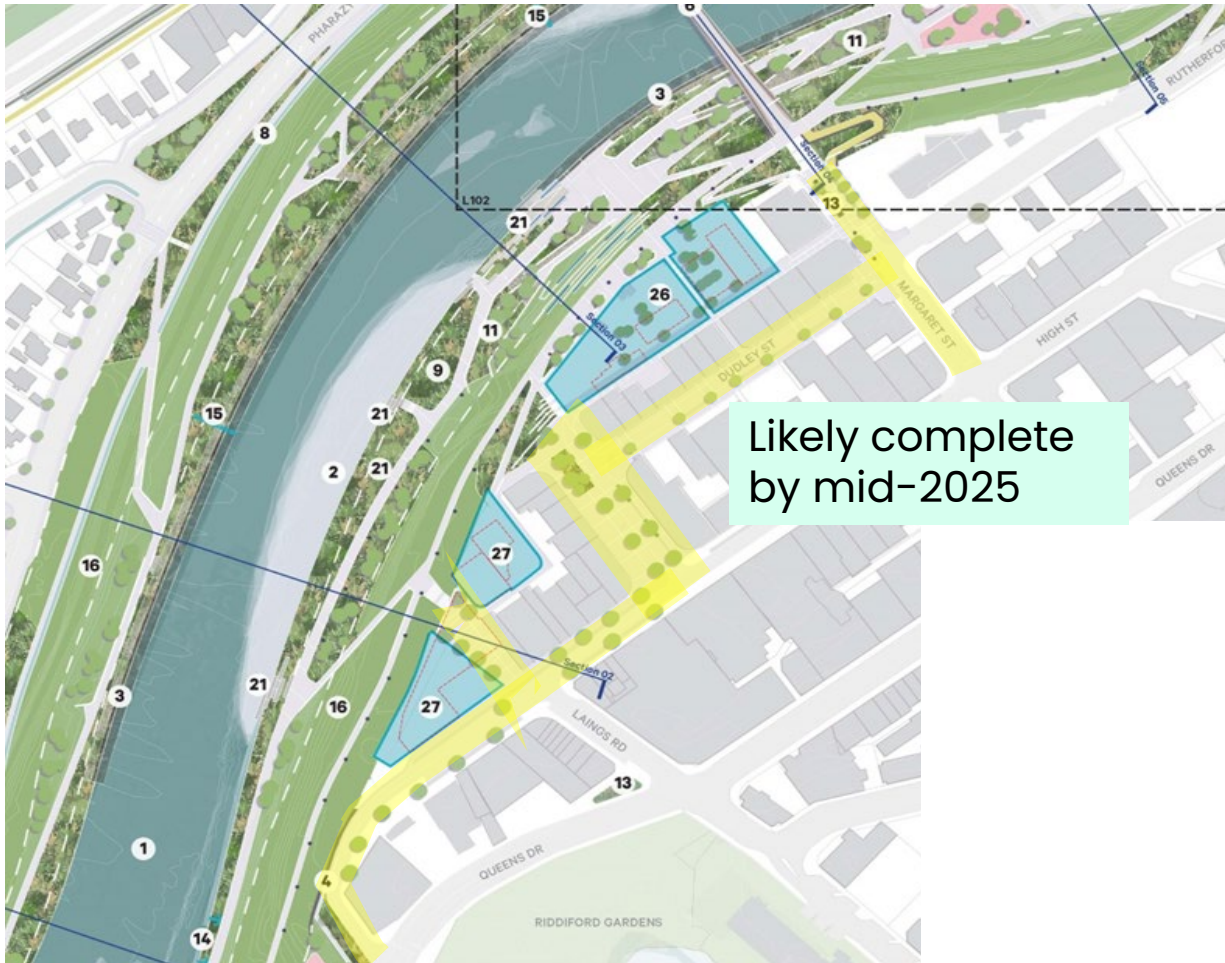
# Te Awa Kairangi (RiverLink)

– River corridor walking and cycling paths, not identified in 2021 NLTP



# Te Awa Kairangi (RiverLink)

– Central city street improvements, not identified in 2021 NLTP



## **Other projects/ Programmes**

- **Speed review –city wide and schools – implementation**
- **Silverstream bridge**
- **Eastern Hutt Road Resilience**
- **Safety Promotion programme**

# Approach for LCLR projects

---

# Low Cost, Low Risk projects –

## Road to zero and Local road improvement (including accessibility)

- Low cost, low risk funded 51% by Waka Kotahi
- Also seeking, in Long Term Plan (LTP) a fund for non-subsidised transport projects.

- **Low cost, low risk**

Illustrative list of different types of Interventions on list.  
(list is over 130 lines)

Road/ Street/ Intersection/Station	Location	Intervention Type
Eastern Hutt Road	Crossing at Pomare Station on Eastern Hutt	Signalised Pedestrian Crossing
Marine Drive	Lowry Bay bus stop. Marine Drive Lowry Bay	Raised Pedestrian Crossing
Knights Road	pedestrian crossing outside farmers entrance.	Walkoff Improvements
Jackson Street	Richmond Street/Jackson Street Ped X Improvements	Reflective Pedestrian Crossing
Whites Line East	Whites Line East the upper part of the road.	Speed Calming
High Street	High Street/ Macky Street Safe Intersection	Intersection Safety Improvements
Normandale Road	Normandale Road Safety Improvements	Road Safety Improvements
Fairway Drive	Fairway Dr Offramp Fairway Dr - Harcourt Werry Dr SNP	Mid-Block Raised Pedestrian Crossing
Seaview Rd	Waione St & Seaview Rd IS SNP	Rural Roundabout Safer Intersection
Petone Station	Petone Station	Station Accessibility Improvements
Kings Cr	Kings Cr & Epuni IS SNP	Urban Priority Intersection Upgrade